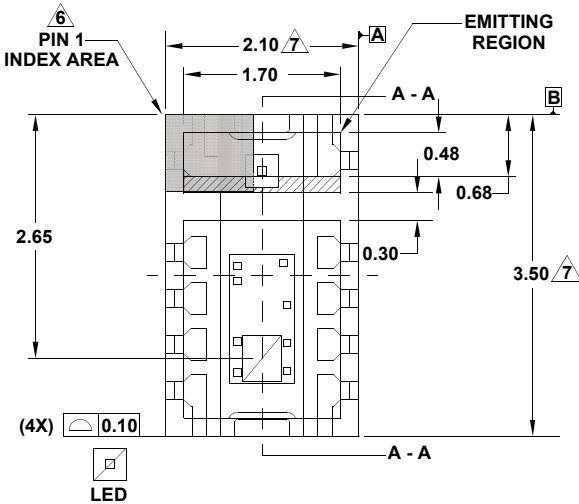


## Package Outline Drawing

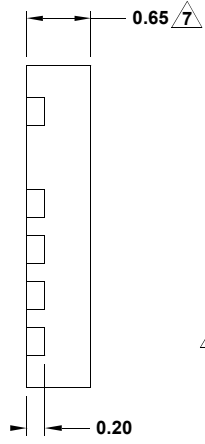
L10.2.1X3.5B

10 LEAD OPTICAL CO-PACKAGE

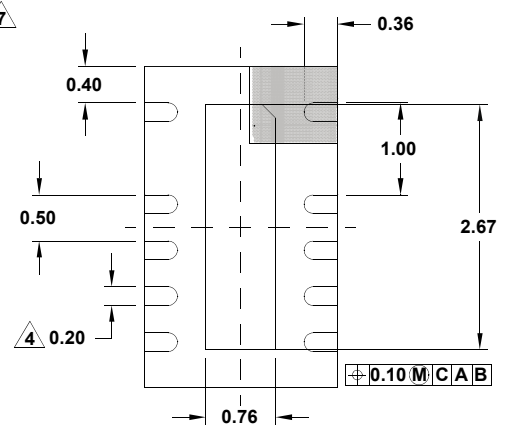
Rev 2, 4/15



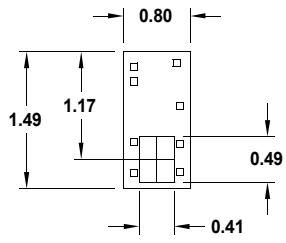
**TOP VIEW**



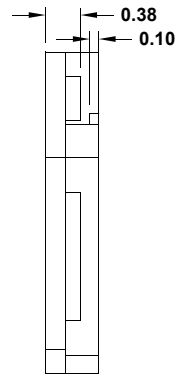
**SIDE VIEW**



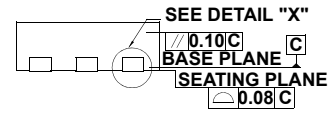
**BOTTOM VIEW**



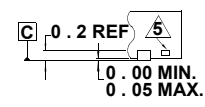
**DETECTOR DIMENSION**



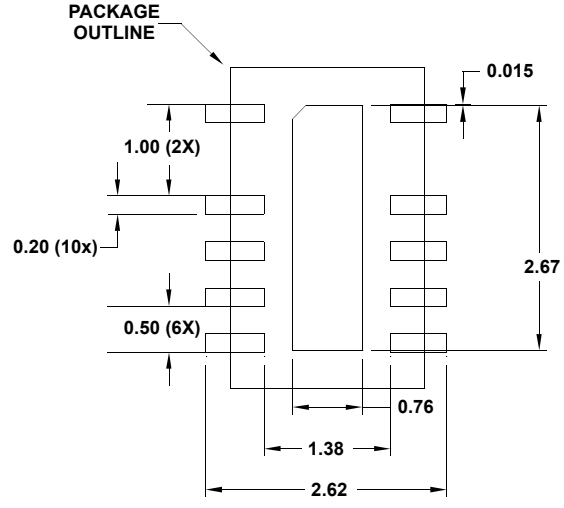
**A-A SECTION**



**SIDE VIEW**



**DETAIL "X"**



**TYPICAL RECOMMENDED LAND PATTERN**

**NOTES:**

1. Dimensions are in millimeters.  
Dimensions in ( ) for Reference Only.
2. Dimensioning and tolerancing conform to ASME Y14.5m-1994.
3. Unless otherwise specified, tolerance : Decimal  $\pm 0.05$
4. Dimension applies to the metallized terminal and is measured between 0.15mm and 0.30mm from the terminal tip.
5. Tiebar shown (if present) is a non-functional feature and may be located on any of the 4 sides (or ends).
6. The configuration of the pin #1 identifier is optional, but must be located within the zone indicated. The pin #1 identifier may be either a mold or mark feature.
7. Dimension tolerance is  $+0.05/-0.05$ .