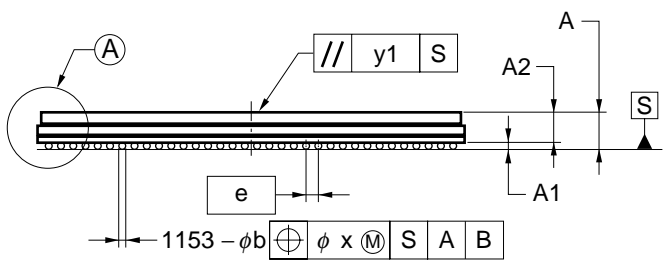
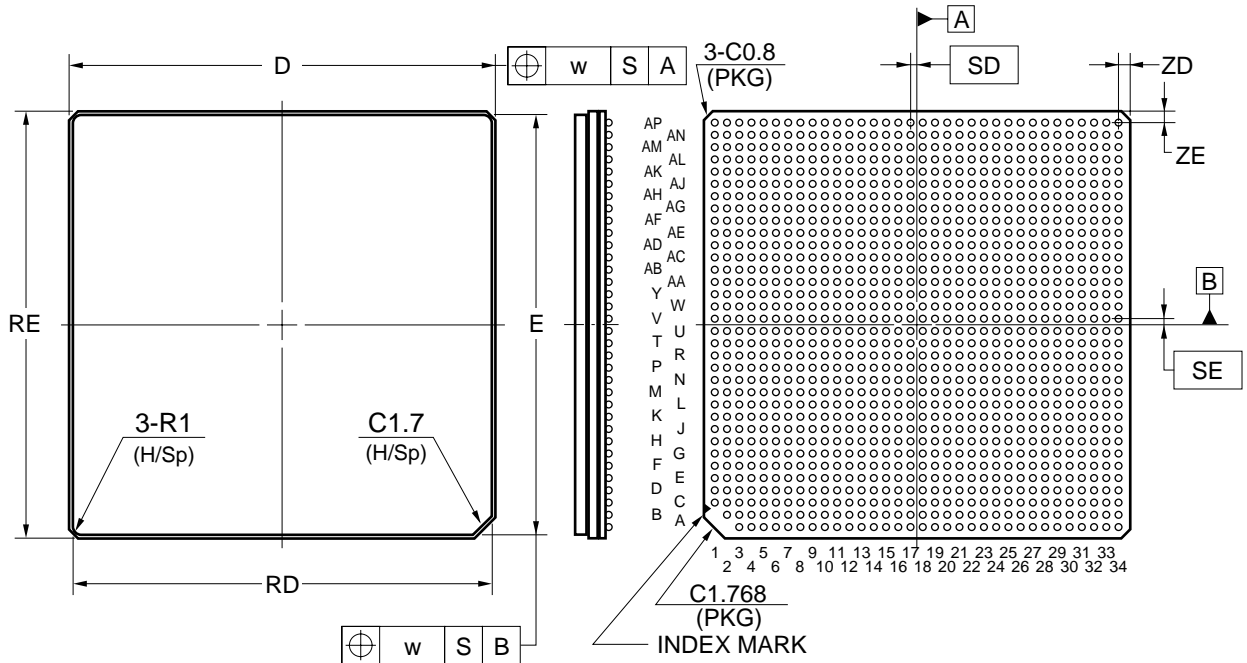
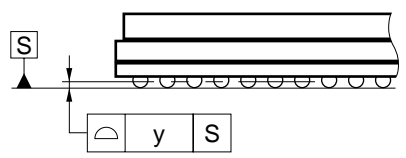


# 1153-PIN PLASTIC BGA (FLIP CHIP TYPE) (35x35)



Detail of (A) part



| ITEM | MILLIMETERS |
|------|-------------|
| D    | 35.00±0.10  |
| RD   | 34.60±0.05  |
| E    | 35.00±0.10  |
| RE   | 34.60±0.05  |
| w    | 0.15        |
| e    | 1.00        |
| SD   | 0.50        |
| SE   | 0.50        |
| A    | 2.86±0.40   |
| A1   | 0.45±0.10   |
| A2   | 2.41        |
| b    | 0.60±0.10   |
| x    | 0.10        |
| y    | 0.15        |
| y1   | 0.35        |
| ZD   | 1.00        |
| ZE   | 1.00        |

P1153F5-100-RN1