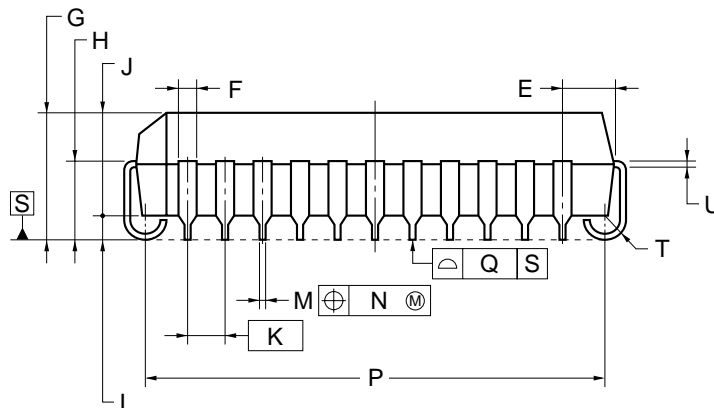
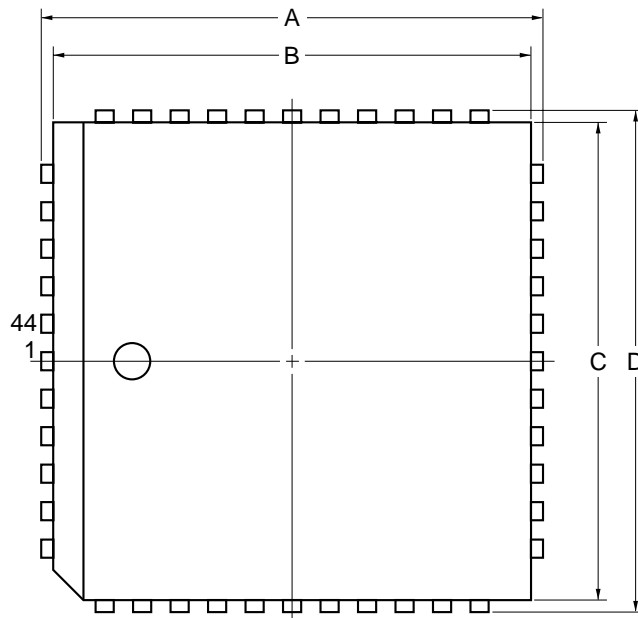


## 44-PIN PLASTIC QFJ (16.58x16.58)



### NOTE

Each lead centerline is located within 0.12 mm of its true position (T.P.) at maximum material condition.

ITEM	MILLIMETERS
A	17.5±0.2
B	16.58±0.1
C	16.58±0.1
D	17.5±0.2
E	1.94±0.15
F	0.6
G	4.4±0.2
H	2.8±0.2
I	0.9 MIN.
J	3.4±0.1
K	1.27 (T.P.)
M	0.42±0.08
N	0.12
P	15.50±0.2
Q	0.15
T	R 0.8
U	0.22 <sup>+0.08</sup> <sub>-0.07</sub>

P44L-50A1-4