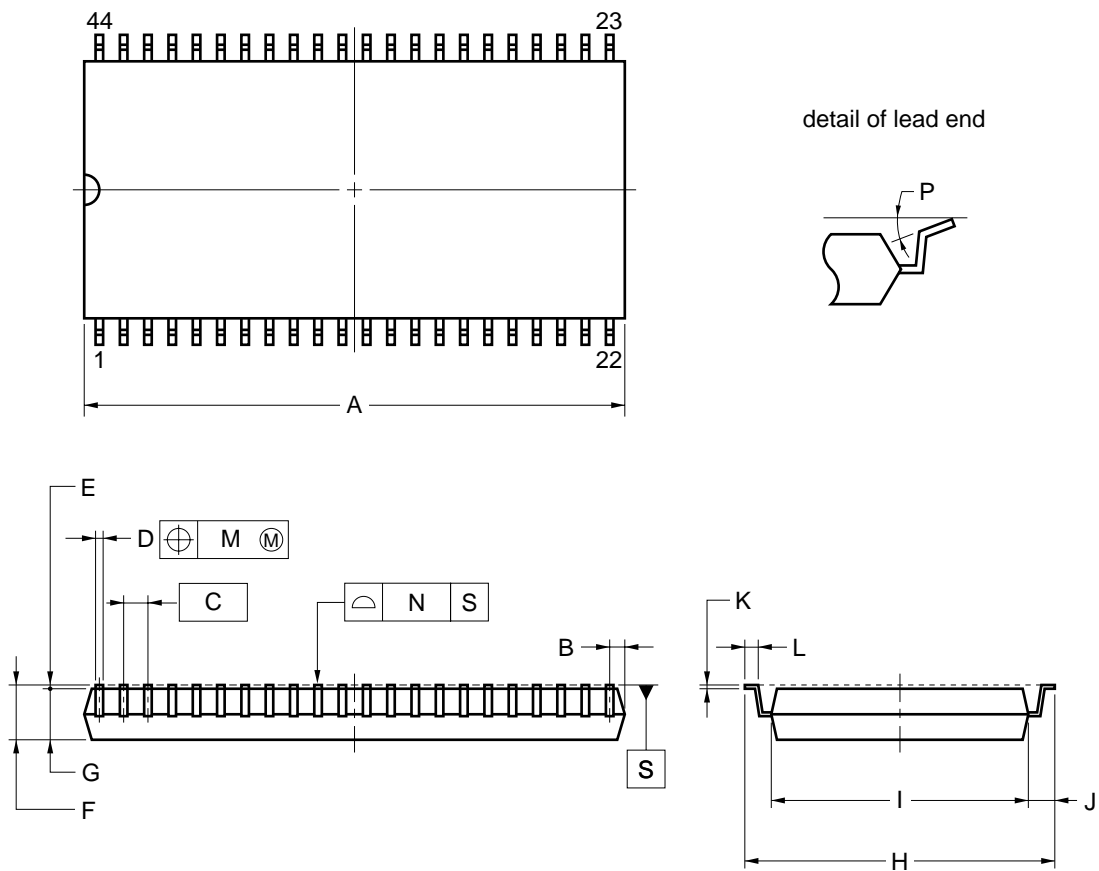


44-PIN PLASTIC SOP (15.24 mm (600))



NOTE

Each lead centerline is located within 0.12 mm of its true position (T.P.) at maximum material condition.

ITEM	MILLIMETERS
A	$27.83^{+0.4}_{-0.05}$
B	0.78 MAX.
C	1.27 (T.P.)
D	$0.42^{+0.08}_{-0.07}$
E	0.15 ± 0.1
F	3.0 MAX.
G	2.7 ± 0.05
H	16.04 ± 0.3
I	13.24 ± 0.1
J	1.4 ± 0.2
K	$0.22^{+0.08}_{-0.07}$
L	0.8 ± 0.2
M	0.12
N	0.10
P	$3^{+7}_{-3}^{\circ}$

P44GX-50-600A1-4