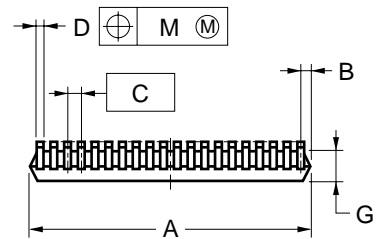
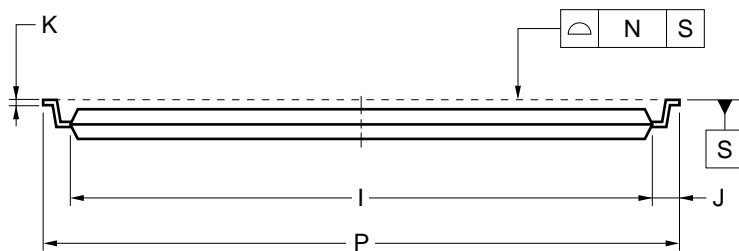
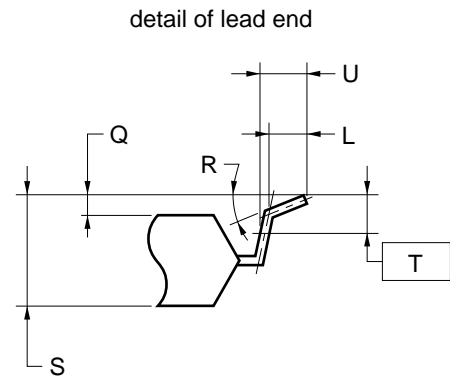
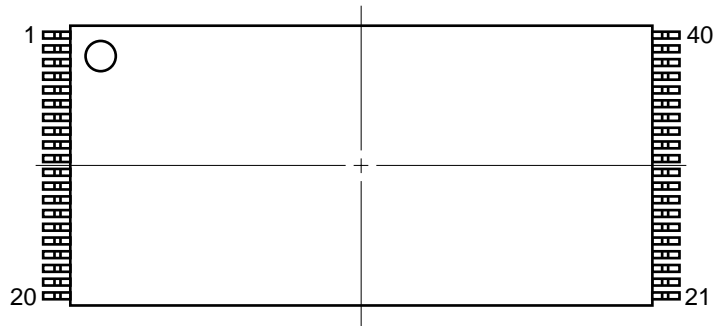


## 40-PIN PLASTIC TSOP(I) (10x20)



### NOTES

- Each lead centerline is located within 0.08 mm of its true position (T.P.) at maximum material condition.
- "A" excludes mold flash. (Includes mold flash : 10.4 mm MAX.)

ITEM	MILLIMETERS
A	10.0±0.1
B	0.45 MAX.
C	0.5 (T.P.)
D	0.22±0.05
G	0.97±0.05
I	18.4±0.1
J	0.8±0.1
K	0.145±0.05
L	0.5
M	0.10
N	0.10
P	20.0±0.2
Q	0.1±0.05
R	3°+5° -3°
S	1.2 MAX.
T	0.25
U	0.6±0.15

S40GZ-50-LKH1-1