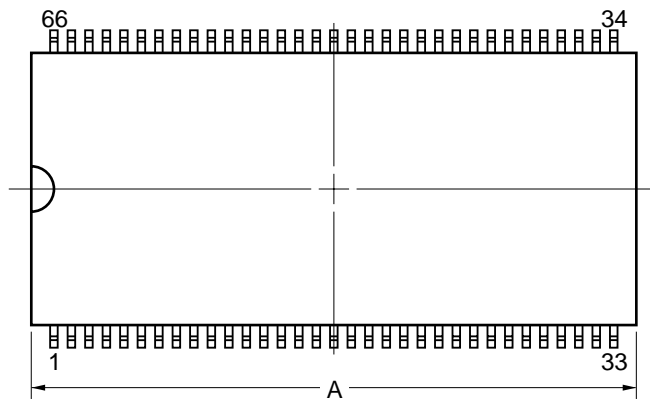
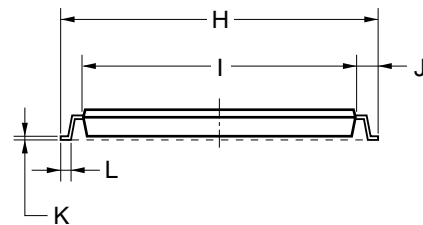
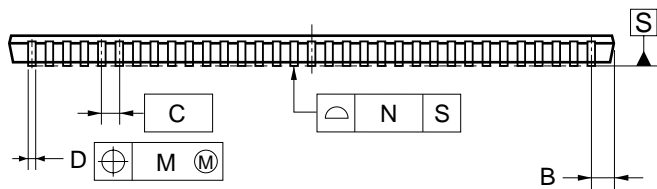
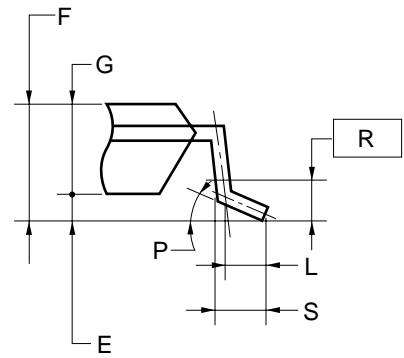


66-PIN PLASTIC TSOP (II) (10.16 mm (400))



detail of lead end



NOTES

1. Each lead centerline is located within 0.12 mm of its true position (T.P.) at maximum material condition.
2. Dimension "A" does not include mold flash, protrusions or gate burrs. Mold flash, protrusions or gate burrs shall not exceed 0.15mm per side.

ITEM	MILLIMETERS
A	22.22±0.05
B	0.865 MAX.
C	0.65 (T.P.)
D	0.24 ^{+0.08} _{-0.07}
E	0.10±0.05
F	1.1±0.1
G	1.00
H	11.76±0.20
I	10.16±0.10
J	0.80±0.2
K	0.145 ^{+0.025} _{-0.015}
L	0.50
M	0.12
N	0.10
P	3° ^{+5°} _{-3°}
R	0.25
S	0.60±0.15

S66G5-65-9LG-1