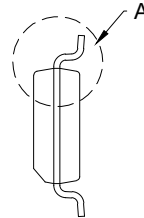
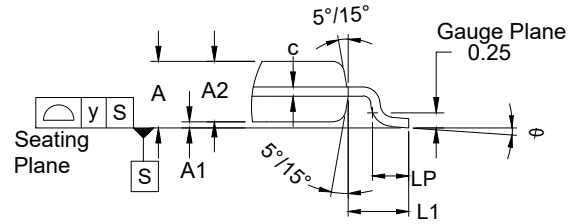


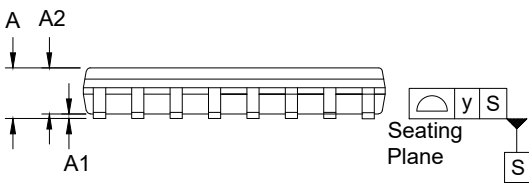
TOP VIEW



SIDE VIEW

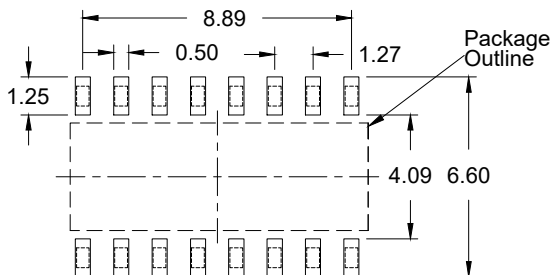


Detail A
(Rotated 90° CW)



SIDE VIEW

Reference Symbol	Dimension in mm		
	Min	Nom	Max
E	3.81	3.90	3.98
A2	1.39	1.47	1.55
HD	9.80	9.90	9.98
HE	5.84	6.00	6.19
A	1.34	1.53	1.72
A1	0.10	0.17	0.25
bp	0.33	0.42	0.51
c	0.19	-	0.24
θ	0.00	-	8.00
e	1.27 BSC		
y	-	-	0.10
LP	0.41	0.65	0.89
L1	-	1.04	-



RECOMMENDED LAND PATTERN
(PCB Top View, SMD Design)

NOTES:

1. JEDEC compatible.
2. All dimensions are in mm and angles are in degrees.
3. Use ± 0.05 mm for the non-toleranced dimensions.
4. Foot length is measured at gauge plane 0.25 mm above seating plane.