

## Quick Start Guide: YROTATE-IT-S5D9

### Document Contents

1.0	Introduction	1
2.0	Board Layout	1
3.0	Initial Board Configuration	2
4.0	PC Graphical User Interface (GUI) Software Installation	3
5.0	Installing USB Drivers	4
6.0	Using the Graphical User Interface (GUI)	5
7.0	Using the wireless communication based on PMOD BLE Module	7
8.0	Additional material	9
9.0	Support	10

### 1.0 Introduction

Welcome to the Renesas Motor Control Synergy S5D9 reference kit!

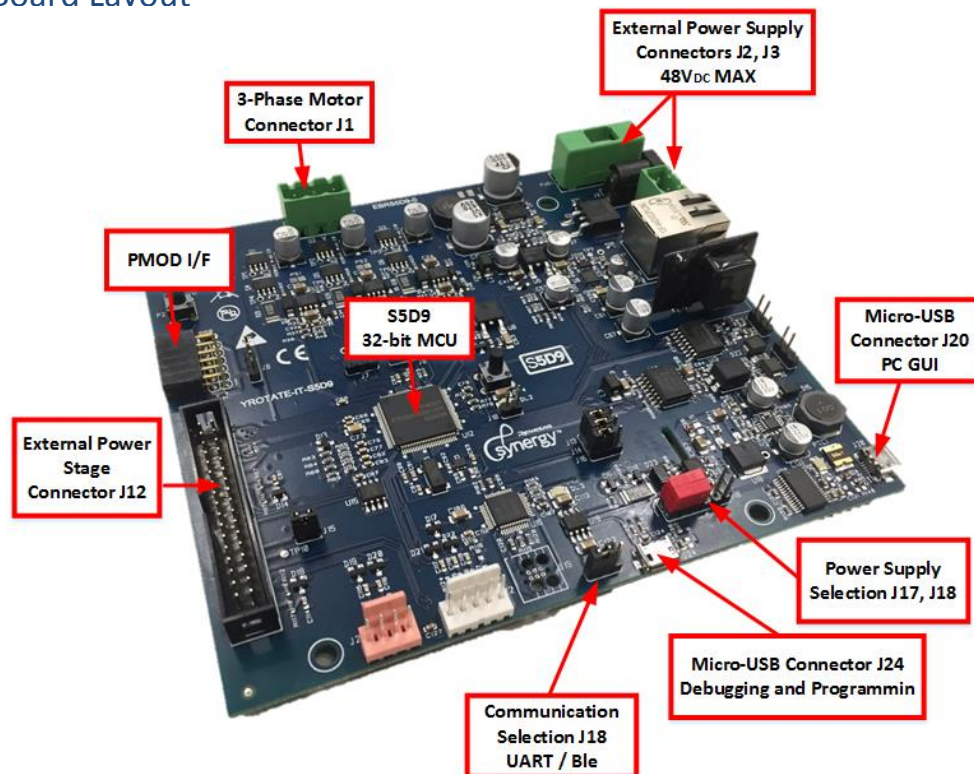
This quick start guide assists the user to connect and use the YROTATE-IT-S5D9 motor control kit for the first time. The S5D9 microcontroller flash memory is pre-programmed with a motor control project. Please check the contents of the kit using the supplied package contents list and notify your supplier if any are missing.

Please be informed that the most updated documents related to the kit must be downloaded on the following website after a quick registration: [www.renesas.eu/motorcontrol](http://www.renesas.eu/motorcontrol)

No CD-ROM nor DVD-ROM are provided in the kit.

**Note: PLEASE DO NOT CONNECT THE BOARD TO THE HOST PC BEFORE INSTRUCTED**

### 2.0 Board Layout



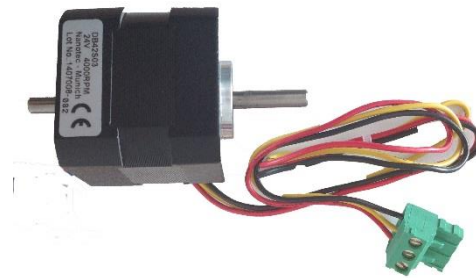
## Quick Start Guide: YROTATE-IT-S5D9

For further board details please refer to the YROTATE-IT-S5D9 User Manual.

### 3.0 Initial Board Configuration

Before connecting the micro-USB cable to the host PC and to the YROTATE-IT-S5D9 board, please follow the setup procedure as described below.

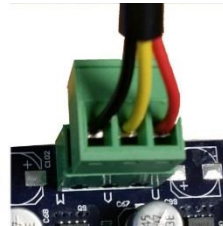
1. The demonstration 3-phase Permanent Magnet Motor (e.g. PMSM) comes pre-wired with its connector as shown below. The box contains a 3-phase Brushless Motor DB42S03 from Nanotec.  
Please refer to the Nanotec website for more details: <http://en.nanotec.com>



2. Place the PMSM motor connector into the assigned motor connector socket **J1** on the YROTATE-IT-S5D9 board.

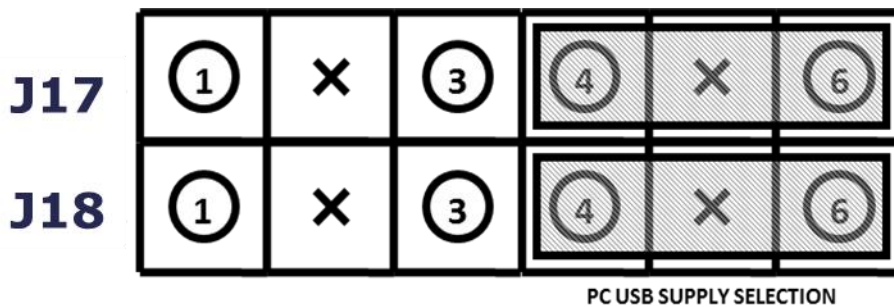
The motor wires are connected as follows

- a. Red Motor wire to “U” connection
- b. Yellow motor wire to the “V” connection
- c. Black motor wire to the “W” connection



3. There are two ways to supply power to the YROTATE-IT-S5D9 board.
  - a. The first is to plug in the USB cable from the PC to supply power directly to the board. In this case the current delivered to the motor is limited by the USB capabilities.
  - b. The second method is to power the board using an external voltage DC source.
 For full details of power supply options please refer to Chapter 3 of the YROTATE-IT-S5D9 User Manual.

4. For initial setup of the YROTATE-IT-S5D9 kit, the first method must be used (USB powered). Ensure that Jumpers **J17** and **J18** are correctly configured as described below.



## Quick Start Guide: YROTATE-IT-S5D9

### 4.0 PC Graphical User Interface (GUI) Software Installation

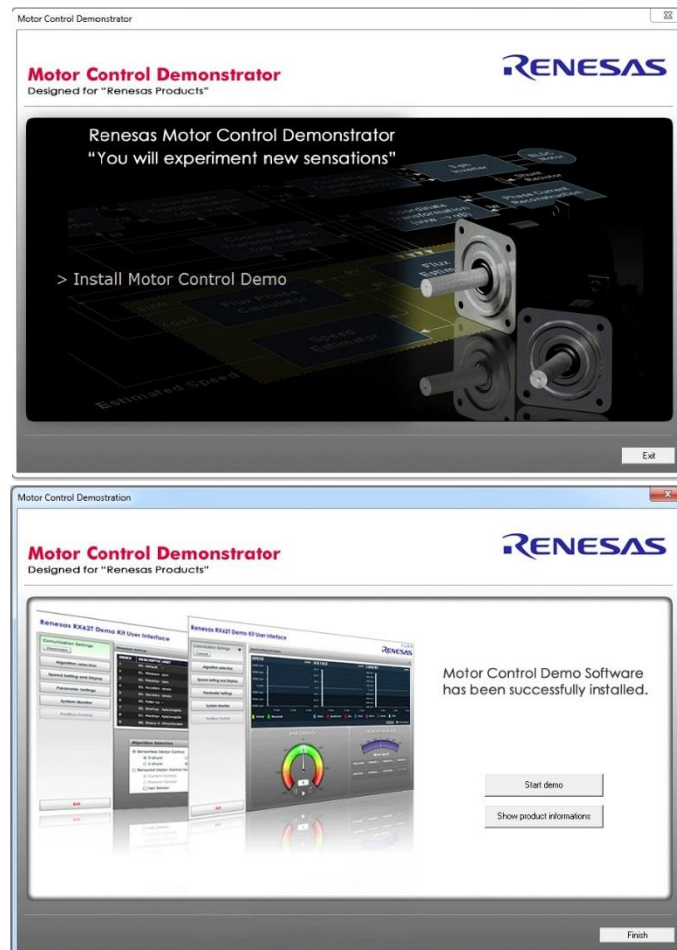
The PC GUI supports the 32-bit and 64-bit operating systems:

- Window 10
- Windows 8.1
- Windows 8

Please download the latest PC GUI software on the website: [www.renesas.eu/motorcontrol](http://www.renesas.eu/motorcontrol) where after registration, the package to download is the zip filename: "YROTATE-IT-S5D9\_PC\_GUI\_XXXXXX.zip"

Windows™ Vista and 7, 8 users must install the software with administration rights. User may see "User Account Control" dialog box. If applicable, enter the administrator password and click <OK>. Else, Right Click on the "MCDemoSetup.x.exe" and select "Run as administrator".

Click on <Install Motor Control Demo> on the installer opening screen and then follow the instructions until reaching the final installer screen and then click <Finish>. At this stage **do not** click on <Start Demo>.



## Quick Start Guide: YROTATE-IT-S5D9

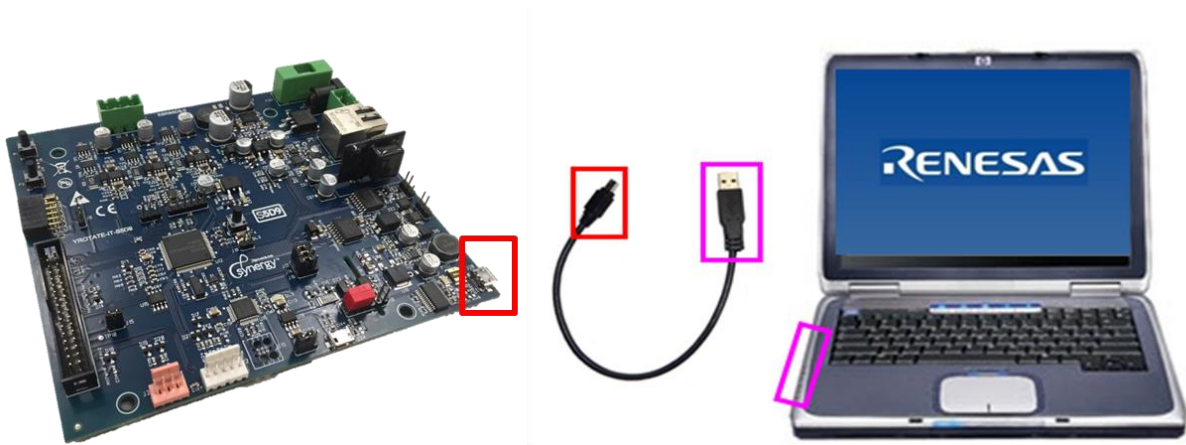
### 5.0 Installing USB Drivers

The virtual UART drivers are included separately in the zip file “YROTATE-IT-S5D9\_PC\_GUI\_XXXXXX.zip”, located in the folder: ./Drivers/

The S5D9 inverter kit is using the FT232R IC from FDTI to convert serial communication to USB. Please refer to the FDTI website to get more information about the device used.

To install the virtual UART drivers of the YROTATE-IT-S5D9, please follow the steps:

1. First, connect the USB cable to the host PC and then connect to the YROTATE-IT-S5D9 board.



2. The host PC will detect the new hardware and start the driver installation. You may have to follow the Windows instructions, selecting **<NOT THIS TIME>** to the request for an automatic driver search by Windows. Then click on **<SELECT A PATH>** to select the appropriate YROTATE-IT-S5D9 drivers in the folder ./Drivers/
3. If the automatic installation fails, the drivers can be manually installed. In the folder ./Drivers/, double click on the file “**CDM v2.12.06 WHQL Certified.exe**” and then follow the installer instructions.
4. When the board is powered up, please check that the LED **DL2** is blinking, indicating that the Microcontroller Synergy S5D9 is working properly.

## Quick Start Guide: YROTATE-IT-S5D9

### 6.0 Using the Graphical User Interface (GUI)

The GUI is installed during the installation process, and must be run with administration rights. To start the GUI Right-click on the Motor Control Demo Icon in the start menu or on the desktop and **“Run as administrator”**

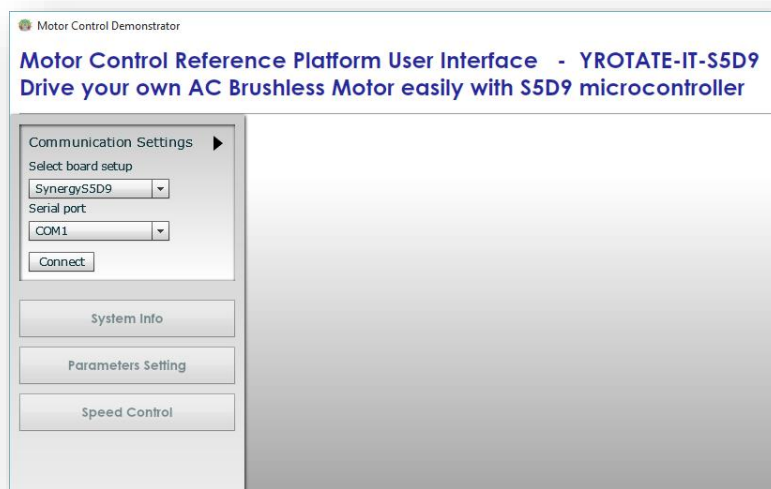


Please note, that for Windows Vista and Windows 7, 8 users, the GUI must be run with administration rights. To automatically set the admin privilege, press the right mouse button over the icon of the GUI, Select **“Properties”**, press the Left mouse button on the **“Compatibility”** tab and Select the Checkbox **“Run this program as an administrator”** under the Privilege Level, and click **<OK>**.

It is recommended that the USB cable should be connected to the PC and the board before opening the GUI as this makes the connection process easier. The GUI can be opened without the board being connected.

Once the GUI is open use the following procedure to connect the GUI to the YROTATE-IT-S5D9 board.

- Select the **“Select board setup”** drop down menu bar in the **“Communication Settings”** box in the top left hand corner of the GUI panel.
- Select the **<SynergyS5D9>** option.
- Select the **“Serial port”** drop down box.
- Select the communications port connected to the YROTATE-IT-S5D9 board (in this example COM1)
- Click on the **<Connect>** button.

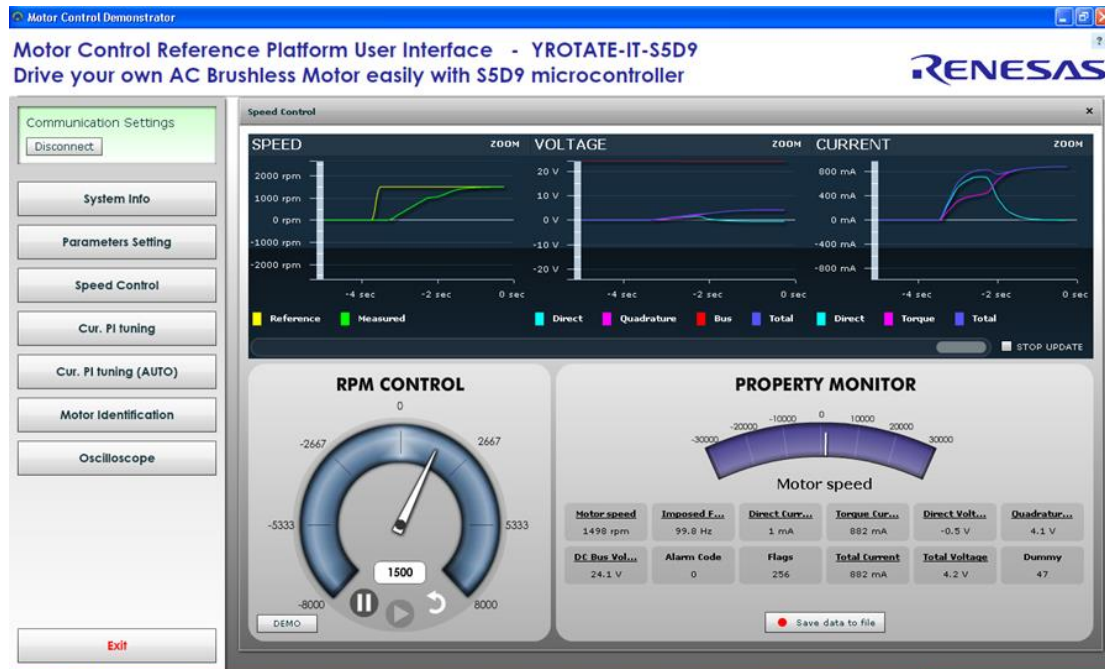


Once connected the GUI can be used to control the motor manually using the **“RPM Control”** facility. Here the user can start, stop and set direction and speed of the motor, whilst observing its performance parameters within the system display windows of the GUI.

## Quick Start Guide: YROTATE-IT-S5D9

The GUI can be closed by either clicking on the <Exit> button in the bottom left hand corner or the usual windows close button.

All the facilities of the GUI, including the unique Auto-calibration feature are described in the YROTATE-IT-S5D9 User Manual, which can be downloaded on the website: [www.renesas.eu/motorcontrol](http://www.renesas.eu/motorcontrol)



### Speed range limitations

The YROTATE-IT-S5D9 kit is able to drive diverse 3-phase Permanent Magnet Motors by using the sensorless vector control algorithm within the given electrical specification of the system.

A **minimum** speed exists which is mandatory to reach in order to run the motor properly using the three shunts current measurement methods.

When the power is powered by the USB supplied by a laptop, the maximum current delivered to the board is **500mA** with a total phase current limited to **300mA** at 12Vdc Voltage.

That's why, when **NO** external power supply is connected the minimum of the delivered Nanotec Motor DB42S03 is **300 RPM**, and the maximum speed is **2500RPM**.

The current throughout the three shunts at slower rotational speed than 300 RPM is too low by using the USB power supply configuration and cannot be used for the rotor estimation within the control algorithm.

Higher Voltage up to 24Vdc and current up to 1A can be supplied to the Board externally by changing the settings of the Jumper J17 and J18, like described in the "Chapter 3.0 Initial Board Configuration".

The maximum load free rotational speed of the Nanotec motor is up to **6000RPM**.

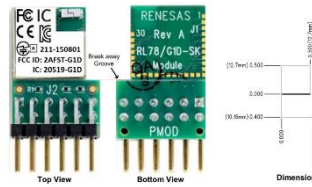
The motor can reach higher speed up to **8000RPM**, using the implemented flux weakening technic within the control algorithm and higher current.

## Quick Start Guide: YROTATE-IT-S5D9

### 7.0 Using the wireless communication based on PMOD BLE Module

The wireless communication based on the Blue Tooth low energy BLE technology requires following steps beforehand:

1. Make please sure, to have the PMOD module RL78/G1D available. For further information, please check the following link: <https://www.renesas.com/en-eu/solutions/proposal/bluetooth-low-energy.html>

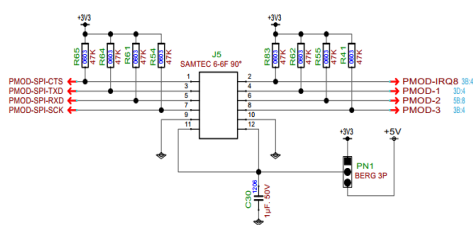
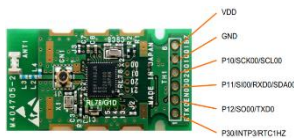


2. Alternatively, the RL78/G1D Evaluation board can be used to establish the usage of the BLE wireless communication. More information can be found under:

<https://www.renesas.com/en-eu/solutions/proposal/bluetooth-low-energy.html>



The preparation of the module contained in the evaluation board package, can be prepared hardware wise for the PMOD I/F available on the S5D9 YROTATET-IT Kit as follows:



Pin	Ble Module	S5D9 PMOD I/F	Connection
1	P30/INTP3/RTC1HZ	SPI-CTS	Unused
2	P12/So00/TxD0	IRQ8	2 → 5
3	P11/SI00/RxD0/SDA00	TxD0	3 → 3
4	P10/SCK00/SCL00	PMOD-1	Unused
5	GND	RxD0	5 → 10
6	VDD	PMOD-2	6 → 11
7	-	SPI-SCK	-
8	-	PMOD-3	-
9	-	GND	-
10	-	GND	-
11	-	VDD	-
12	-	VDD	-

After building up the required hardware connections, before plug in the BLE module, programming the same shall be executed. The programming of the BLE module can be executed with the RFP kit. For further information, please have look into the User's Manual of the BLE Evaluation board.

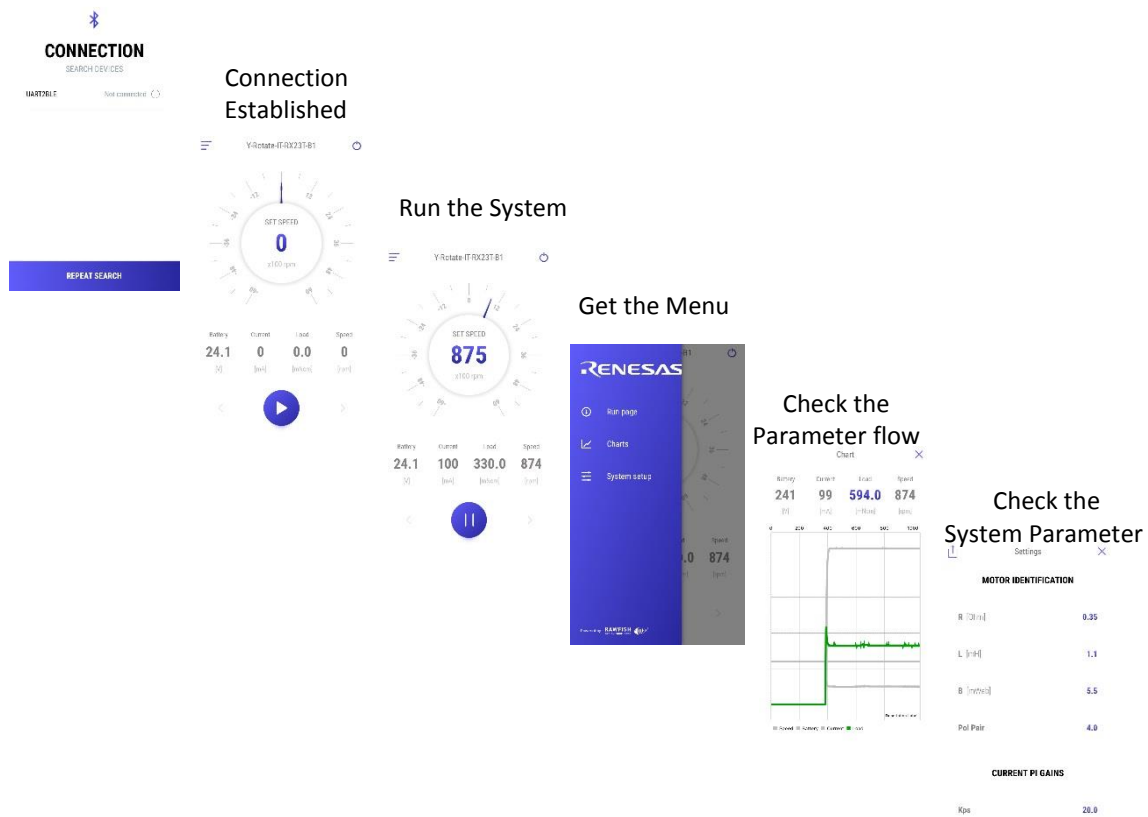
3. Now the next step is to program the YROTATE-IT-S5D9 Board with the appropriate software "S5D9 ESP\_SSP140\_L\_BLE\_20180618" available to be downloaded at: <https://www.renesas.com/en-eu/solutions/key-technology/motor-control/s5d9.html>. Compiling and programming can be executed by using the E2Studio.

## Quick Start Guide: YROTATE-IT-S5D9

4. The last Step is now to download and install the smart APP: *YROTATE-IT* on the APP STORE for iOS based devices or Google Play for Android based devices accordingly.



Before starting the power supply of the YROTATE-IT-S5D9 Board, please check the position of the J18 for the selection of the internal data exchange communication between the UART or BLE module. Set the J18 to pos. 1-2 for BLE communication selection. Having done that, now power on the YROTATE-IT-S5D9 Kit and start the YROTATE-IT APP. The first action on the smart phone is to start the search of the external device. In this case the YROTATE-IT-S5D9 kit. The searching process has been finished when UART2BLE has been found. The integrated user executional steps within the smart app are as follows:





## Quick Start Guide: YROTATE-IT-S5D9

### 8.0 Additional material

After you have completed this quick start procedure, please review documentation that is available on the webpage [www.renesas.eu/motorcontrol](http://www.renesas.eu/motorcontrol)

The Website contents is the following:

Items	Description of Resources
<b>Auto-tuning Video-Tutorial</b>	Short video explaining how to easily tune any Brushless AC motor in 45 seconds using just the intuitive PC Graphical User Interface
<b>YROTATE-IT-S5D9_PC_GUI_XXXXXX.exe</b>	PC GUI installer package including the drivers and readme file
<b>Embedded Software</b> e <sup>2</sup> Studio Source Code	Source files for code flashed by default into the Renesas S5D9 microcontroller available under e2studio. The software source code delivered is Royalty-Free.
<b>Manuals</b> Kit Motor Specifications Renesas Parts Datasheets Tuned Motors Specifications	Relevant documentation for the kit, the 3-phase motor, the S5D9 microcontroller, the Renesas Analog Parts and the motors tuned.
<b>Schematics-Gerber-BoM</b> External Power Stages Main low voltage inverter Board	Schematics, Gerber files (Design files, CAD), Bill of Materials for both the main kit and the external power stages (not included as part of the kit)



## Quick Start Guide: YROTATE-IT-S5D9

### 9.0 Support

Online technical support and further information is available at the following locations

#### Motor Control Websites

Europe: [www.renesas.eu/motorcontrol](http://www.renesas.eu/motorcontrol)  
America: [www.am.renesas.com/motorcontrol](http://www.am.renesas.com/motorcontrol)  
Japan: [www.renesas.com/motorcontrol](http://www.renesas.com/motorcontrol)

#### General Web Resources

RenesasRulz Forum [www.renesasrulz.com](http://www.renesasrulz.com)  
Renesas Interactive Training [www.renesasinteractive.com](http://www.renesasinteractive.com)  
Renesas YouTube Channel [www.youtube.com/user/RenesasPresents](http://www.youtube.com/user/RenesasPresents)  
Renesas Europe on Facebook [www.facebook.com/RenesasEurope](http://www.facebook.com/RenesasEurope)  
Renesas Europe on Twitter [www.twitter.com/Renesas\\_Europe](http://www.twitter.com/Renesas_Europe)

©2017 Renesas Electronics Europe GmbH. All rights reserved  
©2017 Renesas Electronics Corporation. All rights reserved  
©2017 Renesas Electronics Solution Corp Ltd. All rights reserved