

# Smart Speaker LED Indication with GreenPAK SLG46880V

## Contents

1. References.....	1
2. Terms and Definitions .....	1
3. Introduction .....	2
4. Operation of the Smart Speaker LED Indicator. ....	2
5. Development of a test sample of the LED indicator.....	13
6. Conclusions .....	16
7. Revision History .....	17

## 1. References

For related documents and software, please visit:

<https://www.renesas.com/eu/en/products/programmable-mixed-signal-asic-ip-products/greenpak-programmable-mixed-signal-products/other-greenpaks/slg46880-greenpak-programmable-mixed-signal-matrix>

Download our free GreenPAK Designer software [1] to open the .gp files [2] and view the proposed circuit design. Use the GreenPAK development tools [3] to freeze the design into your own customized IC in a matter of minutes. Find out more in a complete library of application notes [4] featuring design examples as well as explanations of features and blocks within the GreenPAK IC.

- [1] [GreenPAK Designer Software](#), Software Download and User Guide
- [2] [AN-CM-361 Smart speaker LED Indication with GreenPAK.gp](#), GreenPAK Design File
- [3] [GreenPAK Development Tools](#), GreenPAK Development Tools Webpage
- [4] [GreenPAK Application Notes](#), GreenPAK Application Notes Webpage
- [5] SLG46880V Datasheet
- [6] Video <https://www.renesas.com/us/en/video/smart-speaker-led-indication-greenpak>

Author: Rostyslav Marushchak

## 2. Terms and Definitions

ASM	Asynchronous State Machine
DM	Dynamic Memory macrocell
I2C	Inter-integrated circuit (bus)
LED	Light-emitting diode
PCB	Printed circuit board
PWM	Pulse Width Modulator

### 3. Introduction

As Smart devices are becoming more popular with users and the demand for them will only grow, we developed a LED display Smart speaker with I2C control using a typical GreenPAK design. This design allows the switching of dynamic LED indicator in the smart device depending on its modes: Standby (idle) mode, Listening mode, Thinking mode, Responding mode, Meeting mode, and an indication of on/off mics of the device. Mode switching is implemented by I2C commands, by overwriting only one register.

### 4. Operation of the Smart Speaker LED Indicator

In this application note, GreenPAK IC (SLG46880) with eight white LEDs, eight blue LEDs, one green LED, one red LED and 12 states ASM (Figure 1, Figure 2) were used.

Smart speaker LED indication

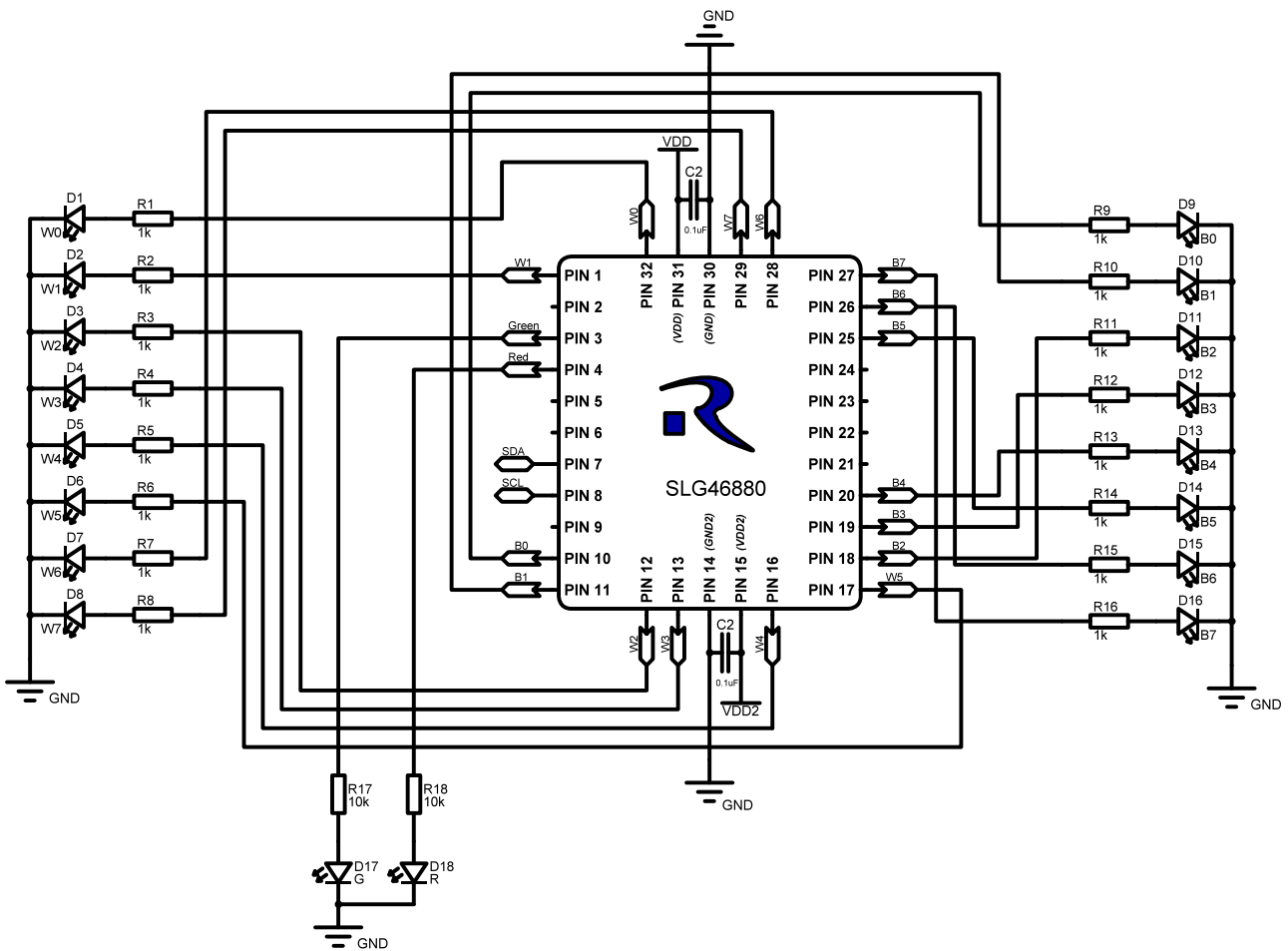


Figure 1: Application Circuit

- D1...D8 → White LEDs
- D9...D16 → Blue LEDs
- D17 → Green LED
- D18 → Red LED

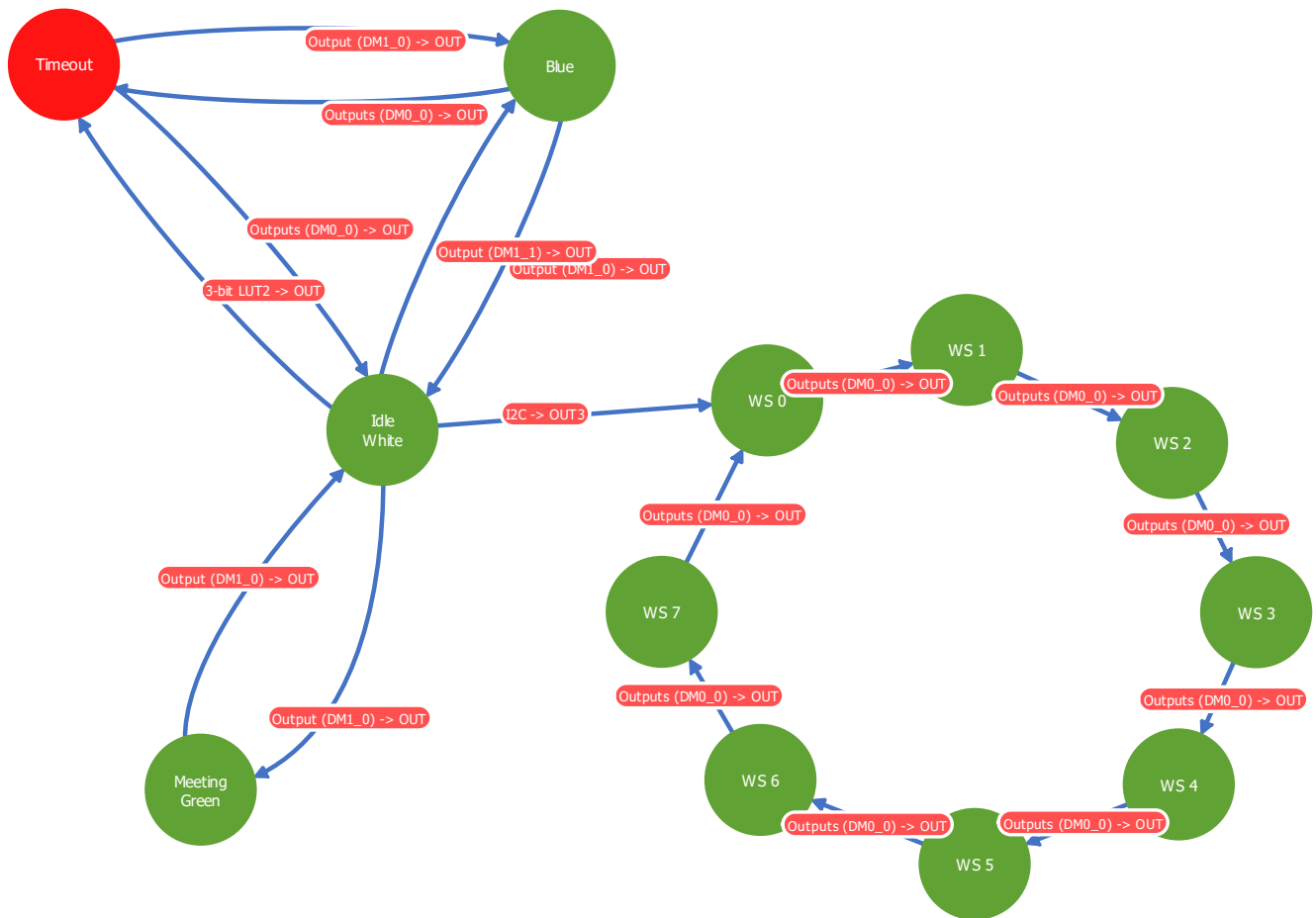


Figure 2: States of ASM of LED Indicator

The condition of output PINs #32(W0), #1(W1), #12(W2), #13(W3), #16(W4), #17(W5), #28(W6), #29(W7) is determined by the state of ASM outputs ASM OUTPUT1 (see Figure 4), the condition of output PINs #10(B0), #11(B1), #18(B2), #19(B3) is determined by the state of ASM outputs ASM OUTPUT0 (see Figure 3). The condition of output PINs #20(B4), #25(B5), #26(B6), #27(B7), and #4(Red) is determined by the State Dependent Items - the DM (Dynamic Memory) macrocells and the F(1) Computation Macrocell. The condition of the PIN#3 (Green) is determined by the I2C Virtual OUT1.

Each DM macrocell can use up to 6 configurations, and each F(1) Computation Macrocell can use up to 4 configurations.

The following was used for the design work:

- DM0\_0 - 4 configurations (Worm 0, Zero, BB, Red);
- DM0\_1 - 2 configurations (S7\_B7, 0);
- DM1\_0 - 4 configurations (To a miting, To idle, Blue, White);
- DM1\_1 - 1 configuration (WBB);
- F(1) - 4 configurations (000\_111, S5\_B5, S6\_B6, S4\_B4, None);

For more details about DM (Dynamic Memory) macrocells work and the F(1) Computation Macrocell work see section 4.2.

## 4.1 Smart Speaker Modes Description

### Idle

The device is idle and waiting for the user's command. White LEDs are on.

### Listening

In this mode, device is woken up through a wake word and is listening to the user command. All blue LEDs are breathing.

### Thinking

In this mode Smart speaker is thinking about the command given by a user. Halfway filled out LEDs like a worm chasing its tail and rotating in circles. Head of the worm is blue, and tail is white.

### Responding

In this mode device is talking to the user. All LEDs lit up alternating between blue and white, fading in and out to appear breathing.

### Meeting Mode

In this mode, the user can use the device for conducting audio/video conferences and meetings. The green LED lights up. When the mics are turned off, the red LED lights up additionally.

## 4.2 Description of the ASM states of LED Indicator

The operation of the LED indicator is determined by the state of the I2C virtual inputs (Table 1. I2C register control data).

Table 1. I2C Register Control Data

Address Byte	Register Bit	Block	Function
0x1DB	reg<3800>	Virtual Input <0>	Mics muted (1)/Mics unmuted (0). Default is 0.
	reg<3801>	Virtual Input <1>	Meeting on (1)/Meeting off (0). Default is 0.
	reg<3802>	Virtual Input <2>	Listening (1)/Responding (0). Default is 0.
	reg<3803>	Virtual Input <3>	Thinking on (1)/ Thinking off (0). Default is 0.
	reg<3804>	Virtual Input <4>	Not used
	reg<3805>	Virtual Input <5>	Not used
	reg<3806>	Virtual Input <6>	Stop PWM (1)/Start PWM (0). Default is 1.
	reg<3807>	Virtual Input <7>	Timeout (ASM Reset) by changing the state of the register. Default is 0.

Mode switching is implemented by I2C commands, by overwriting of [0x1DB] register (I2C virtual inputs).

#### I2C Mode Commands:

- [start] [0x09] [w] [0xDB] [0x84] [stop] // Listening
- [start] [0x09] [w] [0xDB] [0x48] [stop] // Thinking (or the next command)
- [start] [0x09] [w] [0xDB] [0x40] [stop] // Timeout to Idle
- [start] [0x09] [w] [0xDB] [0x80] [stop] // Responding
- [start] [0x09] [w] [0xDB] [0x40] [stop] // Timeout to Idle
- [start] [0x09] [w] [0xDB] [0x41] [stop] // Idle (Mics muted)

- 7. [start] [0x09] [w] [0xDB] [0x43] [stop] // Meeting (Mics muted)
- 8. [start] [0x09] [w] [0xDB] [0x42] [stop] // Meeting

Each mode of operation of the LED indicator can use one or several ASM states (Figure 2).

The condition of the output PINs is determined by the ASM OUTPUT0 and ASM OUTPUT1 accordingly to each state of ASM (Figure 3, Figure 4).

ASM OUTPUT0				
RAM	Pin names			
<b>Connection Matrix Output RAM:</b>				
	3	2	1	0
ST0	0	0	0	1
ST1	0	0	1	0
ST2	0	1	0	0
ST3	1	0	0	0
ST4	0	0	0	0
ST5	0	0	0	0
ST6	0	0	0	0
ST7	0	0	0	0
ST8	0	0	0	0
ST9	0	0	0	0
ST10	1	1	1	1
ST11	0	0	0	0

Bulk operations

All to 0

Figure 3: ASM OUTPUT0

ASM OUTPUT1								
<b>GPOs Output RAM:</b>								
	7	6	5	4	3	2	1	0
ST0	1	1	1	0	0	0	0	0
ST1	1	1	0	0	0	0	0	1
ST2	1	0	0	0	0	0	1	1
ST3	0	0	0	0	0	1	1	1
ST4	0	0	0	0	1	1	1	0
ST5	0	0	0	1	1	1	0	0
ST6	0	0	1	1	1	0	0	0
ST7	0	1	1	1	0	0	0	0
ST8	0	0	0	0	0	0	0	0
ST9	1	1	1	1	1	1	1	1
ST10	0	0	0	0	0	0	0	0
ST11	0	0	0	0	0	0	0	0

Bulk operations

All to 0

Figure 4: ASM OUTPUT1

**Timeout state** (Figure 5)

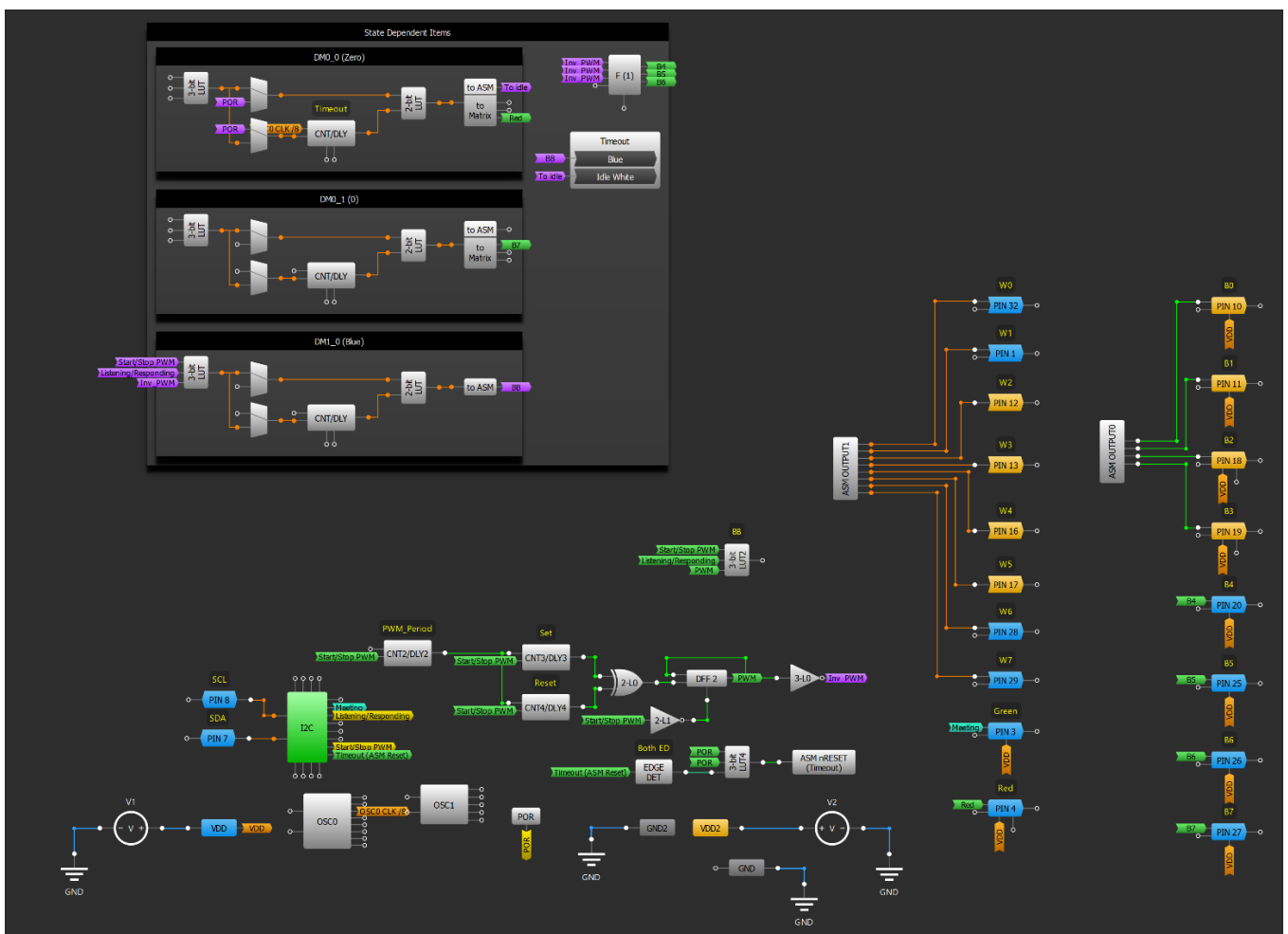
This state used the State Dependent Items with the next configurations: DM0\_0 (Zero), DM0\_1 (0), DM1\_0 (Blue), and F(1) (000\_111).

The DM0\_0 (Zero) configuration is used only in the **Timeout state** for the timeout counting and transition to the **Idle White** state after that.

The DM0\_1 (0) configuration is used for holding on LOW level signal on PIN#27 (B7). This configuration is used in all ASM states except **WS7** and **Blue** states. In these states, the DM0\_1 (S7\_B7) configuration is used.

The DM1\_0 (Blue) configuration is used in the **Timeout state** for realizing the **Listening mode** with breathing blue LEDs.

The F(1) (000\_111) configuration sends inverted PWM signal to the output PINs #20(B4), #25(B5), and #26(B6).



**Figure 5: Timeout State**

After the chip initialization and POR signal, the ASM is in the initial **Timeout state** until the end of the Timeout rising delay (121 ms) DM0\_0 (Zero). No one LED lights up, PWM is stopped. After that, if the ASM does not receives any I2C command, it goes into the **Idle White** state.

The **Timeout state** is also used in the **Listening mode** with breathing blue LEDs. Within **Listening mode**, PWM by using DM1\_0 (Blue) in the **Timeout state**, and by using DM0\_0 (BB) in the **Blue state**, alternately switches ASM from the **Timeout state** to the **Blue state** and back.

Idle White state (Figure 6)

In the Idle White state, all white LEDs are on (see Figure 3 and Figure 4, and Figure 6), PWM is stopped, and the ASM waiting for the next I2C command.

This state used the State Dependent Items with the next configurations: DM0\_0 (Red), DM0\_1 (0), DM1\_0 (To a mting), DM1\_1 (WBB), and F(1) (000\_111).

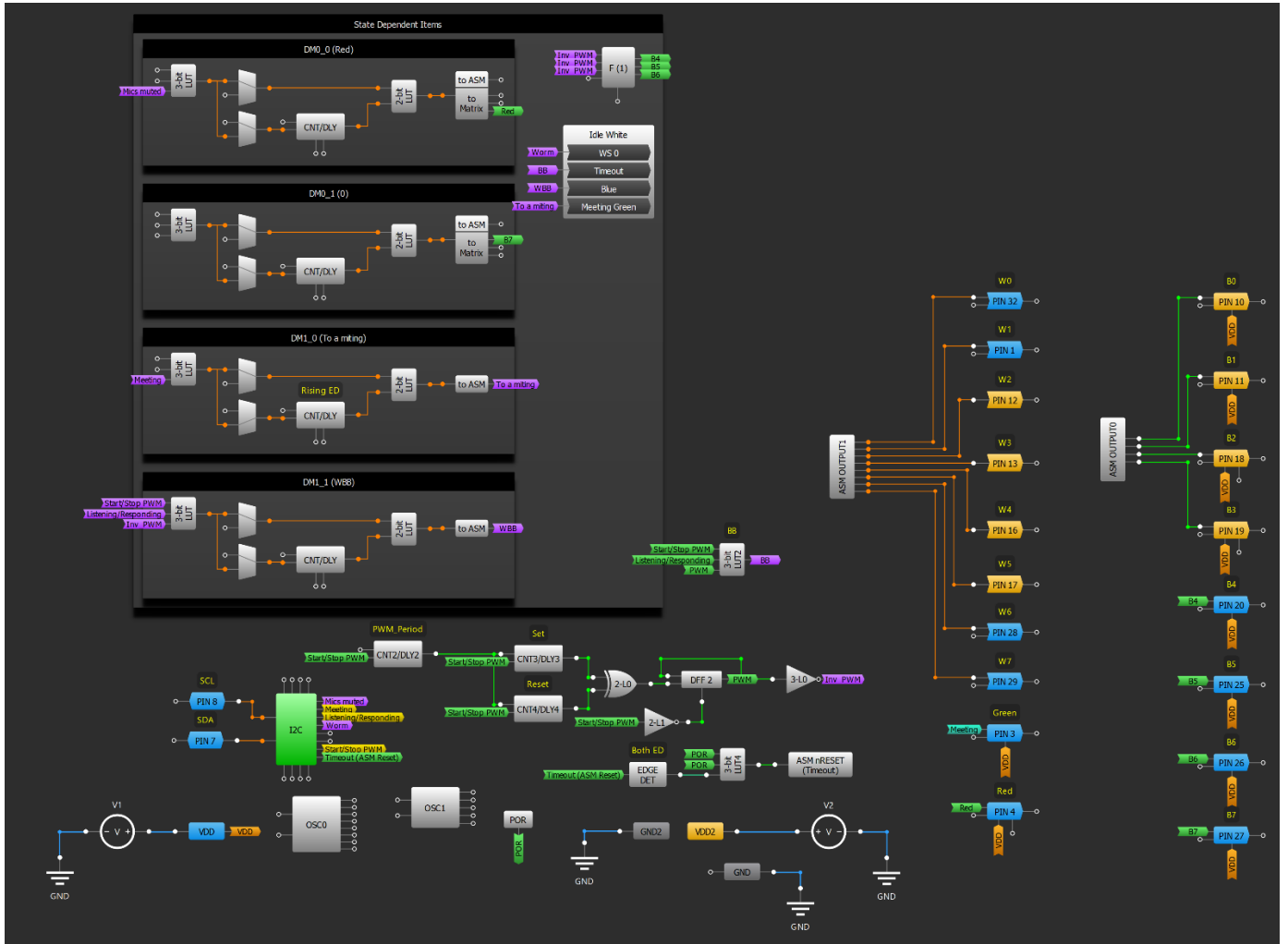


Figure 6: Idle White State

**Blue State** (Figure 7)

In this state, all blue LEDs are on. Blue state is used to implement **Listening mode** and **Responding mode**. For the operation of the LED indicator in **Listening mode**, use the I2C command "Listening", the PWM module is turned on, which alternately switches the **Blue state** and the **Timeout state**. In this way, we achieve the Blue Breathing effect (See Figure 8).

This state used the State Dependent Items with the next configurations: DM0\_0 (BB), DM0\_1 (S7\_B7), DM1\_0 (White), and F(1) (000\_111).

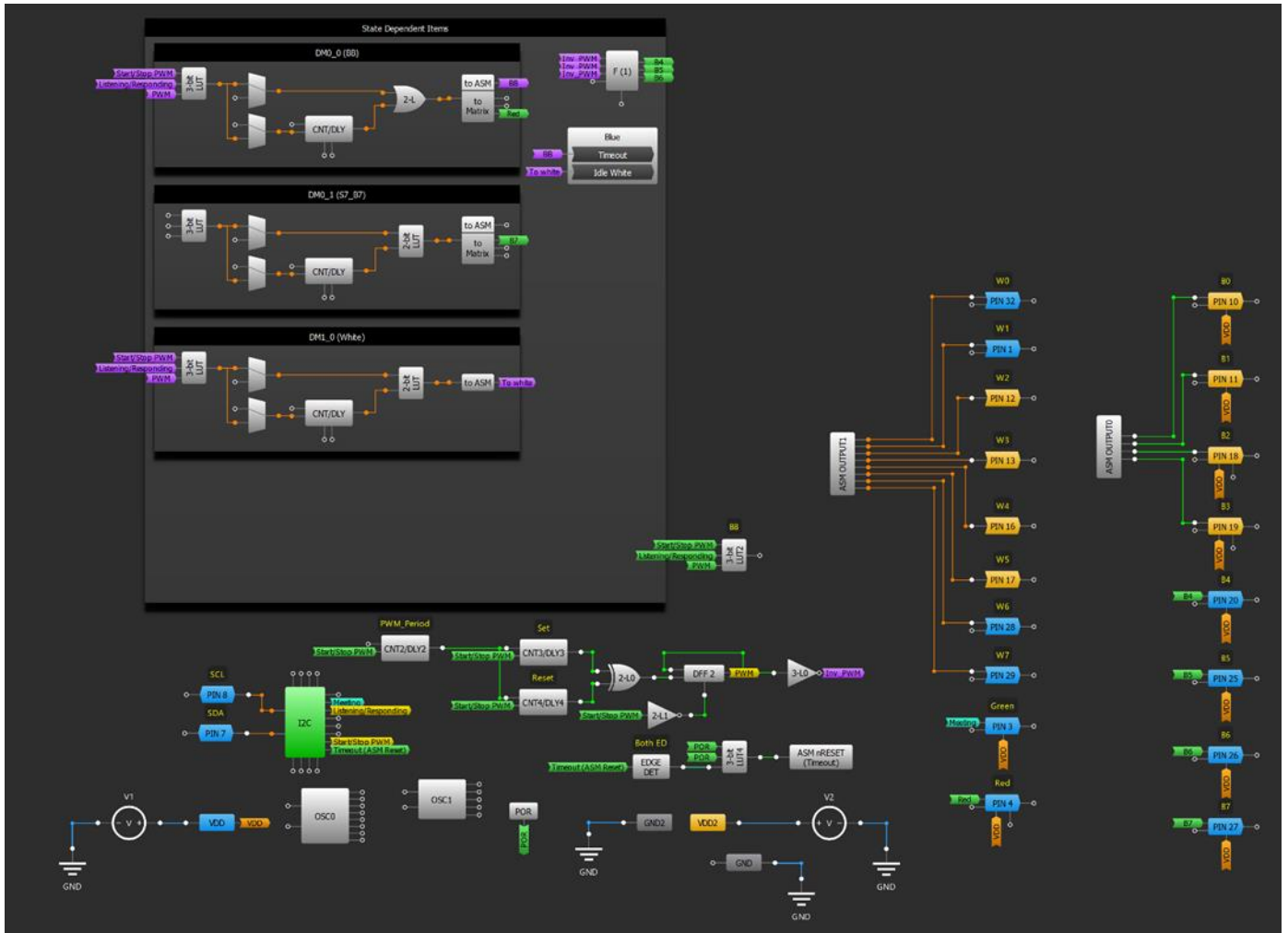


Figure 7: Blue State

- Channel 1 (yellow) → PIN#7 (SDA) with external 10kΩ pull up resistor
- Channel 2 (light blue) → PIN#8 (SCL) with external 10kΩ pull up resistor
- Channel 3 (magenta/3rd line) → PIN#32 (W0)
- Channel 4 (blue/bottom line) → PIN# 10 (B0)



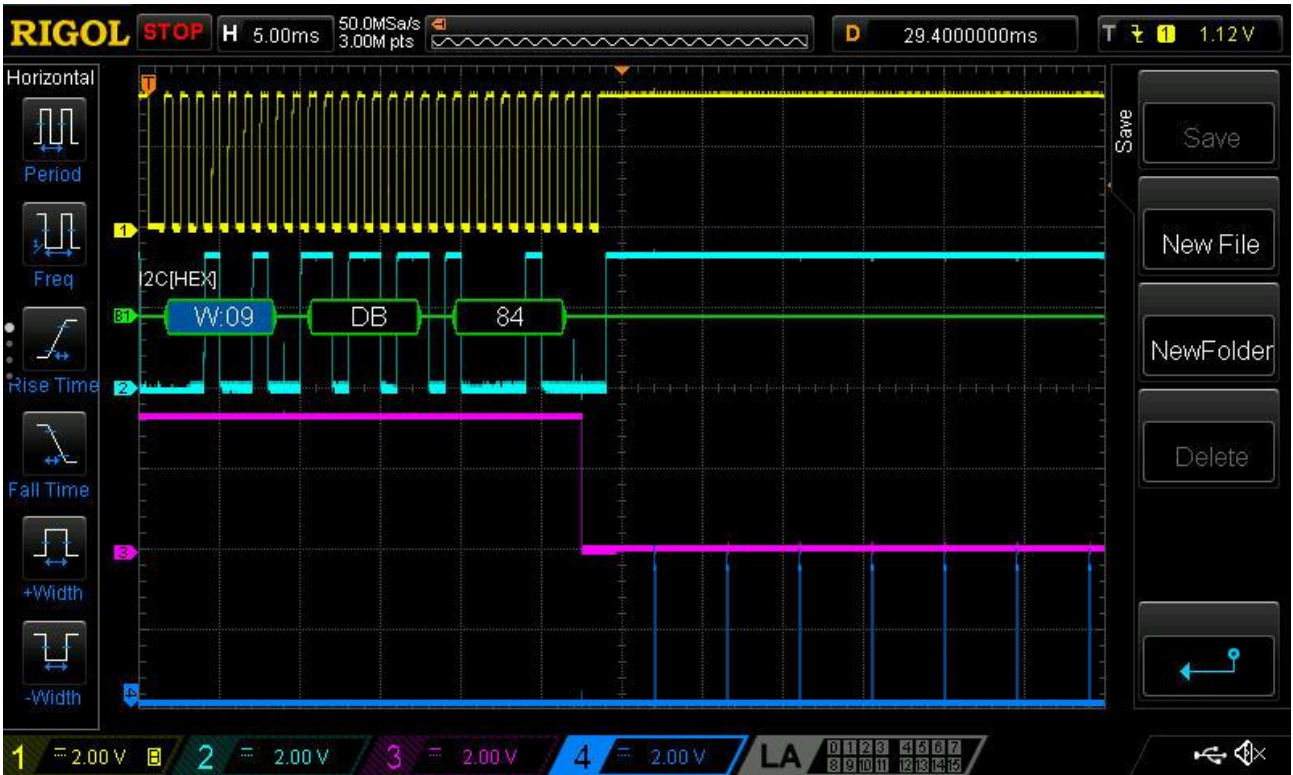


Figure 8: The Transition from the Idle Mode to the Listening Mode after Receiving I2C Command “Listening”

For the operation of the LED indicator in **Responding mode**, use the I2C command "Responding". This turns ON the PWM module , which alternately switches between the **Blue state** and the **Idle White state**. In this way, we achieve the White - Blue breathing effect (See [Figure 9](#)).

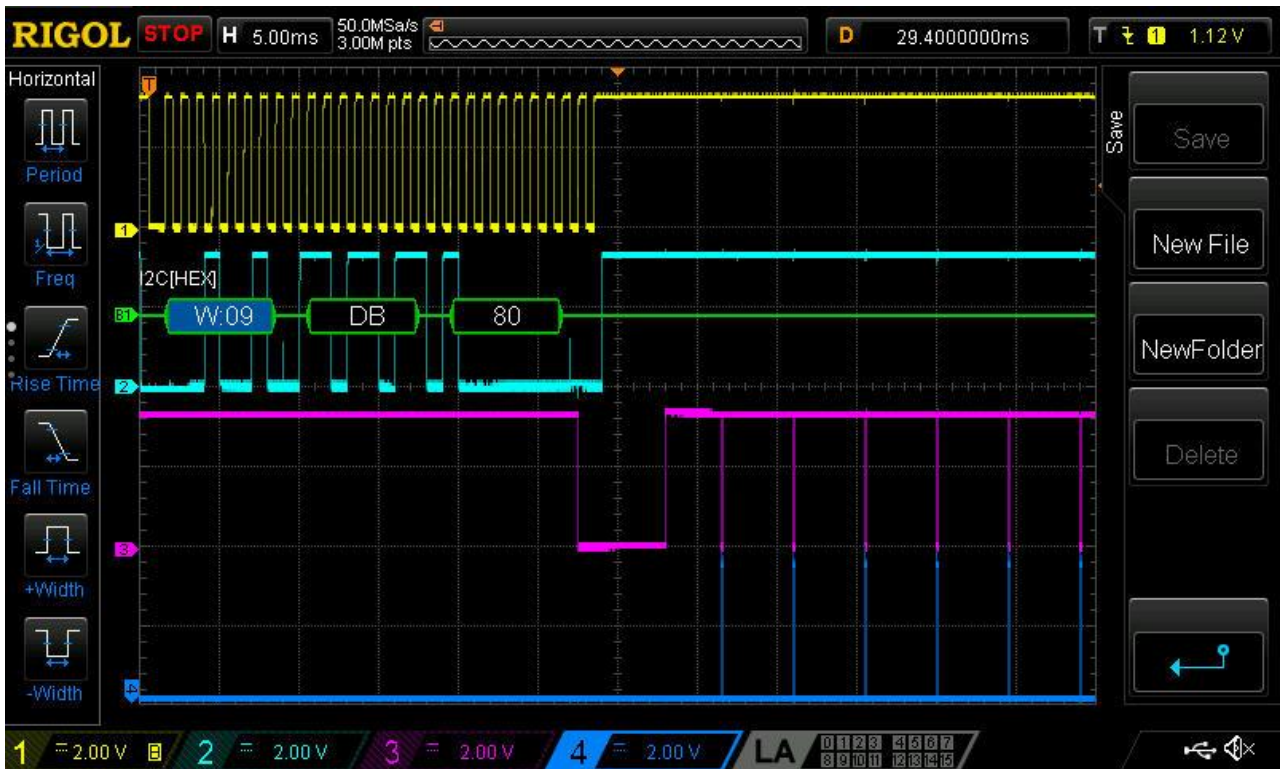


Figure 9: The Transition from the Thinking Mode to the Responding Mode after Receiving I2C Command “Responding”

Worm states WS0 – WS7 (Figure 10)

In the Thinking mode, the LEDs are filled halfway like a worm chasing its tail and rotating in circles. Head of the worm is blue, and tail is white. This is implemented by the cycled sequential switching of states from WS0 to WS7 with the I2C command "Thinking" (See Figure 11).

For the transition from the Thinking mode to the Responding mode, need to use the I2C command "Responding" which reset the ASM to the initial condition and, after the Timeout state, starts the White-Blue breathing (See Figure 9).

This state used the State Dependent Items with the next configurations: DM0\_0 (Worm 0), DM0\_1 (0) in the states WS0 – WS 6 and DM0\_1 (S7\_B7) in the state WS 7, F(1) (000\_111) in the states WS 0 – WS 3, WS 7 and F(1) (S4\_B4) in the state WS 4, F(1) (S5\_B5) in the state WS 5, F(1) (S6\_B6) in the state WS 6.

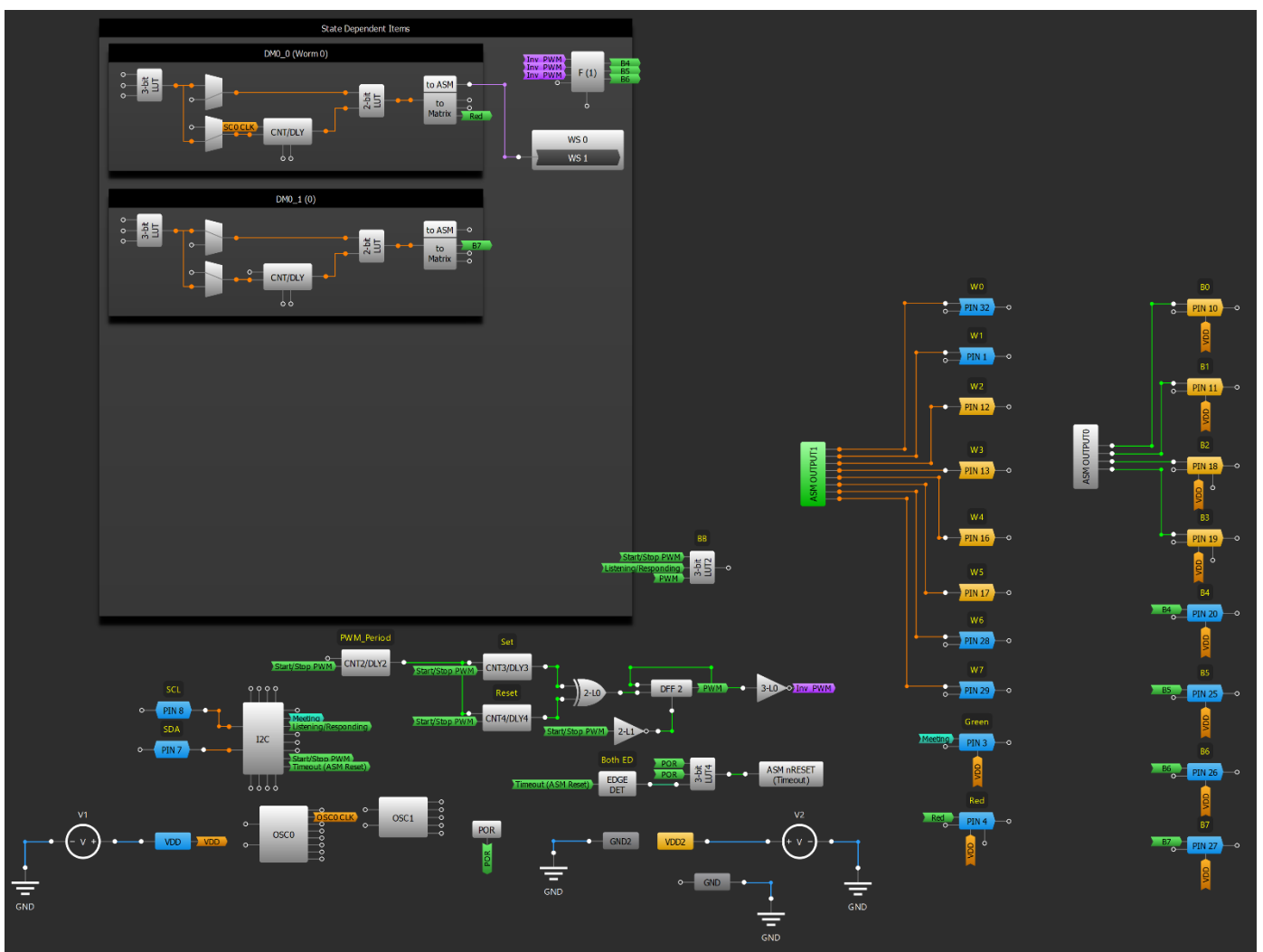


Figure 10: WS0 State

## Smart Speaker LED Indication with GreenPAK

D0 – PIN#32 (W0)

D1 – PIN#1 (W1)

D2 – PIN#12 (W2)

D3 – PIN#13 (W3)

D4 – PIN#16 (W4)

D5 – PIN#17 (W5)

D6 – PIN#28 (W6)

D7 – PIN#29 (W7)

Channel 1 (yellow) – PIN#7 (SDA) with external 10kΩ pull up resistor

D8 – PIN# 10 (B0)

Channel 2 (light blue) – PIN#8 (SCL) with external 10kΩ pull up resistor

D9 – PIN#11 (B1)

D10 – PIN#18 (B2)

D11 – PIN#19 (B3)

D12 – PIN#20 (B4)

D13 – PIN#25 (B5)

D14 – PIN#26 (B6)

D15 – PIN#27 (B7)

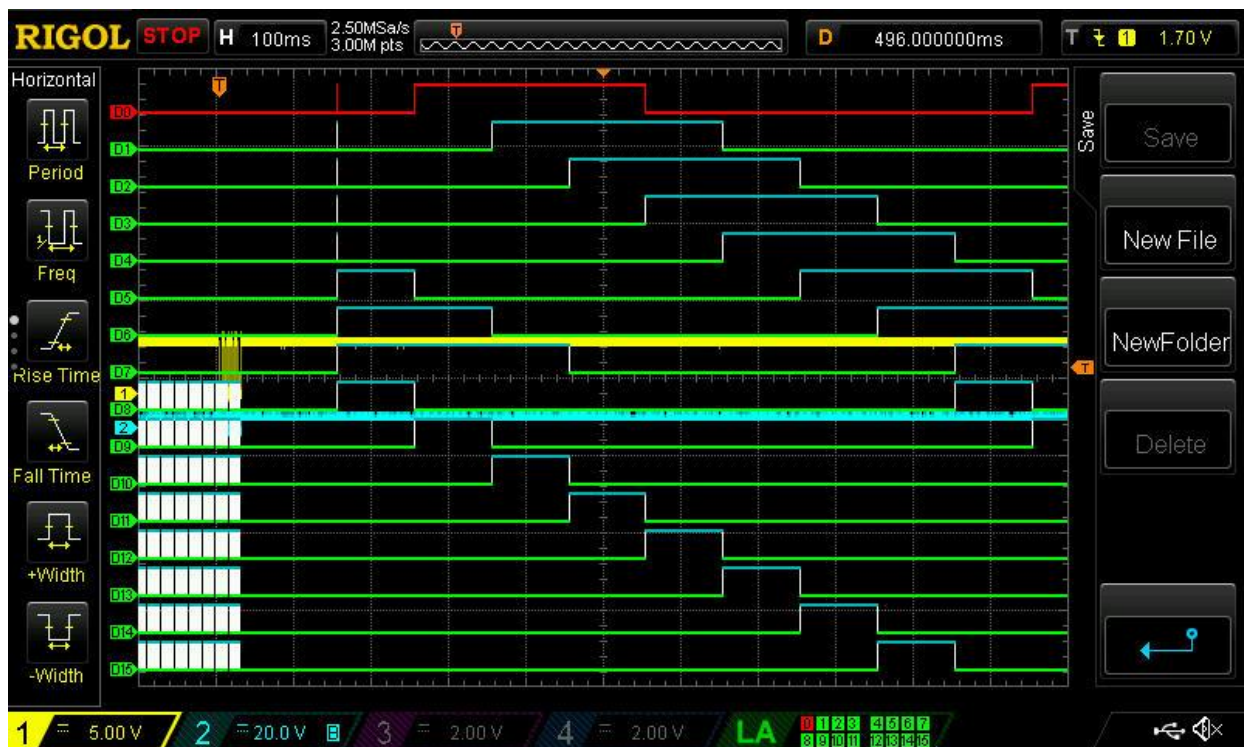


Figure 11: The transition from the Listening mode to the Thinking mode after receiving I2C Command “Responding”

**Meeting Green State** (See Figure 12).

For **Meeting mode**, we use only one **Meeting Green state**. In this state the green LED lights up. When the mics are turned off, the red LED lights up additionally. Transition from **Idle White state** to the **Meeting state** occurs on I2C command "Meeting" or "Meeting (Mics muted)" when user needs mics off.

In this state used the State Dependent Items with the next configurations: DM0\_0 (Red), DM0\_1 (0), DM1\_0 (To idle), and F(1) (None).

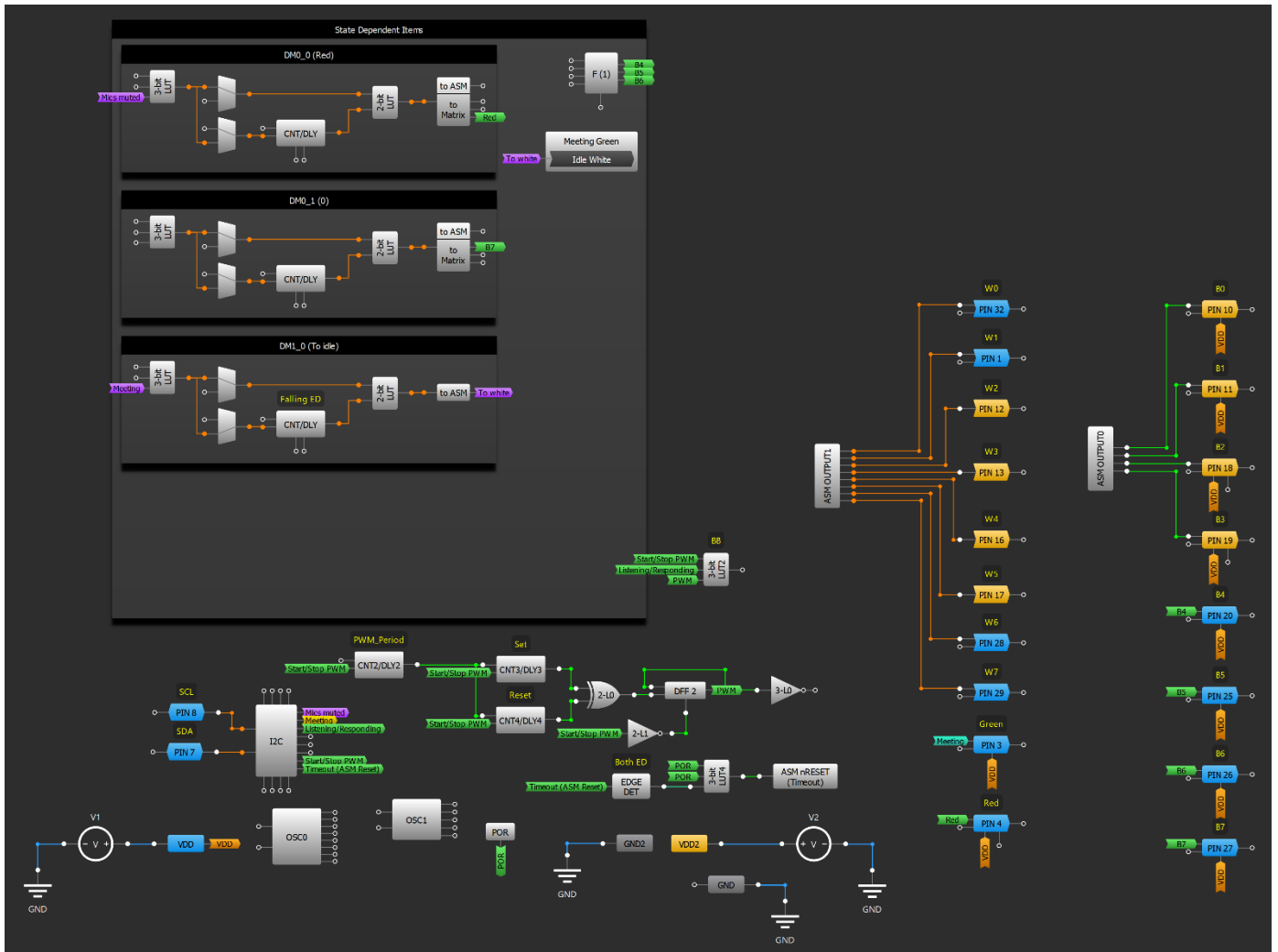


Figure 12: Meeting Green State

## 5. Development of a Test Sample of the LED Indicator

To verify the possibility of practical application, a test sample was developed, manufactured and tested.

When developing the printed circuit board, it was decided to make it double-sided in the form of a circle with a diameter of 35 mm (See [Figure 13](#) and [Figure 14](#)).

On the Top side, there is a GreenPAK SLG46880V and a 4-pin connector for power supply (VDD, GND) and transmission of I2C commands (SCL, SDA). The rest of the elements of the scheme are placed on Bottom side.

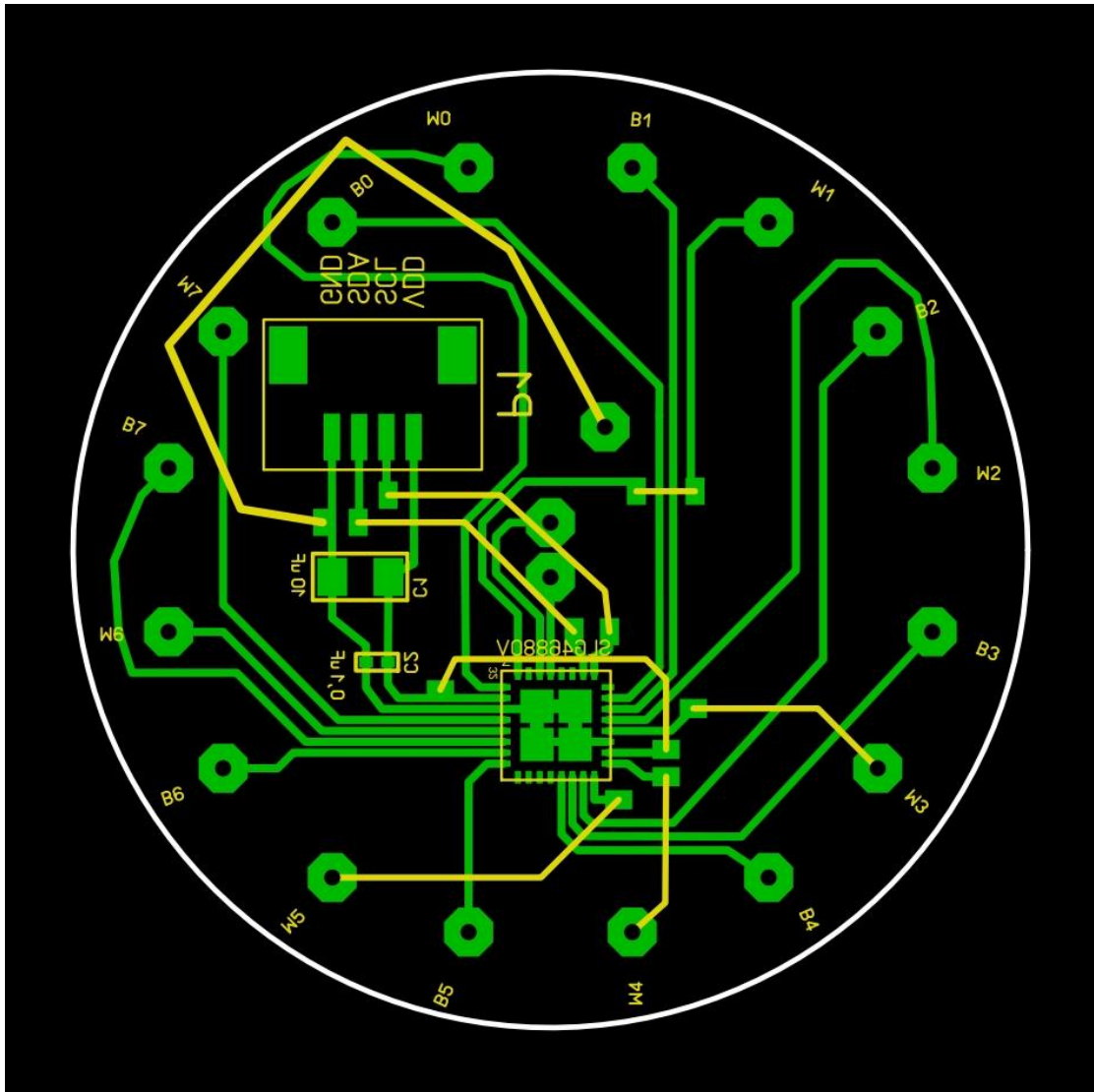


Figure 13: Top Side of PCB

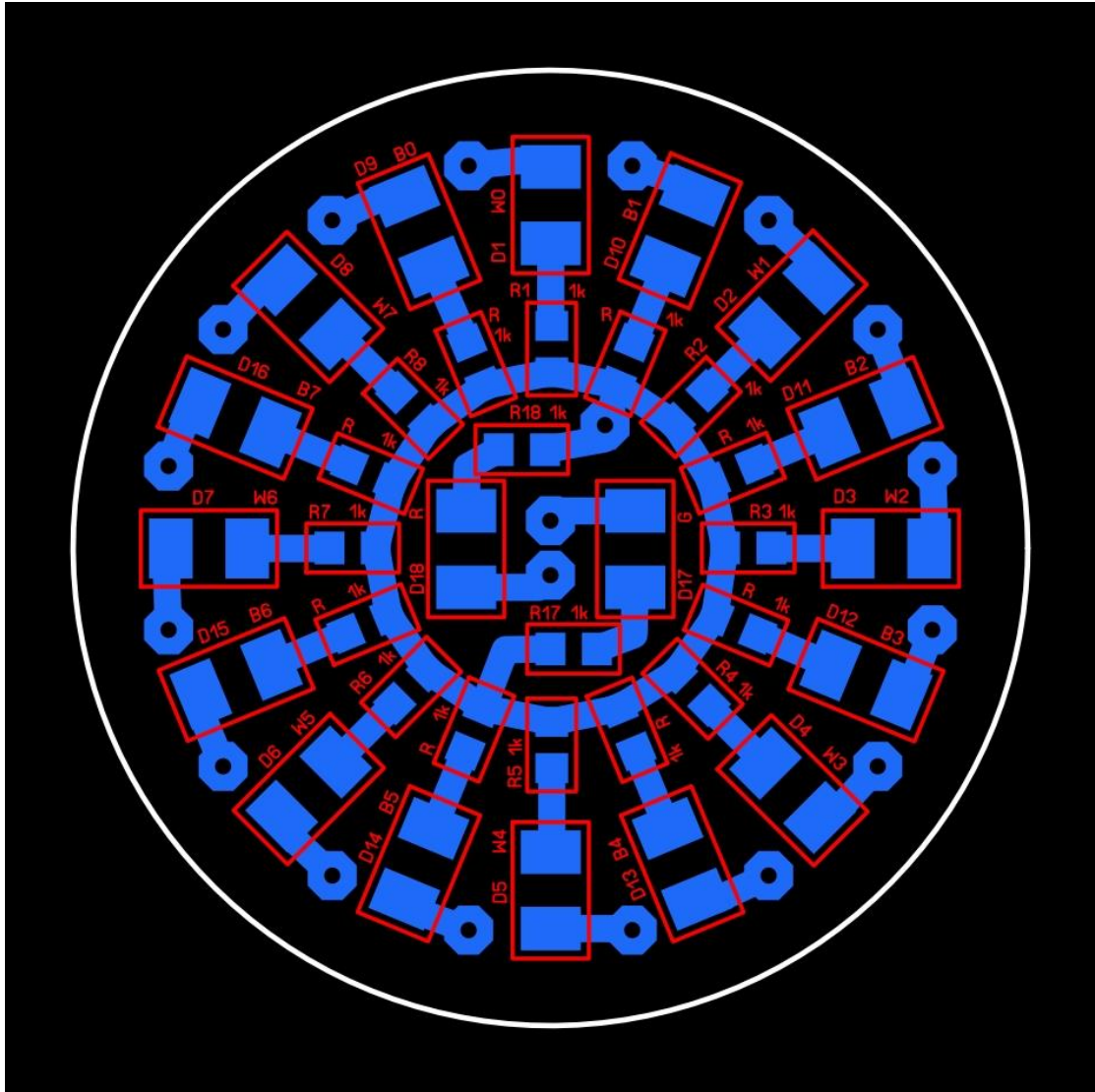


Figure 14: Bottom Side of PCB

On the Bottom side of the PCB there are placed eight white LEDs KT-2835W-01, eight blue LEDs KT-3528, one green LED KT-3528, and one red LED KT-3528. To limit the current, a 1 kΩ resistor is included in series with each LED (Figure 15, Figure 16).

The operation of the **Smart speaker LED indicator** in all modes can be viewed on a video [VID\\_Smart\\_speaker\\_LED\\_indicator](#).

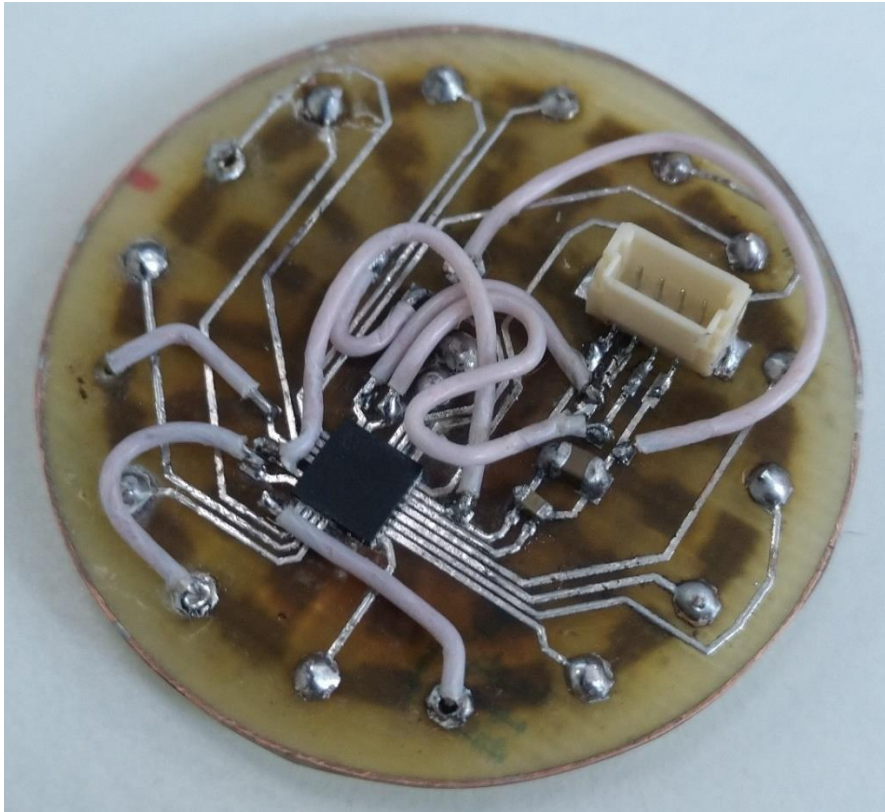


Figure 15: View on Top Side of a Soldering PCB

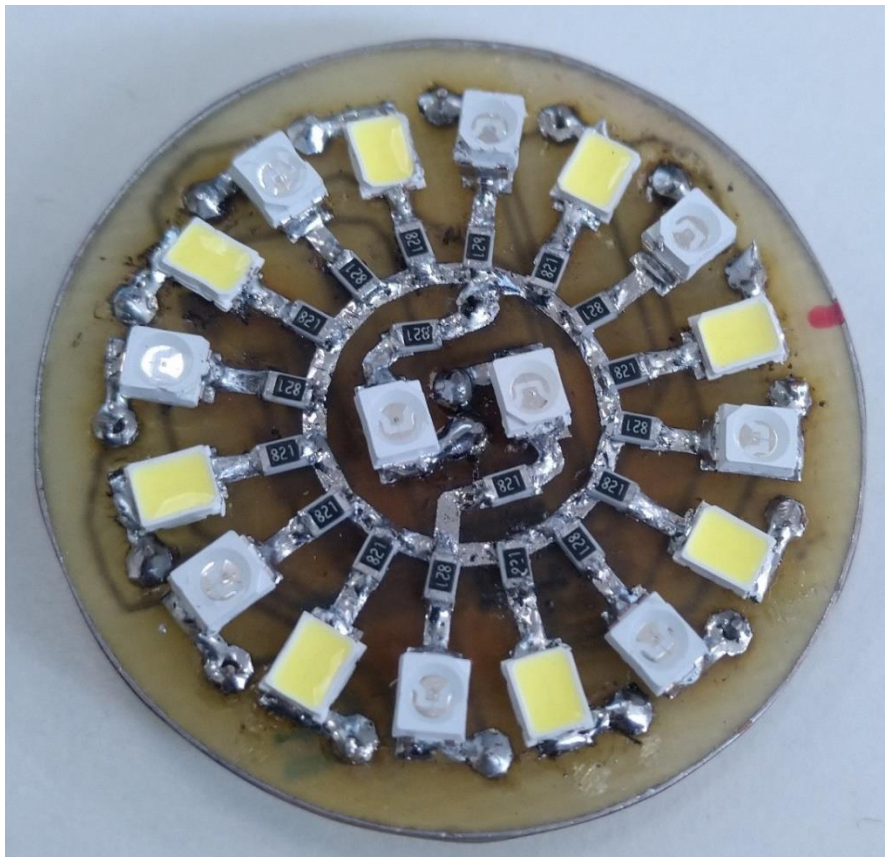


Figure 16: View on Bottom Side of a Soldering PCB

## 6. Conclusion

Due to its small size and low power consumption (for the presented design, the quiescent current is 1  $\mu\text{A}$ ) the use of GreenPAK SLG46880V will greatly simplify the manufacture and use of the Smart speaker LED indicator. This will reduce the load on the microcontroller of the Smart speaker, and the change of operating modes can be done by rewriting only one 8-bit register using I2C commands. In addition, the use of different sizes, types, and placement of SMD elements (resistors and LEDs) allows you to produce a LED indicator of any shape and appearance at the request of the customer.



## 7. Revision History

Revision	Date	Description
1.00	Dec 29, 2022	Initial release.

## IMPORTANT NOTICE AND DISCLAIMER

RENESAS ELECTRONICS CORPORATION AND ITS SUBSIDIARIES (“RENESAS”) PROVIDES TECHNICAL SPECIFICATIONS AND RELIABILITY DATA (INCLUDING DATASHEETS), DESIGN RESOURCES (INCLUDING REFERENCE DESIGNS), APPLICATION OR OTHER DESIGN ADVICE, WEB TOOLS, SAFETY INFORMATION, AND OTHER RESOURCES “AS IS” AND WITH ALL FAULTS, AND DISCLAIMS ALL WARRANTIES, EXPRESS OR IMPLIED, INCLUDING, WITHOUT LIMITATION, ANY IMPLIED WARRANTIES OF MERCHANTABILITY, FITNESS FOR A PARTICULAR PURPOSE, OR NON-INFRINGEMENT OF THIRD-PARTY INTELLECTUAL PROPERTY RIGHTS.

These resources are intended for developers who are designing with Renesas products. You are solely responsible for (1) selecting the appropriate products for your application, (2) designing, validating, and testing your application, and (3) ensuring your application meets applicable standards, and any other safety, security, or other requirements. These resources are subject to change without notice. Renesas grants you permission to use these resources only to develop an application that uses Renesas products. Other reproduction or use of these resources is strictly prohibited. No license is granted to any other Renesas intellectual property or to any third-party intellectual property. Renesas disclaims responsibility for, and you will fully indemnify Renesas and its representatives against, any claims, damages, costs, losses, or liabilities arising from your use of these resources. Renesas' products are provided only subject to Renesas' Terms and Conditions of Sale or other applicable terms agreed to in writing. No use of any Renesas resources expands or otherwise alters any applicable warranties or warranty disclaimers for these products.

(Disclaimer Rev.1.01 Jan 2024)

### Corporate Headquarters

TOYOSU FORESIA, 3-2-24 Toyosu,  
Koto-ku, Tokyo 135-0061, Japan  
[www.renesas.com](http://www.renesas.com)

### Trademarks

Renesas and the Renesas logo are trademarks of Renesas Electronics Corporation. All trademarks and registered trademarks are the property of their respective owners.

### Contact Information

For further information on a product, technology, the most up-to-date version of a document, or your nearest sales office, please visit [www.renesas.com/contact-us/](http://www.renesas.com/contact-us/).