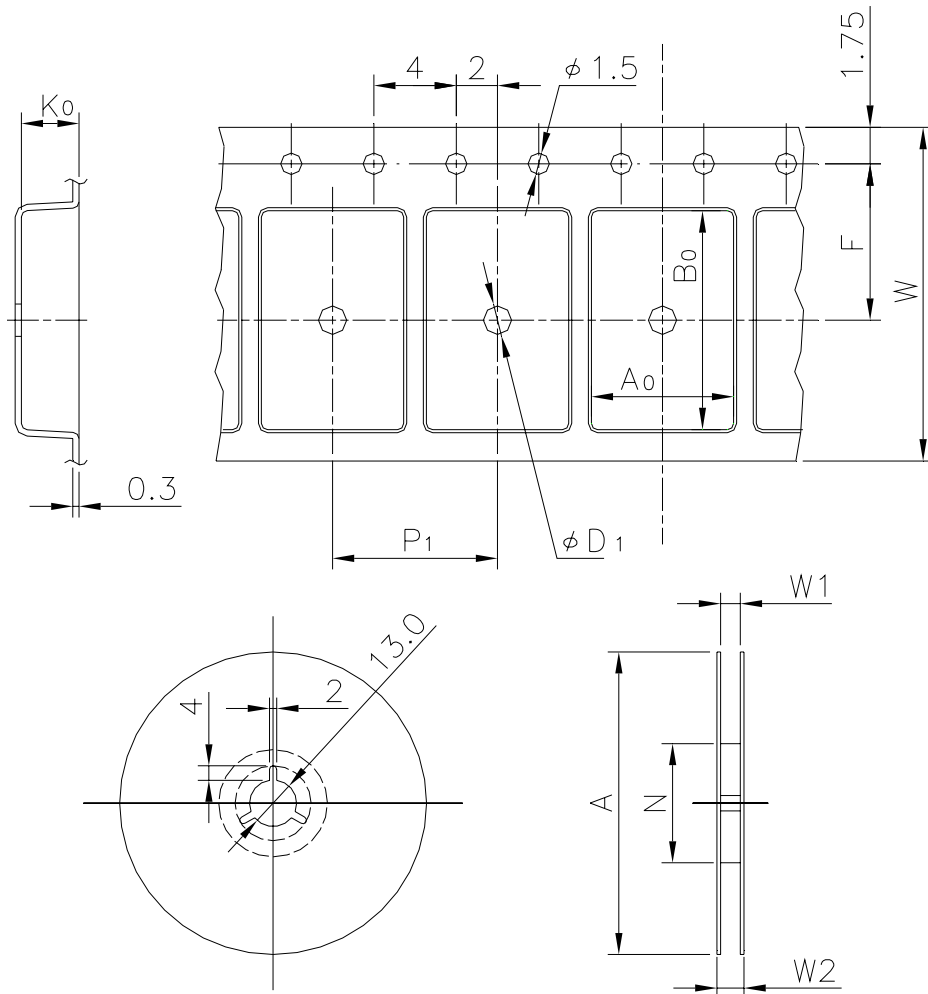


# EMBOSSED TAPE

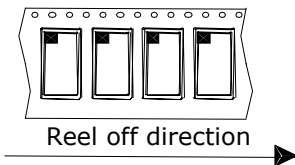
Taping Code	RENESAS Code	Previous Code
TE2420-3P	PLQP0100KD-A	FP-100T / FP-100TV



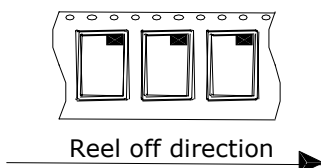
Unit:mm

## Standard Orientation of Package

The pin 1 is located in the hatching portion.



The pin 1 may also be located in the following portion for reverse bent packages and some QFPs.



Tape Dimensions (mm)	W	24
	$P_1$	20
	$A_0$	16.8
	$B_0$	16.8
	$K_0$	1.5
	F	11.5
	$D_1$	2.05
Reel Dimensions (mm)	A	330
	N	100
	$W_1$	25.4
	$W_2$	29.4
Maximum storage No. IC/Reel		1500
Material		Carbon PS
Surface resistance		Less than $1 \times 10^{11} \Omega / \square$
Packing form		Dry pack