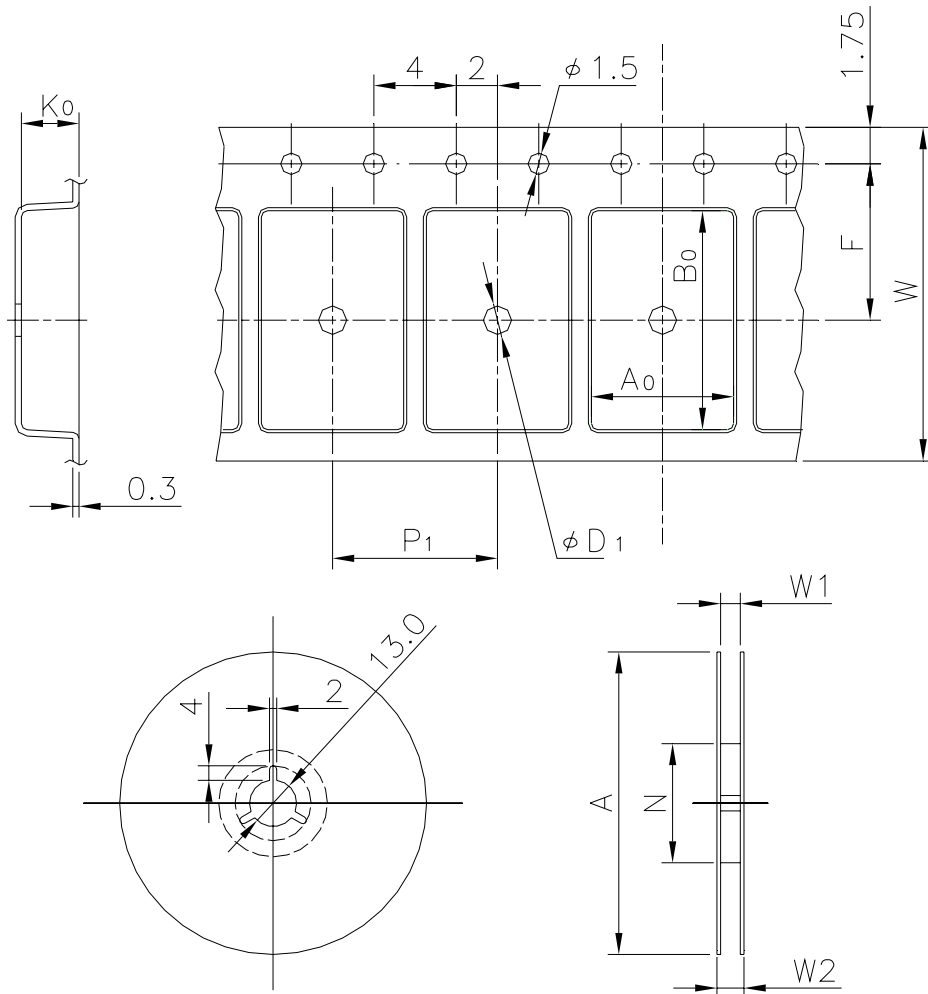


EMBOSSED TAPE

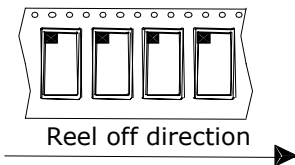
| Taping Code | RENESAS Code | Previous Code |
|------------------|--------------|---------------|
| MTE2416H-52PTG-A | PTSB0052LB-A | 52PTG-A |



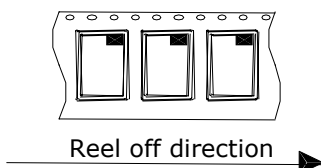
Unit:mm

Standard Orientation of Package

The pin 1 is located in the hatching portion.



The pin 1 may also be located in the following portion for reverse bent packages and some QFPs.



| | | |
|-----------------------------|-------|---|
| Tape Dimensions (mm) | W | 24 |
| | P_1 | 16 |
| | A_0 | 10.8 |
| | B_0 | 11.3 |
| | K_0 | 1.3 |
| | F | 11.5 |
| | D_1 | 2.05 |
| Reel Dimensions (mm) | A | 254 |
| | N | 100 |
| | W1 | 25.4 |
| | W2 | 29.4 |
| Maximum storage No. IC/Reel | | 1000 |
| Material | | Carbon PS |
| Surface resistance | | Less than $1 \times 10^{11} \Omega / \square$ |
| Packing form | | Dry pack |