

# ISL29501-CS-EVKIT1Z

Cat Shark Reference Design

The ISL29501-CS-EVKIT1Z is a distance measurement reference design consisting of an optical board and a controller board. It combines the ISL29501 chip with an OSRAM SFH 4550 IR emitting LED and OSRAM SFH 213FA photodiode. The two circuit boards are connected together with a flat flex cable. Included is a USB flash drive containing the evaluation software for a PC and related technical documents.

The ISL29501-CS-EVKIT1Z kit also allows quick evaluation of the ISL29501 performance for a 2m sensing system.

## Specifications

This board has been configured and optimized for the following operating conditions:

- Micro USB 2.0 connection
- $V_{IN} = 5V$  (USB power)
- $I_{DD}$  maximum = 225mA
- P optical maximum = 70mW
- Wavelength = 860nm
- Optical duty cycle maximum = 50%
- Emission angle =  $\pm 3^\circ$
- Coherent light - No

## Features

- Self contained measurement system
- Enables proximity detection and distance measurement
- Emitter DAC with programmable current up to 255mA
- Operates in continuous or single shot mode
- On-chip active ambient light rejection
- Regulated power 2.7V to 3.3V USB or external supply
- I<sup>2</sup>C interface supporting 1.8V and 3.3V bus
- Small size 38mmx20mm

## Kit Contents

- Evaluation Board
- USB cable
- Software
- Technical documentation

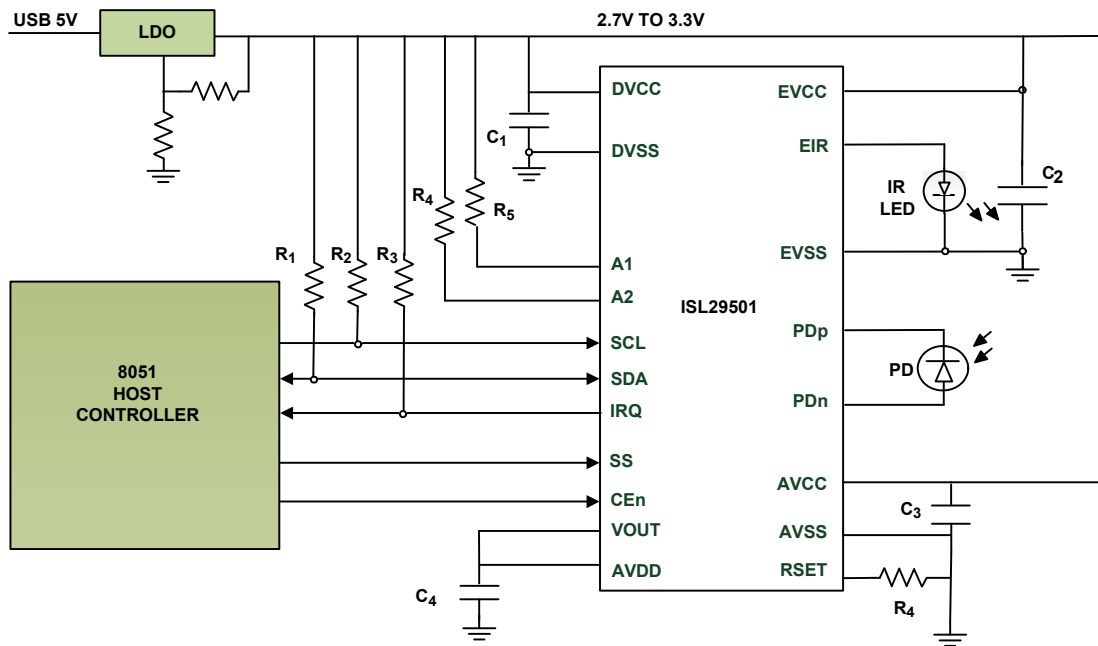


Figure 1. Cat Shark Block Diagram

## Contents

|                                              |           |
|----------------------------------------------|-----------|
| <b>1. Functional Description</b>             | <b>3</b>  |
| 1.1 Operating Features                       | 3         |
| 1.1.1 External Power Supply                  | 3         |
| 1.1.2 External Microprocessor                | 3         |
| 1.1.3 System Calibration                     | 3         |
| 1.1.4 Calibrating Cat Shark                  | 3         |
| 1.2 Operating Range                          | 4         |
| 1.3 Quick Start Guide                        | 4         |
| 1.4 Changing Settings                        | 4         |
| 1.5 Temperature Compensation                 | 4         |
| <b>2. Board Design</b>                       | <b>5</b>  |
| 2.1 Layout Guidelines                        | 5         |
| 2.2 Schematic Diagrams                       | 6         |
| 2.2.1 ISLI2UEV1Z                             | 6         |
| 2.2.2 ISL29501-CS1Z Optics Board             | 7         |
| 2.3 Bill of Materials                        | 8         |
| 2.3.1 ISLI2UEV1Z                             | 8         |
| 2.3.2 ISL29501-CS1Z Optics Board             | 9         |
| 2.3.3 ISL29501-CS-EVKIT1Z Cat Shark Assembly | 10        |
| 2.4 Board Layout                             | 11        |
| 2.4.1 ISL29501-CS1Z PCB Layers               | 11        |
| 2.4.2 ISLI2UEV1Z PCB Layers                  | 12        |
| <b>3. Ordering Information</b>               | <b>12</b> |
| <b>4. Revision History</b>                   | <b>12</b> |

# 1. Functional Description

The ISL29501-CS-EVKIT1Z is both a reference design and evaluation kit that provides a single platform to evaluate the features of the ISL29501. The ISL29501-CS-EVKIT1Z circuit board and supplied enclosure deliver maximum electrical and optical performance.

The system sends out light pulses through the emitter LED and receives returned light pulses that reflect off a target on the optics board. The difference in phase of the emitted signal and the return signal is converted to distance by the ISL29501 and is graphed in the evaluation software. The magnitude of the return signal is graphed as well. This and additional data are available in the chip registers, see *UG054, ISL29501 Evaluation Software Manual* for additional details.

## 1.1 Operating Features

The ISL29501-CS-EVKIT1Z evaluation kit is shown in [Figure 2](#) and [Figure 3](#). The hardware enable function is controlled by a software switch. A Power-Good (PG) LED indicates that the LDO is regulating properly when not lit.

### 1.1.1 External Power Supply

For high current/high duty cycle setups USB power may not be able to power the board.

### 1.1.2 External Microprocessor

For debugging of customer written software, it might be useful to connect the Cat Shark to a different microprocessor. All signals are available on the optics board connector J1. See the schematic for details. SCL and SDA are compatible with 1.8V microprocessors but unfortunately the support pins require 3V signaling.

### 1.1.3 System Calibration

Before meaningful measurements can be made the calibration registers in the chip need to be loaded. This can be done in two ways. The first is to load a profile that contains data into the GUI. This can be one of the Renesas provided profiles or one that was saved previously by the user. See *UG054, "SL29501 Evaluation Software Manual* for further details. The second is to calibrate the board directly.

### 1.1.4 Calibrating Cat Shark

There are three separate standard calibrations that need to be executed to calibrate the system. These are magnitude, crosstalk, and distance calibrations.

#### 1.1.4.1 Magnitude Calibration

Magnitude calibration is done after the emitter current and duty cycle settings are programmed. It is a dark (no light) calibration that takes less than 1s to run. Run this calibration from the GUI.

#### 1.1.4.2 Crosstalk Calibration

Crosstalk is defined as a signal that reaches the ISL29501 chip directly without bouncing off the target. This can be electrical or optical. At close range and large return signal values, crosstalk has a minor impact on distance measurements. At the far end of the distance range, the crosstalk might exceed the signal, adding error to measurements.

For this calibration, the user makes a distance measurement with the return signal blocked from reaching the photodiode. This can be done in two ways. The first is to cover the emitter or photodiode optically preventing any of the emitted signals from reaching the photodiode. The second is to point the board toward infinity so there is no return signal. **Note:** Care must be taken because small amounts of signal is returned by objects up to 4 meters away. The emitting angle of the light is  $\pm 3^\circ$  so you must ensure that there are no objects within this cone when doing this calibration.

Because the chip sees none of the emitted signal, anything received is crosstalk. Run this calibration from the GUI after running Magnitude calibration.

### 1.1.4.3 Distance Calibration

Variation in delay of emitters, photodiodes, and the ISL29501 change the signal path delay. To compensate for this, a reference point at a known distance needs to be established. This reference is calculated during distance calibration. The process involves making a distance measurement at a known distance. While it is not critical it is best to use a reference distance about 25% of the intended range. The GUI writes the correct registers that establish the reference distance inside the chip.

It is important that there are no objects inside the  $\pm 3^\circ$  emitting angle other than the target.

When these calibration registers are written, all succeeding distances have this measured value subtracted from the real-time value. Run this calibration from the GUI after running crosstalk calibration. See *UG054, ISL29501 Evaluation Software Manual* for details on how to run the calibrations in the GUI.

## 1.2 Operating Range

The controller circuit board contains an LDO to convert the input voltage to the ISL29501 operating voltage range, 2.7V to 3.3V. By default, the controller board is configured for USB power. The LDO resistors are rationed to create a 3.0V power rail. All other set-up conditions can be configured through the chip registers and evaluation software.

## 1.3 Quick Start Guide

To start making distance measurements follow these simple steps.

1. The board set comes assembled with the optics board connected to the controller board with an 8-pin flex cable. This cable should be as short as possible to minimize voltage drops.
2. Plug the USB cable into the controller board design and the PC.
3. Point the emitter toward the desired target.
4. Double click **TOF.exe** to start the GUI.
5. From the GUI click on **File** → **Load Profile** → **filename** to load safe initial register settings and calibration data.
6. Click either **Start** or **Step** to begin making distance measurements.

## 1.4 Changing Settings

When the board is running and making measurements, the user may want to change settings. The user has the ability to change any of the chip registers with the evaluation software, see *UG054, ISL29501 Evaluation Software Manual* for details. **Important:** If the pulse duty cycle or the emitter current is changed, the user must redo the standard calibrations. This process is described in the sections under [Calibrating Cat Shark](#).

## 1.5 Temperature Compensation

The ISL29501 has a temperature compensation built into the chip. This is an advanced calibration, which involves collecting temperature vs distance data and programming the compensation registers. Initially, Renesas generates these coefficients from customer collected data. The process for collecting data is described in *AN1967, ISL29501 Temperature and Ambient Light Data Collection*.

Renesas strongly recommends that customers evaluate these parameters as a last step in their evaluation. To avoid temperature effects low integration times,  $\text{reg } 0x10 < 0x06$  should be used.

## 2. Board Design

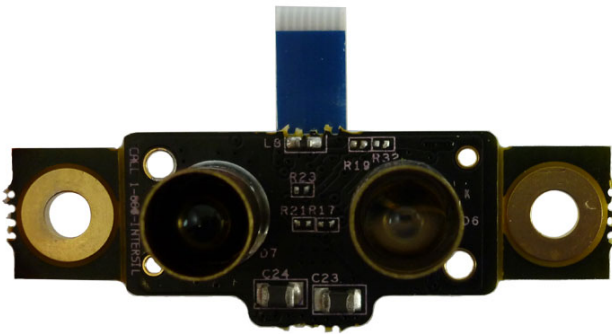


Figure 2. ISL29501-CS1Z Top

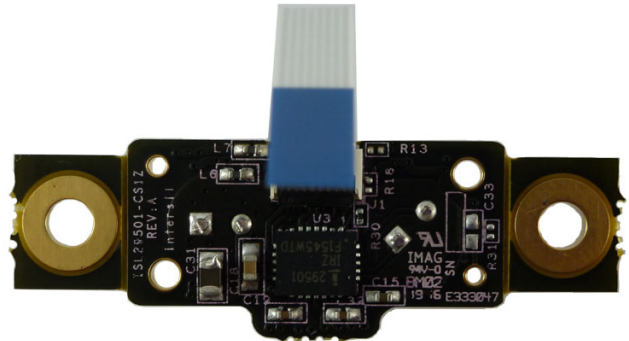


Figure 3. ISL29501-CS1Z Bottom.

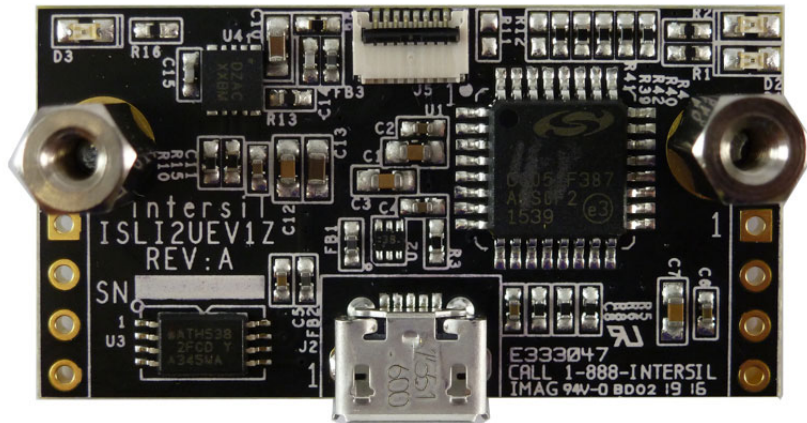


Figure 4. ISLI2UEV1Z

### 2.1 Layout Guidelines

The ISL29501-CS-EVKIT1Z PCB layout has been optimized for electrical and thermal performance. Care needs to be placed in decoupling circuits and noise isolation. Cat Shark follows good design techniques but additional suggestions are available in *AN1917, ISL29501 Layout Design Guide* (see [ISL29501-CS1Z PCB Layers](#) and [ISLI2UEV1Z PCB Layers](#)).

**Note:** Visible on the bottom side of the board are the emitter LED and photodiode. Each is surrounded by a brass tube. These tubes are grounded and serve as terminators for any electric fields. They prevent crosstalk from the emitter to the photodiode.



2.2.2 ISL29501-CS1Z Optics Board

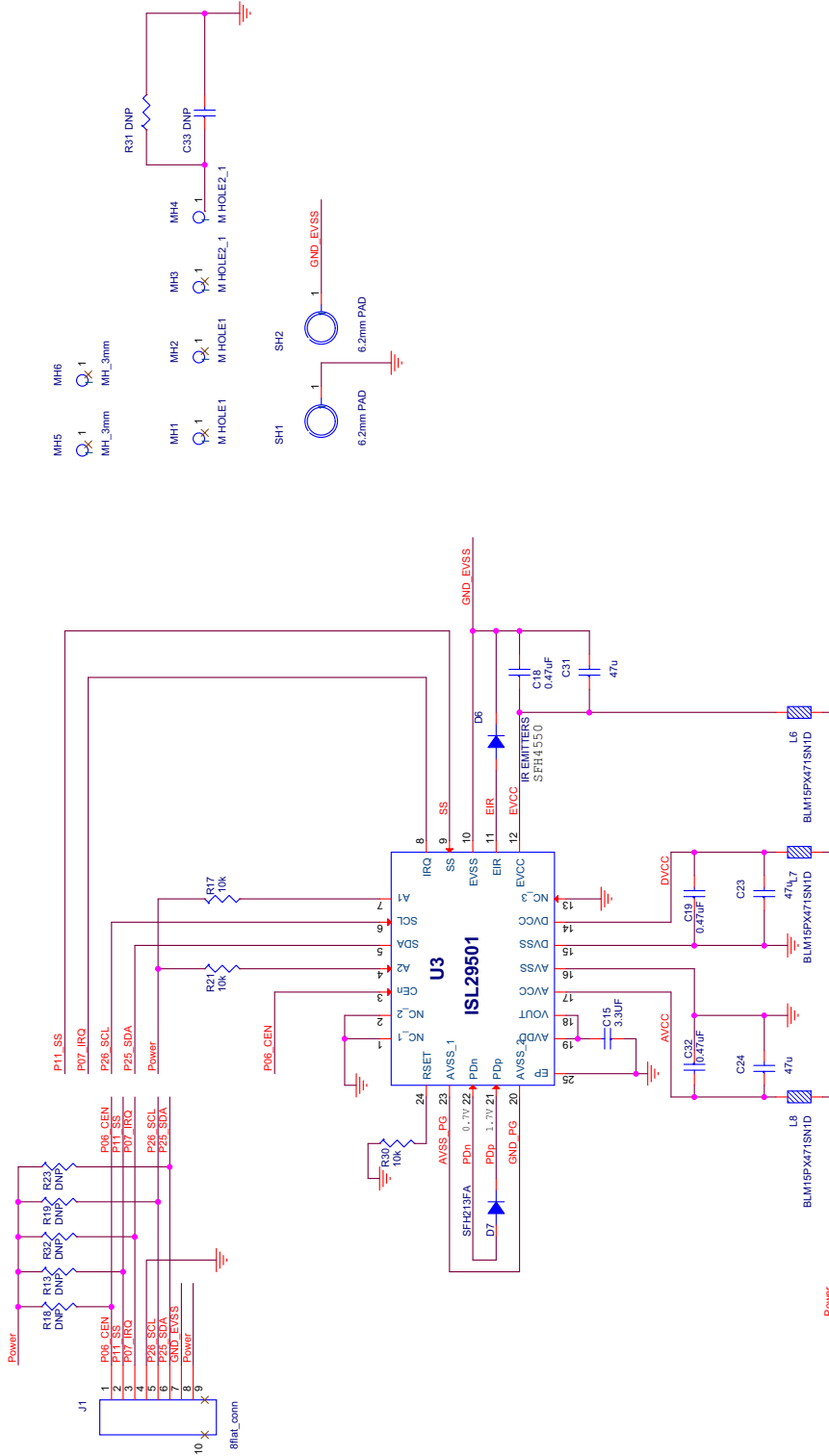


Figure 6. ISL29501-CS1Z Schematic - Optics Sheet

NOTE: DNP is DO NOT POPULATE

## 2.3 Bill of Materials

### 2.3.1 ISLI2UEV1Z

| Qty | Reference Designator    | Description                                                        | Manufacturer         | Manufacturer Part  |
|-----|-------------------------|--------------------------------------------------------------------|----------------------|--------------------|
| 1   |                         | PWB-PCB, ISLI2UEV1Z, REVB, ROHS                                    | IMAGINEERING INC     | ISLI2UEV1ZREVBPCB  |
| 6   | C2, C4, C5, C6, C8, C11 | CAP, SMD, 0402, 0.1 $\mu$ F, 25V, 10%, X7R, ROHS                   | MURATA               | GRM155R71E104KE14D |
| 2   | C14, C15                | CAP, SMD, 0402, 100pF, 16V, 10%, NP0, ROHS                         | AVX                  | 0402YA101KAT2A     |
| 4   | C1, C3, C7, C12         | CAP, SMD, 0603, 1.0 $\mu$ F, 10V, 10%, X7R, ROHS                   | AVX                  | 0603ZC105KAT2A     |
| 2   | C10, C13                | CAP, SMD, 0603, 10 $\mu$ F, 16V, 10%, X5R, ROHS                    | MURATA               | GRM188R61C106KAALD |
| 1   | J2                      | CONN-RECEPTACLE, USB-MICRO B, SMD, 5 CONTACT, R/A, ROHS            | MOLEX                | 1050170001         |
| 1   | J5                      | CONN-FFC/FPC FLAT FLEX, SMD, 8P, 0.5mm PITCH, R/A, ROHS            | MOLEX                | 5034800800         |
| 1   | D2                      | LED, SMD, 0603, GREEN CLEAR, 2V, 20mA, 574nm, 35mcd, ROHS          | LITEON/VISHAY        | LTST-C191KGKT      |
| 2   | D1, D3                  | LED, SMD, 0603, RED CLEAR, 2V, 20mA, 631nm, 54mcd, ROHS            | LITEON/VISHAY        | LTST-C191KRKT      |
| 1   | U3                      | IC-2-WIRE SERIAL EEPROM, 8P, TSSOP, 1MHz, 512KBIT, ROHS            | ATMEL                | AT24C512C-XHD      |
| 1   | U1                      | IC-PROGRAMMED USB $\mu$ CONTROLLER, 32P, LQFP, 8-BIT, 48MIPS, ROHS | SILICON LABORATORIES | C8051F387-GQ       |
| 1   | U4                      | IC-1A LDO ADJ. VOLT REGULATOR, 10P, DFN, 3x3, ROHS                 | Renesas              | ISL80101AIRAJZ     |
| 1   | U2                      | IC-TVS, 4-CHANNEL ESD SOLUTION, 6P, SON6, ROHS                     | TEXAS INSTRUMENTS    | TPD4S012DRYR       |
| 1   | R3                      | RES, SMD, 0402, 100 $\Omega$ , 1/16W, 1%, TF, ROHS                 | VENKEL               | CR0402-16W-1000FT  |
| 5   | R4, R5, R6, R7, R8      | RES, SMD, 0402, 1k, 1/16W, 1%, TF, ROHS                            | VENKEL               | CR0402-16W-1001FT  |
| 5   | R10, R39, R40, R41, R42 | RES, SMD, 0402, 10k, 1/16W, 1%, TF, ROHS                           | PANASONIC            | ERJ-2RKF1002X      |
| 1   | R15                     | RES, SMD, 0402, 24.9k, 1/16W, 1%, TF, ROHS                         | PANASONIC            | ERJ-2RKF2492       |
| 4   | R1, R2, R9, R16         | RES, SMD, 0402, 2.61k, 1/16W, 1%, TF, ROHS                         | VENKEL               | CR0402-16W-2611FT  |



| Qty | Reference Designator | Description                                                         | Manufacturer | Manufacturer Part |
|-----|----------------------|---------------------------------------------------------------------|--------------|-------------------|
| 1   | R13                  | RES, SMD, 0402, 499Ω, 1/16W, 1%, TF, ROHS                           | VENKEL       | CR0402-16W-4990FT |
| 3   | FB1, FB2, FB3        | FERRITE BEAD, 1 LINE SIGNAL, SMD, 0402, 470Ω at 100MHz, 200mA, ROHS | MURATA       | BLM15BD471SN1D    |
| 0   | J1, J4, R11, R12     | DO NOT POPULATE OR PURCHASE                                         |              |                   |
| 1   | AFFIX TO BACK OF PCB | LABEL-DATE CODE_LINE 1: YRWK/REV#, LINE 2: BOM NAME                 | Renesas      | LABEL-DATE CODE   |

### 2.3.2 ISL29501-CS1Z Optics Board

| Qty | Reference Designator         | Description                                                         | Manufacturer         | Manufacturer Part    |
|-----|------------------------------|---------------------------------------------------------------------|----------------------|----------------------|
| 1   |                              | PWB-PCB, ISL29501-CS1Z, REVA, ROHS                                  | IMAGINEERING INC     | ISL29501-CS1ZREVAPCB |
| 1   | C15                          | CAP, SMD, 0402, 3.3μF, 4V, 20%, X5R, ROHS                           | TAIYO YUDEN          | AMK105BJ335MV-F      |
| 2   | C19, C32                     | CAP, SMD, 0402, 0.47μF, 25V, 10%, X5R, ROHS                         | TDK                  | C1005X5R1E474K050BB  |
| 1   | C18                          | CAP, SMD, 0603, 0.47μF, 25V, 10%, X7R, ROHS                         | MURATA               | GRM188R71E474KA12D   |
| 3   | C23, C24, C31                | CAP, SMD, 0805, 47μF, 10V, 20%, X5R, ROHS                           | TDK                  | C2012X5R1A476M125AC  |
| 1   | J1                           | CONN-FFC/FPC FLAT FLEX, SMD, 8P, 0.5mmPITCH, R/A, ROHS              | MOLEX                | 5034800800           |
| 1   | D6                           | LED-EMITTER IR, TH, T1 3/4, 1.5V, 100mA, 850nm, ROHS                | OSRAM                | SFH4550              |
| 1   | U3                           | IC-TOF SIGNAL PROCESSOR, 24P, QFN, ROHS                             | Renesas              | ISL29501IRZ-T7       |
| 3   | R17, R21, R30                | RES, SMD, 0201, 10k, 1/20W, 1%, TF, ROHS                            | PANASONIC            | ERJ-1GEF1002C        |
| 3   | L6, L7, L8                   | FERRITE BEAD, 1 LINE SIGNAL, SMD, 0402, 470Ω at 100MHz, 200mA, ROHS | MURATA               | BLM15BD471SN1D       |
| 2   | SH1, SH2 *Surrounds D6, D7.  | TUBE-BRASS, Alloy#260/270, 0.25OD, 0238ID, 0.394LENGTH, ROHS        | K&S Precision Metals | CATSHARK-BRASSTUBE   |
| 0   | C33                          | DO NOT POPULATE OR PURCHASE                                         |                      |                      |
| 0   | R13, R18, R19, R23, R31, R32 | DO NOT POPULATE OR PURCHASE                                         |                      |                      |
| 1   | AFFIX TO BACK OF PCB         | LABEL-DATE CODE_LINE 1: YRWK/REV#, LINE 2: BOM NAME                 | Renesas              | LABEL-DATE CODE      |
| 1   | D7                           | IC-PHOTODIODE, RADIAL, 2P, 5mm, 50V, 900nm, 1nA, ROHS               | OSRAM                | SFH213-FA            |

## 2.3.3 ISL29501-CS-EVKIT1Z Cat Shark Assembly

| Qty | Reference Designator                                                                                                                                                                                                                                  | Description                                                | Manufacturer            | Manufacturer Part     |
|-----|-------------------------------------------------------------------------------------------------------------------------------------------------------------------------------------------------------------------------------------------------------|------------------------------------------------------------|-------------------------|-----------------------|
| 1   | SEE ASSEMBLY INSTRUCTIONS                                                                                                                                                                                                                             | CABLE, FLAT-FLEX, 8CONDUCT, 0.5mmPITCH, 30mmLENGTH, ROHS   | MOLEX                   | 152660073             |
| 1   | BAG & SHIP W/BOARD                                                                                                                                                                                                                                    | CABLE-USB TYPE A MALE to TYPE MICRO-B MALE, 3FT, ROHS      | QUALTEK ELECTRONICS     | 3025010-03            |
| 1   | SEE DOCUMENT #1                                                                                                                                                                                                                                       | PWB-FG, ISL29501-CS1Z, ROHS                                | Renesas                 | ISL29501-CS1ZFG       |
| 1   | SEE DOCUMENT #1                                                                                                                                                                                                                                       | PWB-FG, ISLI2UEV1Z, ROHS                                   | Renesas                 | ISLI2UEV1ZFG          |
| 4   | SEE ASSEMBLY INSTRUCTIONS                                                                                                                                                                                                                             | SCREW, M2.5, 4mm, METRIC, PANHEAD, SLOTTED, STEEL, ROHS    | KEYSTONE                | 29300                 |
| 2   | SEE ASSEMBLY INSTRUCTIONS                                                                                                                                                                                                                             | STANDOFF, M2.5, 8mm, METRIC, F/F, HEX, THREAD, BRASS, ROHS | ASSMANN ELECTRONICS INC | V6516B                |
| 1   | Place assy in bag                                                                                                                                                                                                                                     | BAG, STATIC BUBBLE, 4X5, SELF-SEAL, ROHS                   | ULINE                   | S-6660                |
| 1   | Face boards top to top. Insert screws from bottom of boards and attach standoffs between board tops. Connect cable between J1 on ISL29501-CS1Z and J5 on ISLI2UEV1Z. Lift retainers on connectors, insert cable, and lower retainers to secure cable. | Instructions for assembly.                                 | Renesas                 | ASSEMBLY INSTRUCTIONS |
| 1   | FINAL ASSEMBLY DWG                                                                                                                                                                                                                                    | See attached document for manual or visual instruction     | Renesas                 | DOCUMENT #1           |

## 2.4 Board Layout

### 2.4.1 ISL29501-CS1Z PCB Layers

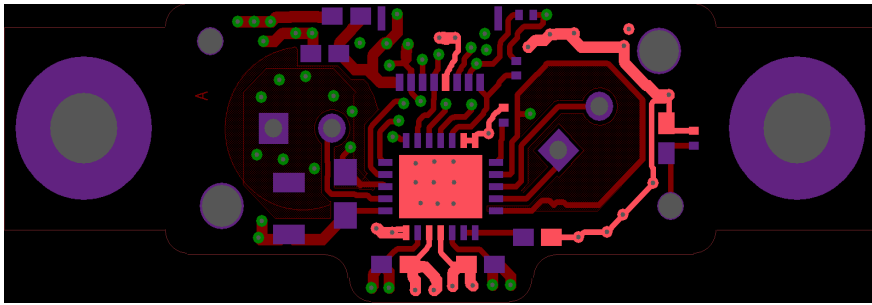


Figure 7. Layer 1

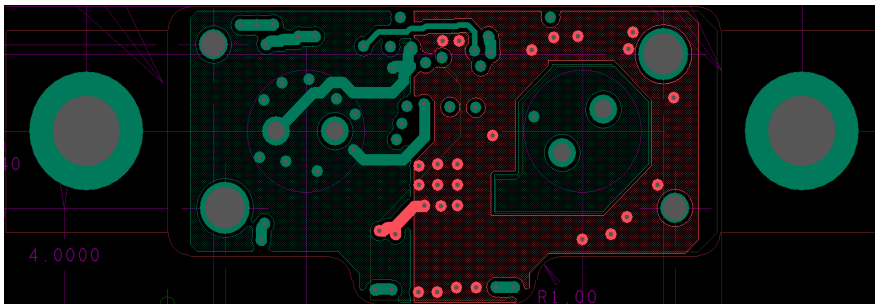


Figure 8. Layer 2

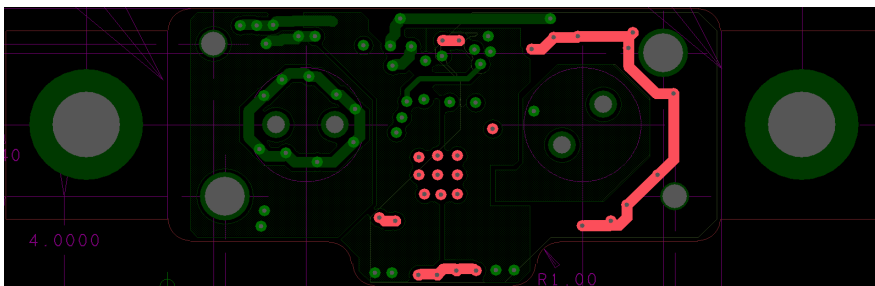


Figure 9. Layer 3

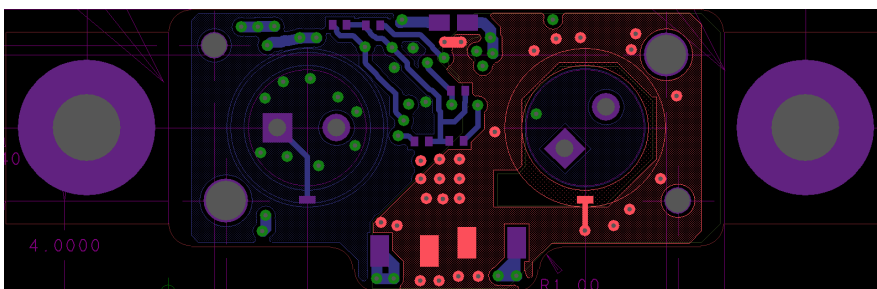


Figure 10. Layer 4

## 2.4.2 ISLI2UEV1Z PCB Layers

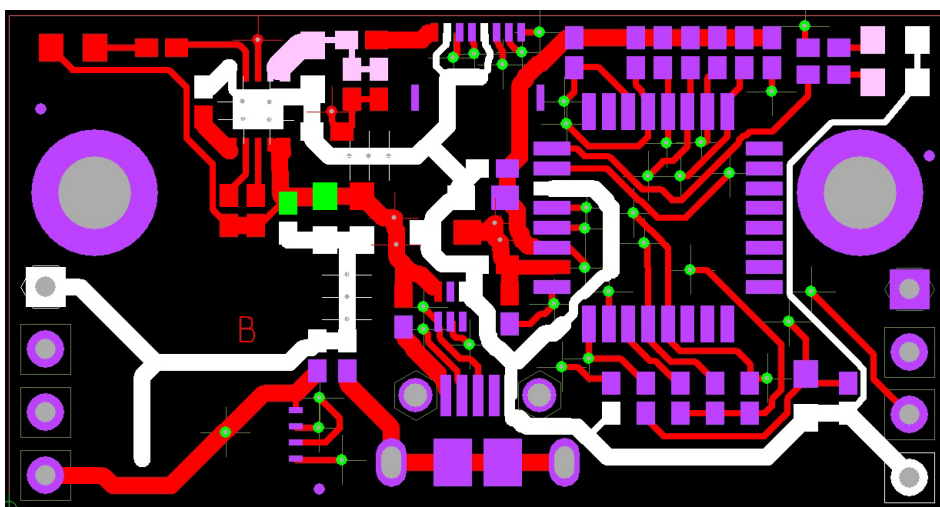


Figure 11. Layer 1 (Viewed from Top)

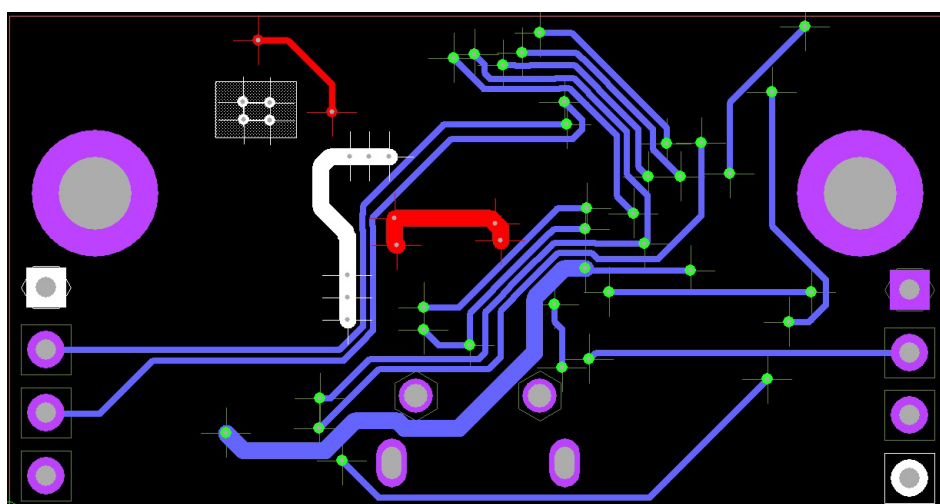


Figure 12. Layer 2 (Viewed from Top)

## 3. Ordering Information

| Part Number         | Description                       |
|---------------------|-----------------------------------|
| ISL29501-CS-EVKIT1Z | ISL29501 Cat Shark evaluation kit |

## 4. Revision History

| Revision | Date         | Description           |
|----------|--------------|-----------------------|
| 1.00     | Apr 5, 2022  | Applied new template. |
| 0.00     | Jun 27, 2016 | Initial release       |

## IMPORTANT NOTICE AND DISCLAIMER

RENESAS ELECTRONICS CORPORATION AND ITS SUBSIDIARIES (“RENESAS”) PROVIDES TECHNICAL SPECIFICATIONS AND RELIABILITY DATA (INCLUDING DATASHEETS), DESIGN RESOURCES (INCLUDING REFERENCE DESIGNS), APPLICATION OR OTHER DESIGN ADVICE, WEB TOOLS, SAFETY INFORMATION, AND OTHER RESOURCES “AS IS” AND WITH ALL FAULTS, AND DISCLAIMS ALL WARRANTIES, EXPRESS OR IMPLIED, INCLUDING, WITHOUT LIMITATION, ANY IMPLIED WARRANTIES OF MERCHANTABILITY, FITNESS FOR A PARTICULAR PURPOSE, OR NON-INFRINGEMENT OF THIRD PARTY INTELLECTUAL PROPERTY RIGHTS.

These resources are intended for developers skilled in the art designing with Renesas products. You are solely responsible for (1) selecting the appropriate products for your application, (2) designing, validating, and testing your application, and (3) ensuring your application meets applicable standards, and any other safety, security, or other requirements. These resources are subject to change without notice. Renesas grants you permission to use these resources only for development of an application that uses Renesas products. Other reproduction or use of these resources is strictly prohibited. No license is granted to any other Renesas intellectual property or to any third party intellectual property. Renesas disclaims responsibility for, and you will fully indemnify Renesas and its representatives against, any claims, damages, costs, losses, or liabilities arising out of your use of these resources. Renesas' products are provided only subject to Renesas' Terms and Conditions of Sale or other applicable terms agreed to in writing. No use of any Renesas resources expands or otherwise alters any applicable warranties or warranty disclaimers for these products.

(Rev.1.0 Mar 2020)

### Corporate Headquarters

TOYOSU FORESIA, 3-2-24 Toyosu,  
Koto-ku, Tokyo 135-0061, Japan  
[www.renesas.com](http://www.renesas.com)

### Contact Information

For further information on a product, technology, the most up-to-date version of a document, or your nearest sales office, please visit:  
[www.renesas.com/contact/](http://www.renesas.com/contact/)

### Trademarks

Renesas and the Renesas logo are trademarks of Renesas Electronics Corporation. All trademarks and registered trademarks are the property of their respective owners.