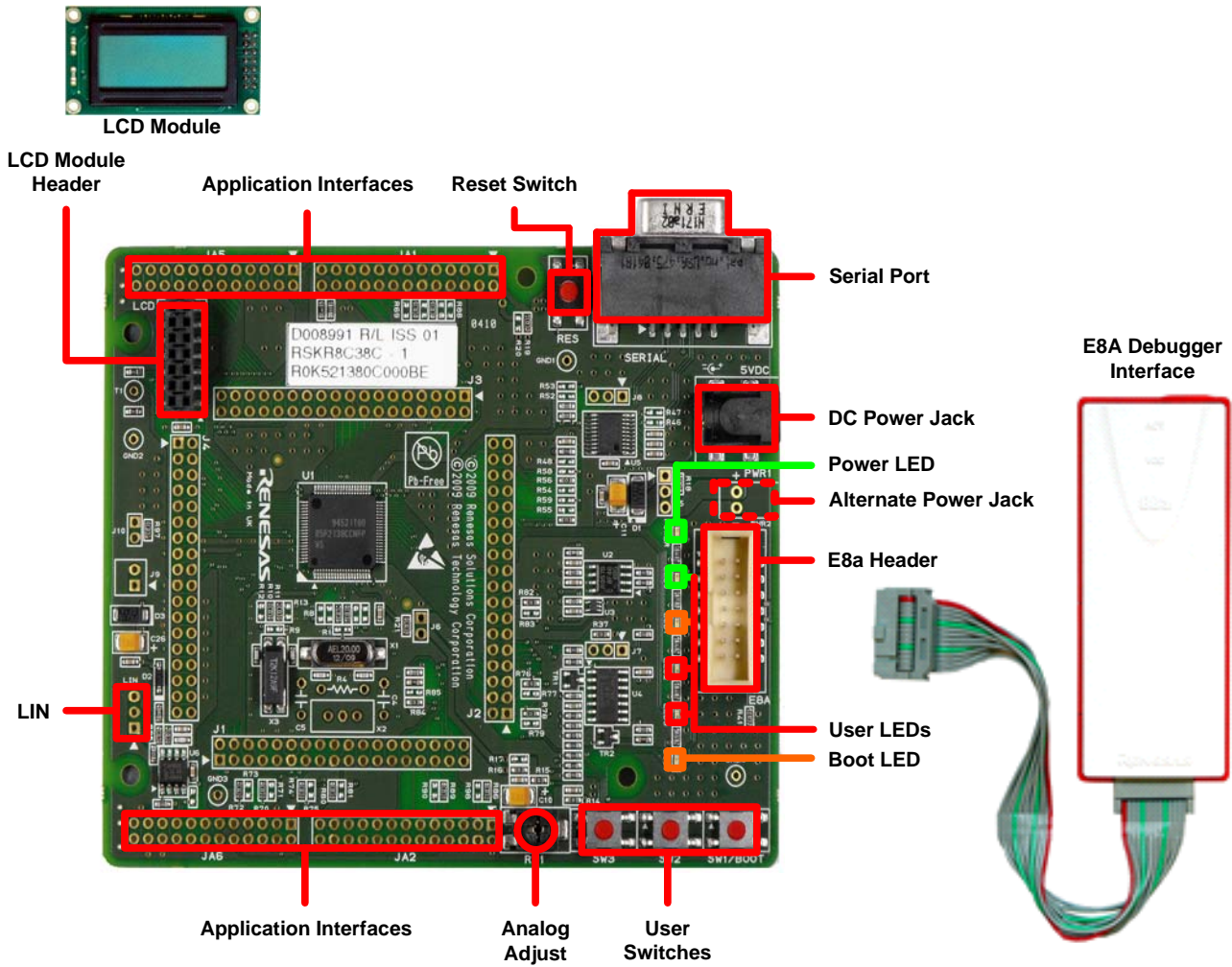


# Quick Start

## Renesas Starter Kit for R8C/38C



## 1. Installation

**Do not connect the E8a debugger module until the software support has been installed.**

1. Insert the CD into your computer's CD-ROM drive. The CD should automatically run the installation program. If the installer does not start, browse to the CD root folder and double click on 'setup.exe'.
2. Windows™ Vista users may see "User Account Control" dialog box. If applicable, enter the administrator password and click <OK>.
3. The installer will ask you which language is to be used, please choose the appropriate one and click <OK>.
4. On the first screen of the installer proper, click <Next>.
5. The License Agreement will be shown, read and click <Yes>.
6. The next screen asks you to pick the world region – please select and click <Next>.
7. The destination folders are specified on the next screens. It is recommended to accept the default settings. Click <Next> to continue.
8. Click <Next> on all screens until the Installation process commences.
9. After the completion of successful installation, click <Finish>.

## 2. Connection

10. Fit the LCD module to the connector marked 'LCD' on the RSK, so it lies above 'J3'. Ensure all the pins of the connector are correctly inserted in the socket.
11. Connect the E8a debugger module to the connector marked 'E8A' on the RSK using the ribbon cable.
12. Connect the E8a debugger module to a spare USB port of your PC.
13. The 'Found New Hardware' Wizard will appear. Please follow the steps below to install the drivers. Note that, administrator privileges are required for a Windows™ 2000/XP/Vista machine.

### Windows™ 2000/XP

- a. Select option 'No, not this time' in "Found New Hardware" Wizard dialog, and click <Next> button.
- b. Verify the "Recommended" option is selected and click <Next>.
- c. If using Windows™ XP, go to step 'e'; otherwise, click <Next>.
- d. Click <Next> to install the driver.
- e. Click <Finish> to close the wizard.

### Windows™ Vista

- a. Select "Locate and install driver software (recommended)".
- b. "User Account Control" dialog box will appear. If applicable, enter administrator password and click <OK>.
- c. Driver installation will start. After couple of minutes "Windows security" dialog box will appear, select "install this driver software anyway".
- d. "Device driver software installed successfully" pop-up will appear in the windows toolbar and installation will complete.

*Note: The Windows driver signing dialog may be displayed. Please accept the driver to continue.*

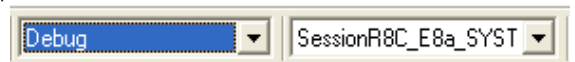
## 3. HEW Workspace

HEW integrates various tools such as compiler, assembler, debugger and editor into a common graphical user interface. To learn more on how to use HEW, open the HEW manual installed on your computer (Start Menu > All Programs > Renesas > High-performance Embedded Workshop > Manual Navigator)

14. Launch HEW from the Start Menu. (Start Menu > All Programs > Renesas > High-performance Embedded Workshop).
15. In the "Welcome" dialog box: Verify "Create New Workspace" is selected. Click <OK>
16. In the "New Project Workspace" dialog box: Set the "CPU Family" to "M16C", and verify the "Tool chain" is set to "Renesas M16C Standard". Select "RSKR8C38C" from the left hand pane.
17. Enter a name for the workspace. The project name will be automatically completed with the Workspace name. You can change this name to 'Tutorial' if required. Click <OK>.
18. On the "RSKR8C38C – Step 1" window: Select "Tutorial" and click <Next>.
19. On the "RSKR8C38C – Step 2" window: Click <Finish>.
20. On the Project Generator Information window: Click <OK>.

The project that is created has two configurations. The 'Release' configuration compiles the project without any debugger support and can be used for the final release code version. The 'Debug' configuration can be used to debug the user application.

21. Select the 'Debug' build configuration in the left hand drop down list on the tool bar.

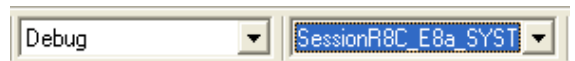


22. Click on the 'Build' icon to compile, assemble and link the project.



## 4. Programming and Debug

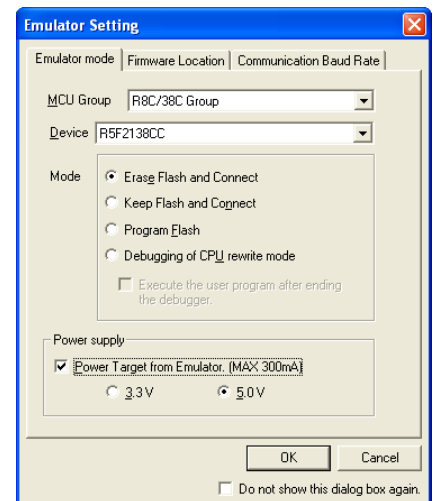
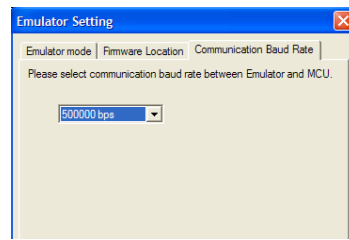
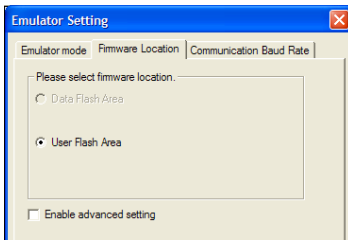
23. Ensure that 'SessionR8C\_E8a\_SYSTEM' session in the right hand drop down list on the tool bar is selected.



24. Click the <Connect> button on the 'debug' toolbar.



25. Select the correct MCU Group type (R8C/38C Group illustrated).
26. Select the correct device type (R5F2138CC as illustrated).
27. Select "Erase Flash and Connect".
28. If the E8a is to provide power to the CPU board, select "Power Target from Emulator" and choose the "5.0V" option. Otherwise connect a 5V centre positive supply.
29. Choose "User Flash Area" in "Firmware Location" tab.
30. Choose "500000bps" in "Communication Baud Rate" tab. Click <OK>.

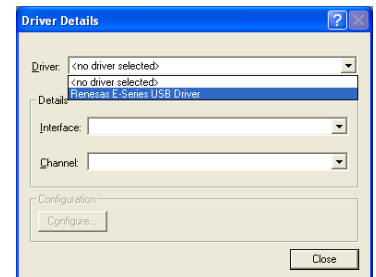


31. If this isn't the first time you've used the E8a emulator with the RSK, please skip to step 36.

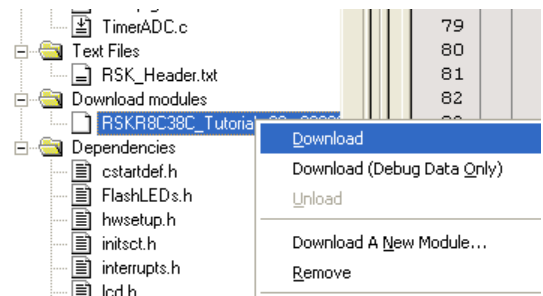
### First use of the E8a module

32. The 'Please choose driver' dialog will be shown. Click <OK>
33. The 'Driver Details' dialog will be shown, please select "Renesas E-Series USB Driver" as illustrated. The 'Interface' and 'Channel' items will be automatically populated. Click <Close>.
34. The Firmware setup dialog will be shown warning you not to disconnect the USB cable until the firmware download is complete. Click <OK>.
35. The firmware will be downloaded to the E8a module; this will take a few moments.

**Please do not disconnect the E8a from the host during download, doing so is likely to damage the E8a module.**



36. The flash memory write program is then downloaded to the microcontroller. The Output window in HEW will state 'Connected'
37. Right click on the download module listed in the left hand pane and select "Download". The code will be downloaded to the microcontroller.



38. Click the <Reset - Go> button.



You will see the LEDs flash on the board. Pressing any of the switches on the RSK will allow you to control the rate of flashing using the Analog Adjust control.

39. Click the <Halt> button.



The code will stop and the source code will be opened at the current program counter.

## 5. Next Step

After you have completed this quick start procedure, please review the tutorial code and sample code that came with the kit. You can add projects to the current workspace by selecting (Project > Insert Project) from the main menu. The tutorials will help you understand the device and development process using Renesas Development Tools.

The Hardware manual supplied with this RSK is current at the time of publication. Please check for any updates to the device manual from the Renesas internet site at: [www.renesas.com/renesas\\_starter\\_kits](http://www.renesas.com/renesas_starter_kits)

## 6. Renesas M16C Compiler

The version of the compiler provided with this RSK is fully functional but time limited. You have 60 days to evaluate the full product before the compiler will limit the code linker to 64K bytes. Full licensed M16C compiler versions are available from your Renesas supplier.

## 7. Support

Online technical support and information is available at: [www.renesas.com/renesas\\_starter\\_kits](http://www.renesas.com/renesas_starter_kits)

### Technical Contact Details

America: [techsupport.america@renesas.com](mailto:techsupport.america@renesas.com)

Europe: [tools.support.eu@renesas.com](mailto:tools.support.eu@renesas.com)

Japan: [csc@renesas.com](mailto:csc@renesas.com)

**Note on Autoupdate:** The Autoupdater is configured to automatically add itself to the Startup folder in the Windows Start Menu and use the registry defaults for access to the web. After restarting the machine the Icon will appear in the System Tray next to the clock. To change the settings or access Autoupdate, simply right-click on the icon and use the menu that appears.

© 2010 Renesas Electronics Europe Ltd. All rights reserved.

© 2010 Renesas Electronics Corporation. All rights reserved.

© 2010 Renesas Solutions Corporation. All rights reserved.

Website: [www.renesas.com](http://www.renesas.com)