

Operational Amplifiers

Closed-Loop Gain Error

Abstract

Engineers new to operational amplifier (op-amp) circuit design often attribute amplifier gain error purely to resistor tolerances, while ignoring the gain error caused by the op-amp. This can prove detrimental, as the gain error of the op-amp can be higher than the one due to resistor tolerances. Also, op-amp gain error is frequency dependent, which can cause signal distortions when amplifying input signals containing multiple frequency components.

This application note explains the impact of op-amp open-loop gain on the closed-loop gain error and derives equations for the following:

- Calculating the gain error for a given op-amp at a specific frequency
- Identifying the maximum signal frequency that can be amplified within a specified gain error
- Determining the minimum gain bandwidth of an op-amp, required to amplify a given signal frequency within a specified gain error.

Contents

1. Closed-Loop Gain Error as a Function of Open-Loop Gain for the Non-Inverting Amplifier	2
1.1 Calculation Examples	3
2. Closed-Loop Gain Error as a Function of Open-Loop Gain for the Inverting Amplifier	4
3. Closed-Loop Gain Error of the Non-Inverting and Inverting Amplifier for equal Closed-Loop Gain.	5
4. Conclusion	5
5. Revision History.	6

List of Figures

Figure 1. Non-Inverting Amplifier.	2
Figure 2. Frequency Responses of AOL and ACL	2
Figure 3. Inverting Amplifier	4
Figure 4. Ideal versus Actual Closed-Loop Gain.	5
Figure 5. Closed-Loop Gain Error over Frequency	5

1. Closed-Loop Gain Error as a Function of Open-Loop Gain for the Non-Inverting Amplifier

The gain error is defined as the deviation of the actual closed-loop gain of the amplifier from its ideal value. For example, the closed-loop gain, A_{CL} , or transfer function, V_O/V_I , of the non-inverting amplifier shown in [Figure 1](#) is:

$$(EQ. 1) \quad A_{CL} = \frac{1}{\beta} \cdot k_{Acc} \quad \text{with} \quad \frac{1}{\beta} = 1 + \frac{R_F}{R_G} \quad \text{and} \quad k_{Acc} = \frac{1}{1 + \frac{1}{A_{OL}\beta}}$$

Here, β is the feedback factor of the amplifier, and $1/\beta$ is the ideal closed-loop gain of the non-inverting amplifier for $A_{OL} = \infty$. The second factor, k_{Acc} , is the gain accuracy, which determines how close the actual closed-loop gain approaches the ideal value.

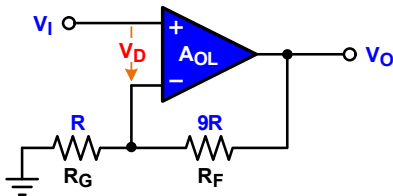


Figure 1. Non-Inverting Amplifier

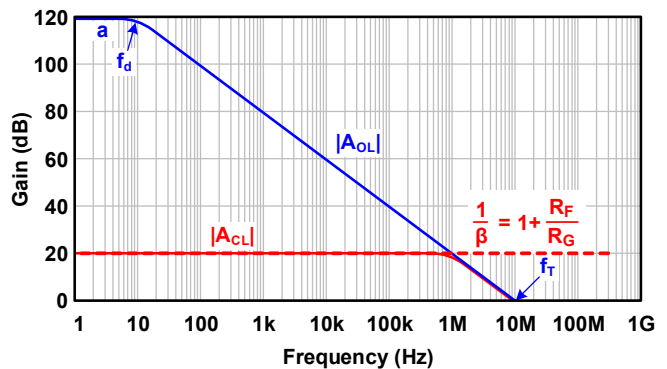


Figure 2. Frequency Responses of A_{OL} and A_{CL}

If A_{OL} were infinite (the ideal case), then A_{CL} would maintain its ideal value across the entire frequency range. This is shown as the dotted line in [Figure 2](#). Unfortunately, A_{CL} never reaches infinity. It has a very high value at DC up to the dominant pole, f_d , but then drops off at a rate of 20dB per decade of frequency, representing a typical low-pass characteristic:

$$(EQ. 2) \quad A_{OL} = \frac{V_O}{V_D} = \frac{a}{1 + j \frac{f}{f_d}}$$

Unfortunately, f_d is usually not specified in datasheets. Instead, the two most commonly specified parameters are the DC open-loop gain, a , and the gain-bandwidth of the op-amp, f_T . During the A_{OL} roll off, the gain-bandwidth is constant and $a \cdot f_d = f_T$. Then, substituting f_d in [Equation 2](#) with $f_d = f_T/a$ gives [Equation 3](#):

$$(EQ. 3) \quad A_{OL} = \frac{a}{1 + j \frac{a \cdot f}{f_T}}$$

This equation describes the frequency response of $|A_{OL}|$ purely based on datasheet parameters.

Because the frequency dependent A_{OL} appears in the k_{Acc} term, this makes the gain accuracy also frequency dependent. Therefore, with decreasing open-loop gain, the gain accuracy also decreases. This decrease can be observed in the Bode plot of [Figure 2](#), which depicts the magnitude functions of A_{OL} and A_{CL} . At the frequency, where $1/\beta$ crosses A_{OL} , the gain accuracy is only 0.707, which represents a -3dB drop of A_{CL} from $1/\beta$. This frequency is also known as the signal bandwidth of the amplifier.

With the gain error being defined as the difference between one and the gain accuracy magnitude shown in [Equation 4](#):

$$(EQ. 4) \quad |E_G| = 1 - |k_{Acc}|$$

the gain error at the -3dB frequency is $E_G = 1 - 0.707 = 0.293$, or 29.3%. Although not clearly visible in the Bode plot of [Figure 2 on page 2](#), E_G gradually increases with frequency.

Inserting [Equation 3](#) into the k_{Acc} term of [Equation 1](#) results in the complex and frequency dependent gain accuracy:

$$k_{Acc} = \frac{1}{1 + \frac{1}{a \cdot \beta} + j \frac{f}{f_T \cdot \beta}}, \text{ whose magnitude function is: } |k_{Acc}| = \frac{1}{\sqrt{\left(1 + \frac{1}{a \cdot \beta}\right)^2 + \left(\frac{f}{f_T \cdot \beta}\right)^2}}$$

Inserting $|k_{Acc}|$ into [Equation 4](#) provides the frequency dependent gain error function with:

$$(EQ. 5) \quad |E_G| = 1 - \frac{1}{\sqrt{\left(1 + \frac{1}{a \cdot \beta}\right)^2 + \left(\frac{f}{f_T \cdot \beta}\right)^2}}$$

Based on the op-amp datasheet parameters a and f_T and the ideal gain of the amplifier circuit, $1/\beta$, the closed-loop gain error can be calculated for individual frequencies.

1.1 Calculation Examples

[Figures 1](#) and [2](#) depict the DC open-loop gain and gain bandwidth of the op-amp with $a = 120\text{dB}$ (10^6 V/V) and $f_T = 10\text{MHz}$ respectively, and the ideal closed-loop gain of the non-inverting amplifier with $1/\beta = 10\text{V/V}$.

You can assume that this wide-band op-amp would amplify a 500kHz input sinewave with a relatively small gain error of less than 1%. However, applying [Equation 5](#) results in a rather high gain error of 10.6%.

$$E_G = 1 - \frac{1}{\sqrt{\left(1 + \frac{1}{a \cdot \beta}\right)^2 + \left(\frac{f}{f_T \cdot \beta}\right)^2}} = 1 - \frac{1}{\sqrt{\left(1 + \frac{10\text{V/V}}{10^6 \text{ V/V}}\right)^2 + \left(\frac{500\text{kHz} \cdot 10\text{V/V}}{10\text{MHz}}\right)^2}} = 0.106 \text{ or } 10.6\%$$

To determine the maximum signal frequency, f_{max} , this op-amp can amplify with a gain error of $E_G \leq 0.1\%$, [Equation 5](#) is solved for f and the index *max* added:

$$(EQ. 6) \quad f_{max} \leq f_T \cdot \beta \cdot \sqrt{\left(\frac{1}{1 - E_{G_{max}}}\right)^2 - \left(1 + \frac{1}{a \cdot \beta}\right)^2}$$

Inserting the desired gain error limit then yields a maximum signal frequency of:

$$f_{max} \leq \frac{10\text{MHz}}{10\text{V/V}} \sqrt{\left(\frac{1}{1 - 0.001}\right)^2 - \left(1 + \frac{10\text{V/V}}{10^6 \text{ V/V}}\right)^2} = 44.5\text{kHz}$$

The maximum signal frequency is an astonishingly narrow frequency band that can be amplified with less than 0.1% gain error.

To find the minimum gain bandwidth, $f_{T\text{-min}}$, of an op-amp that amplifies the 500kHz sinewave with maximum 0.1% gain error, [Equation 5](#) is solved for f_T and the index min added:

$$(EQ. 7) \quad f_{T\text{min}} \geq \frac{1}{\beta} \cdot \frac{f}{\sqrt{\left(\frac{1}{1-E_{G\text{max}}}\right)^2 - \left(1 + \frac{1}{a \cdot \beta}\right)^2}}$$

Inserting the desired gain error and signal frequency limits requires a minimum gain bandwidth of:

$$f_{T\text{min}} \geq \frac{10\text{V/V} \cdot 500\text{kHz}}{\sqrt{\left(\frac{1}{1-10^{-3}}\right)^2 - \left(1 + \frac{10\text{V/V}}{10^6\text{V/V}}\right)^2}} = 112\text{MHz}$$

The minimum gain bandwidth is an impressively high gain bandwidth, needed to amplify frequencies up to 500kHz with less than 0.1% gain error.

When amplifying a wide-band signal, some designers consider the use of Current Feedback (CFB) op-amps. While these amplifiers provide the necessary bandwidth, they lack however in DC-precision, such as DC open-loop gain.

2. Closed-Loop Gain Error as a Function of Open-Loop Gain for the Inverting Amplifier

The closed-loop gain of the inverting amplifier in [Figure 3](#) is:

$$(EQ. 8) \quad A_{CL} = -\left(\frac{1}{\beta} - 1\right) \cdot \frac{1}{1 + \frac{1}{A_{OL}\beta}} = -\left(\frac{1}{\beta} - 1\right) \cdot k_{Acc}$$

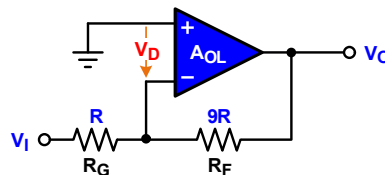


Figure 3. Inverting Amplifier

[Equation 8](#) shows that the ideal closed loop gain is 1V/V less than that of the non-inverting amplifier, the gain accuracy however, is the same.

Note: For the same feedback factor, the gain errors of the inverting and non-inverting amplifier configurations are identical.

3. Closed-Loop Gain Error of the Non-Inverting and Inverting Amplifier for equal Closed-Loop Gain

Matching the DC gain of an inverting amplifier with that of a non-inverting amplifier, requires the increase of the R_F value in the inverting amplifier's feedback path, so that:

$$\frac{R_{F(\text{inv})}}{R_G} = 1 + \frac{R_{F(\text{nin})}}{R_G}$$

With the indices (inv) and (nin) indicating the inverting and non-inverting configurations. Solving for $R_{F(\text{inv})}$ gives: $R_{F(\text{inv})} = R_{F(\text{nin})} + R_G$. This of course changes the feedback factor of the non-inverting amplifier. Comparing both feedback factors shows:

$$\beta_{\text{nin}} = \frac{R_G}{R_{F(\text{nin})} + R_G} \text{ for the non-inverting and } \beta_{\text{inv}} = \frac{R_G}{R_{F(\text{nin})} + 2R_G} \text{ for the inverting configuration.}$$

Inserting these feedback factors into the gain error equations shows their difference in gain accuracy and hence, gain error:

$$\left| E_{G(\text{nin})} \right| = 1 - \frac{1}{\sqrt{\left(1 + \frac{1}{a} \cdot \frac{1}{\beta_{\text{nin}}} \right)^2 + \left(\frac{f}{f_T} \cdot \frac{1}{\beta_{\text{nin}}} \right)^2}}$$

and

$$\left| E_{G(\text{inv})} \right| = 1 - \frac{1}{\sqrt{\left[1 + \frac{1}{a} \cdot \left(\frac{1}{\beta_{\text{nin}}} + 1 \right) \right]^2 + \left[\frac{f}{f_T} \cdot \left(\frac{1}{\beta_{\text{nin}}} + 1 \right) \right]^2}}$$

For the inverting amplifier, the denominator of the gain accuracy term increases; therefore, lowering the gain accuracy and in turn, increasing the gain error, when compared to the non-inverting case.

Note: For equal closed-loop gain, the gain error of the inverting amplifier is larger than that of the non-inverting amplifier.

4. Conclusion

Precision amplifiers allow for closed-loop gain errors in the range of 10^{-4} to 10^{-3} V/V, or 0.01 to 0.1%. This gain error is due to the open-loop gain roll off of the op-amp and occurs far below the -3dB frequency of the amplifier's closed-loop gain. [Figure 4](#) shows a comparison between the actual closed-loop gain, A_{CL} , and the ideal closed loop gain, A_{CLi} .

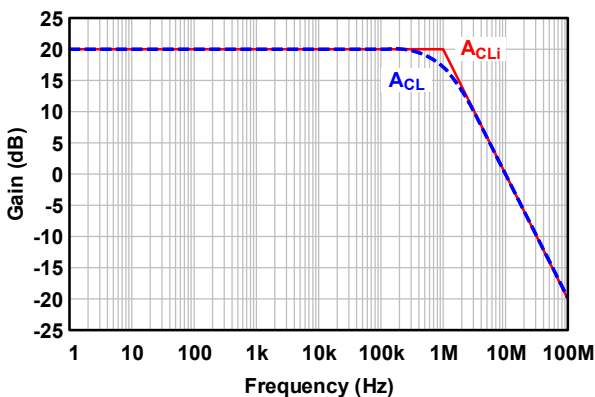


Figure 4. Ideal versus Actual Closed-Loop Gain

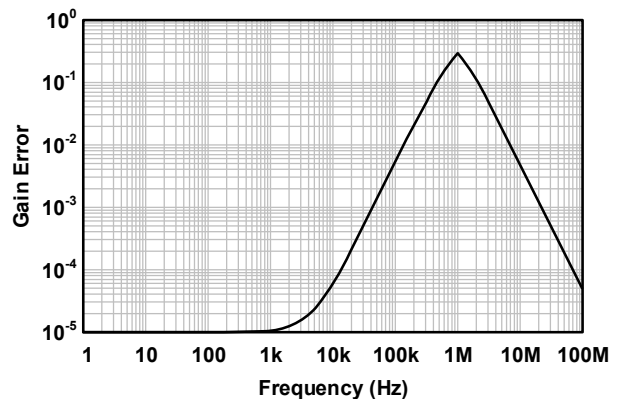


Figure 5. Closed-Loop Gain Error over Frequency

It becomes obvious that small gain errors cannot be identified from a Bode plot. However, this application note has shown that significant gain errors affecting precision performance already occur far below the -3dB frequency

of the amplifier's closed-loop gain ([Figure 5 on page 5](#)). Therefore, to minimize gain error over a wide signal bandwidth, the use of op-amps with high gain-bandwidth is required.

With regards to the size of the gain error for different amplifier configurations, it showed the following:

- For equal feedback factors, the gain errors of the inverting and noninverting configurations are the same.
- For equal closed-loop gains, the gain error of the inverting amplifier is larger than that of the noninverting amplifier.

5. Revision History

Rev.	Date	Description
1.00	Aug.15.19	Initial release

Notice

1. Descriptions of circuits, software and other related information in this document are provided only to illustrate the operation of semiconductor products and application examples. You are fully responsible for the incorporation or any other use of the circuits, software, and information in the design of your product or system. Renesas Electronics disclaims any and all liability for any losses and damages incurred by you or third parties arising from the use of these circuits, software, or information.
2. Renesas Electronics hereby expressly disclaims any warranties against and liability for infringement or any other claims involving patents, copyrights, or other intellectual property rights of third parties, by or arising from the use of Renesas Electronics products or technical information described in this document, including but not limited to, the product data, drawings, charts, programs, algorithms, and application examples.
3. No license, express, implied or otherwise, is granted hereby under any patents, copyrights or other intellectual property rights of Renesas Electronics or others.
4. You shall not alter, modify, copy, or reverse engineer any Renesas Electronics product, whether in whole or in part. Renesas Electronics disclaims any and all liability for any losses or damages incurred by you or third parties arising from such alteration, modification, copying or reverse engineering.
5. Renesas Electronics products are classified according to the following two quality grades: "Standard" and "High Quality". The intended applications for each Renesas Electronics product depends on the product's quality grade, as indicated below.
 - "Standard": Computers; office equipment; communications equipment; test and measurement equipment; audio and visual equipment; home electronic appliances; machine tools; personal electronic equipment; industrial robots; etc.
 - "High Quality": Transportation equipment (automobiles, trains, ships, etc.); traffic control (traffic lights); large-scale communication equipment; key financial terminal systems; safety control equipment; etc.Unless expressly designated as a high reliability product or a product for harsh environments in a Renesas Electronics data sheet or other Renesas Electronics document, Renesas Electronics products are not intended or authorized for use in products or systems that may pose a direct threat to human life or bodily injury (artificial life support devices or systems; surgical implantations; etc.), or may cause serious property damage (space system; undersea repeaters; nuclear power control systems; aircraft control systems; key plant systems; military equipment; etc.). Renesas Electronics disclaims any and all liability for any damages or losses incurred by you or any third parties arising from the use of any Renesas Electronics product that is inconsistent with any Renesas Electronics data sheet, user's manual or other Renesas Electronics document.
6. When using Renesas Electronics products, refer to the latest product information (data sheets, user's manuals, application notes, "General Notes for Handling and Using Semiconductor Devices" in the reliability handbook, etc.), and ensure that usage conditions are within the ranges specified by Renesas Electronics with respect to maximum ratings, operating power supply voltage range, heat dissipation characteristics, installation, etc. Renesas Electronics disclaims any and all liability for any malfunctions, failure or accident arising out of the use of Renesas Electronics products outside of such specified ranges.
7. Although Renesas Electronics endeavors to improve the quality and reliability of Renesas Electronics products, semiconductor products have specific characteristics, such as the occurrence of failure at a certain rate and malfunctions under certain use conditions. Unless designated as a high reliability product or a product for harsh environments in a Renesas Electronics data sheet or other Renesas Electronics document, Renesas Electronics products are not subject to radiation resistance design. You are responsible for implementing safety measures to guard against the possibility of bodily injury, injury or damage caused by fire, and/or danger to the public in the event of a failure or malfunction of Renesas Electronics products, such as safety design for hardware and software, including but not limited to redundancy, fire control and malfunction prevention, appropriate treatment for aging degradation or any other appropriate measures. Because the evaluation of microcomputer software alone is very difficult and impractical, you are responsible for evaluating the safety of the final products or systems manufactured by you.
8. Please contact a Renesas Electronics sales office for details as to environmental matters such as the environmental compatibility of each Renesas Electronics product. You are responsible for carefully and sufficiently investigating applicable laws and regulations that regulate the inclusion or use of controlled substances, including without limitation, the EU RoHS Directive, and using Renesas Electronics products in compliance with all these applicable laws and regulations. Renesas Electronics disclaims any and all liability for damages or losses occurring as a result of your noncompliance with applicable laws and regulations.
9. Renesas Electronics products and technologies shall not be used for or incorporated into any products or systems whose manufacture, use, or sale is prohibited under any applicable domestic or foreign laws or regulations. You shall comply with any applicable export control laws and regulations promulgated and administered by the governments of any countries asserting jurisdiction over the parties or transactions.
10. It is the responsibility of the buyer or distributor of Renesas Electronics products, or any other party who distributes, disposes of, or otherwise sells or transfers the product to a third party, to notify such third party in advance of the contents and conditions set forth in this document.
11. This document shall not be reprinted, reproduced or duplicated in any form, in whole or in part, without prior written consent of Renesas Electronics.
12. Please contact a Renesas Electronics sales office if you have any questions regarding the information contained in this document or Renesas Electronics products.

(Note1) "Renesas Electronics" as used in this document means Renesas Electronics Corporation and also includes its directly or indirectly controlled subsidiaries.

(Note2) "Renesas Electronics product(s)" means any product developed or manufactured by or for Renesas Electronics.

(Rev.4.0-1 November 2017)

Corporate Headquarters

TOYOSU FORESIA, 3-2-24 Toyosu,
Koto-ku, Tokyo 135-0061, Japan
www.renesas.com

Contact Information

For further information on a product, technology, the most up-to-date version of a document, or your nearest sales office, please visit:
www.renesas.com/contact/

Trademarks

Renesas and the Renesas logo are trademarks of Renesas Electronics Corporation. All trademarks and registered trademarks are the property of their respective owners.