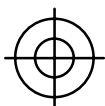
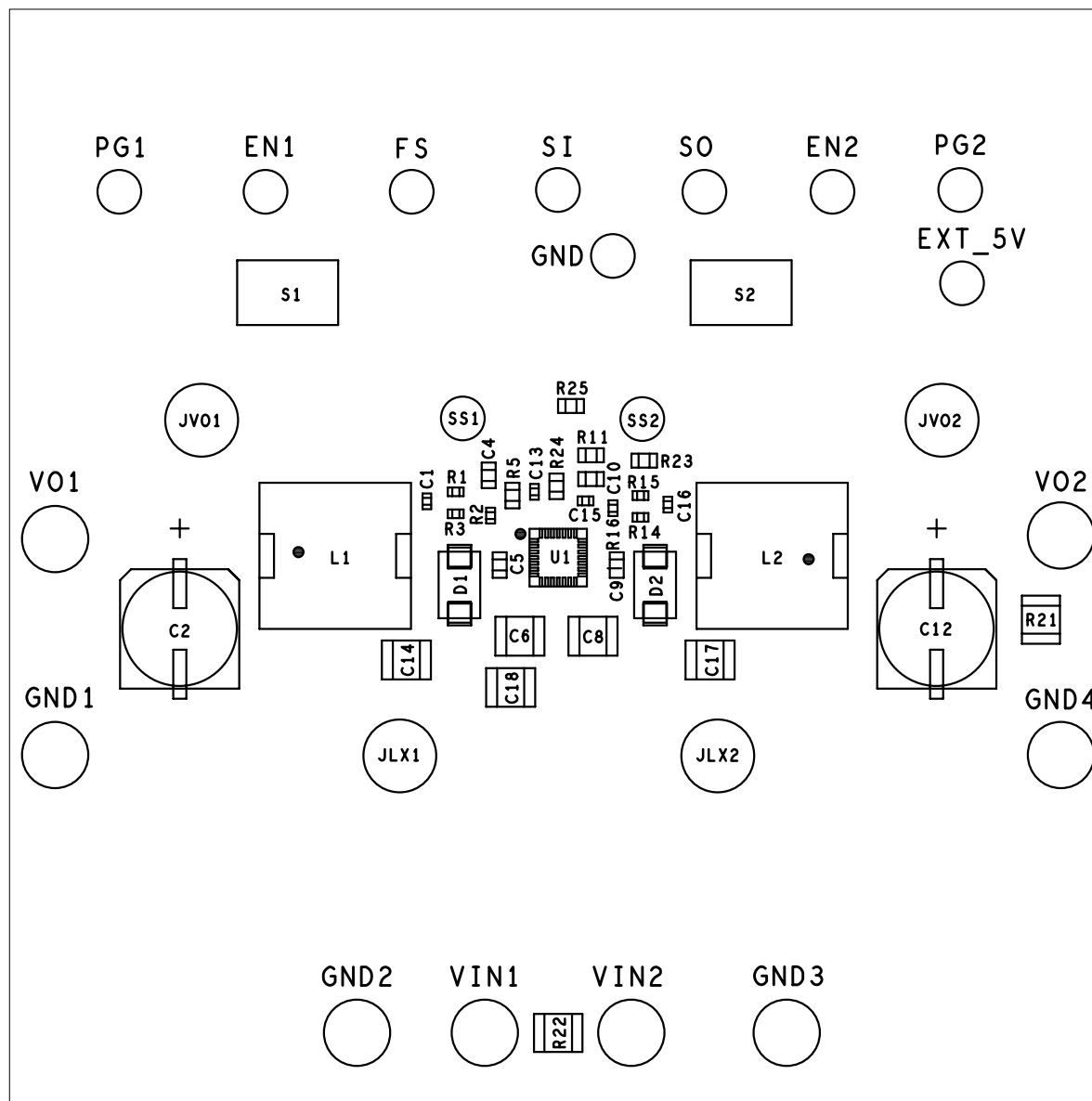
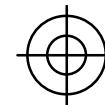
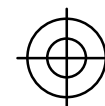
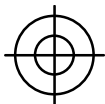


ISL85033EVAL1Z REV.B

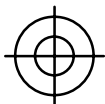
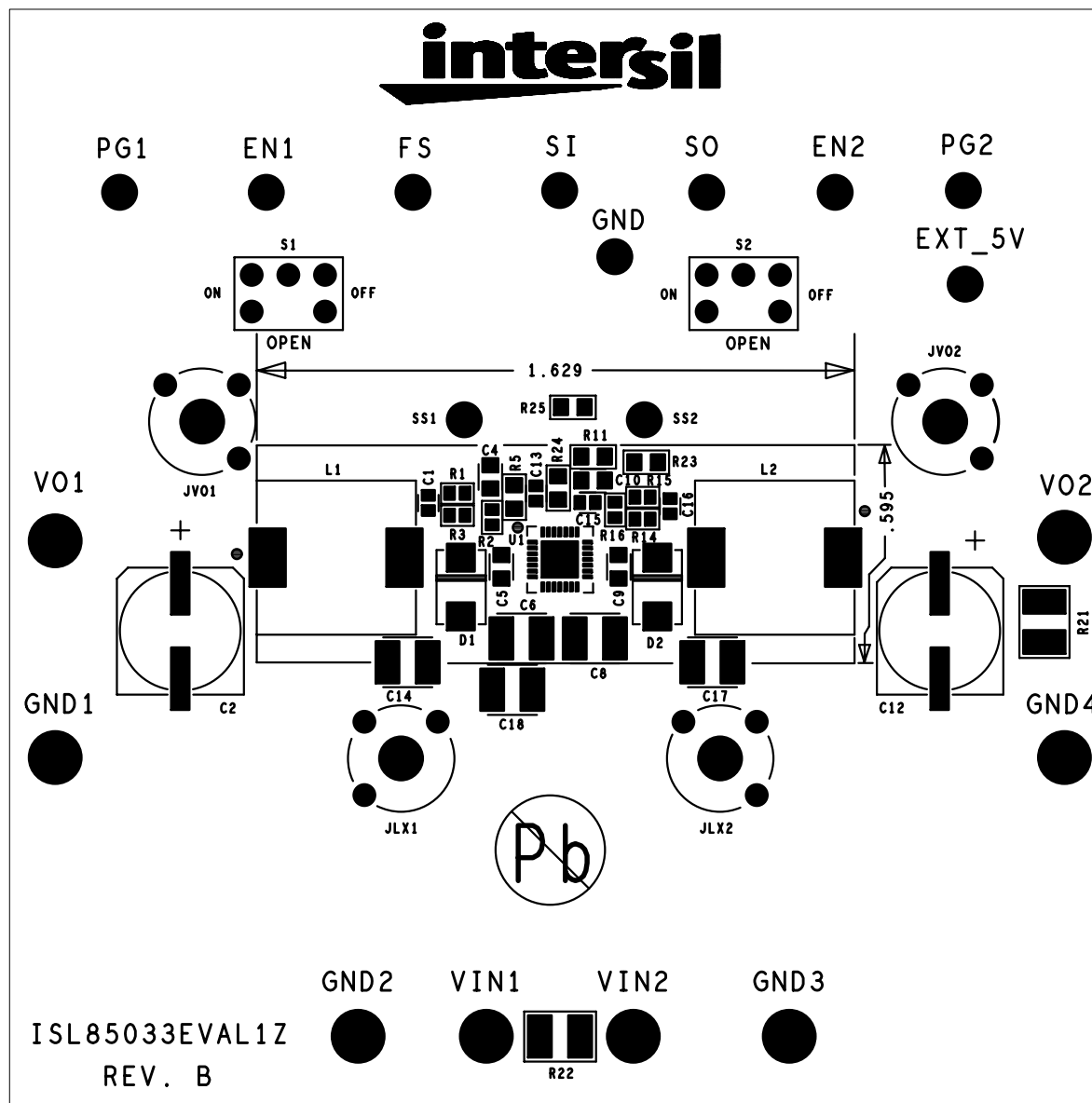
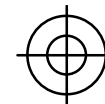


ASSEMBLY TOP
INTERSIL CORPORATION
06-17-2009





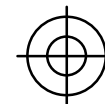
ISL85033EVAL1Z REV.B



SILK SCREEN TOP

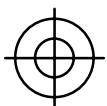
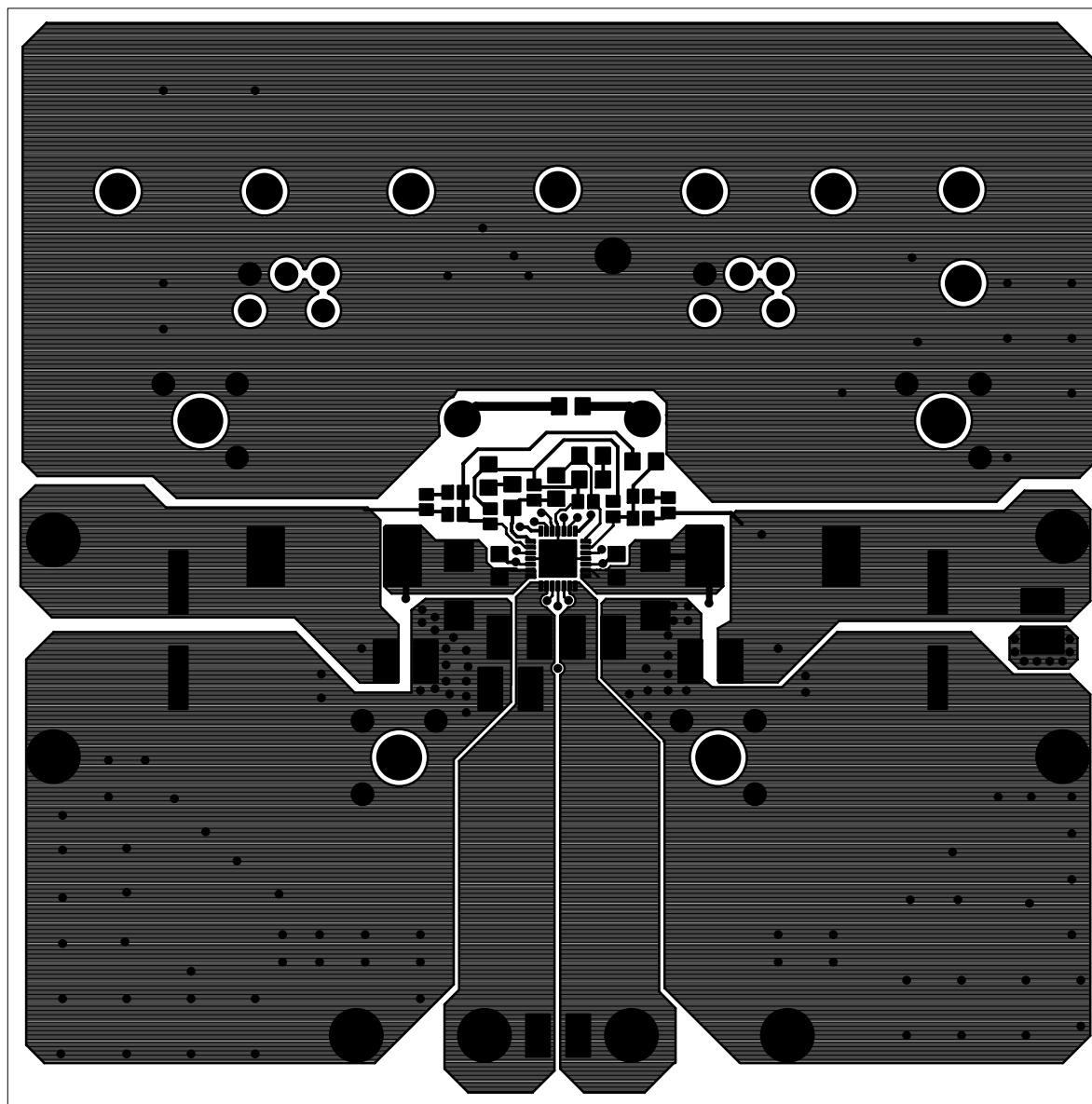
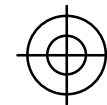
INTERSIL CORPORATION

06-17-2009





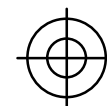
ISL85033EVAL1Z REV.B



TOP LAYER COMPONENT SIDE

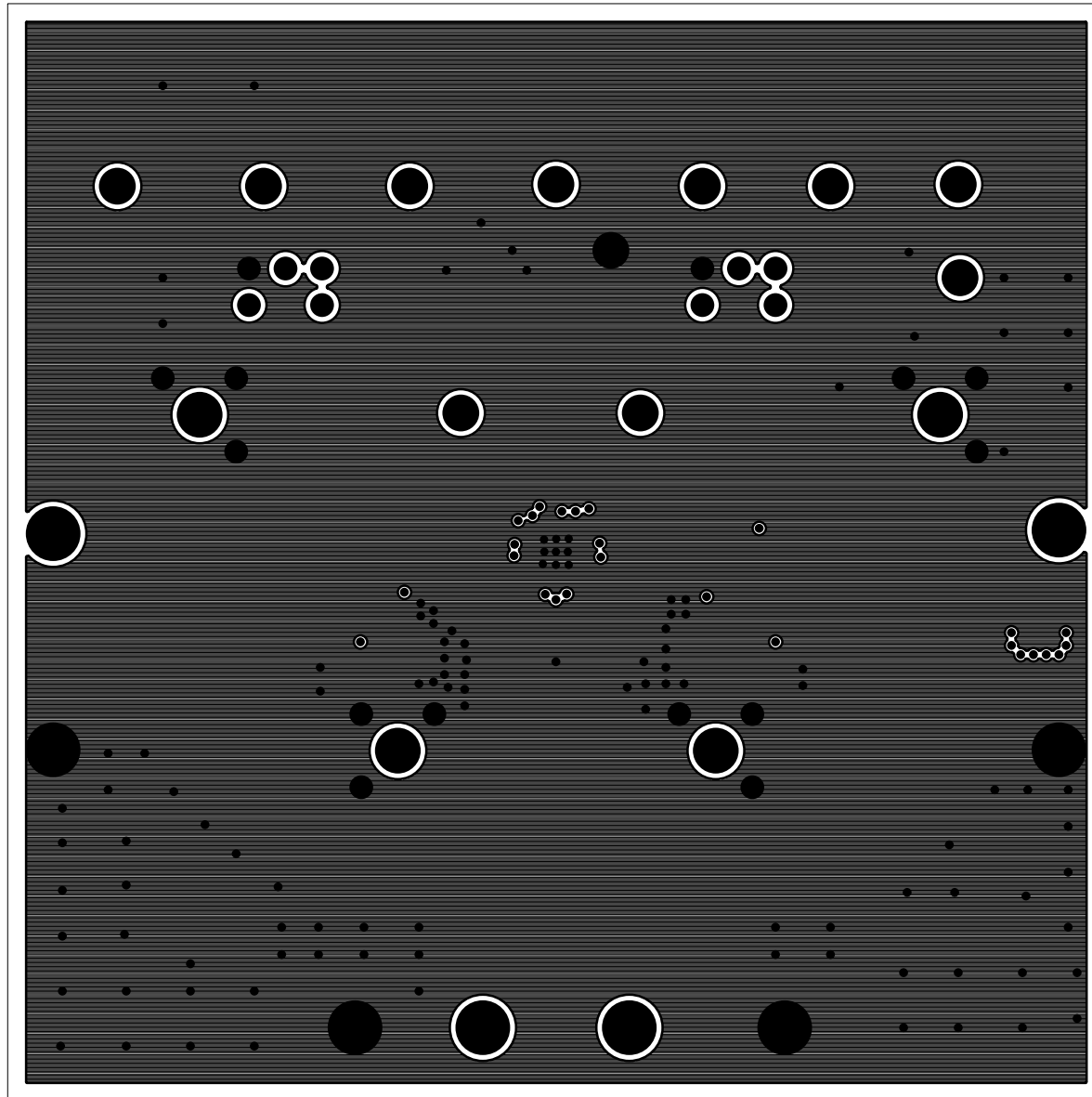
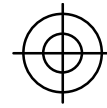
INTERSIL CORPORATION

06-17-2009





ISL85033EVAL1Z REV.B

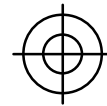


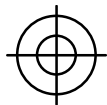
LAYER 2



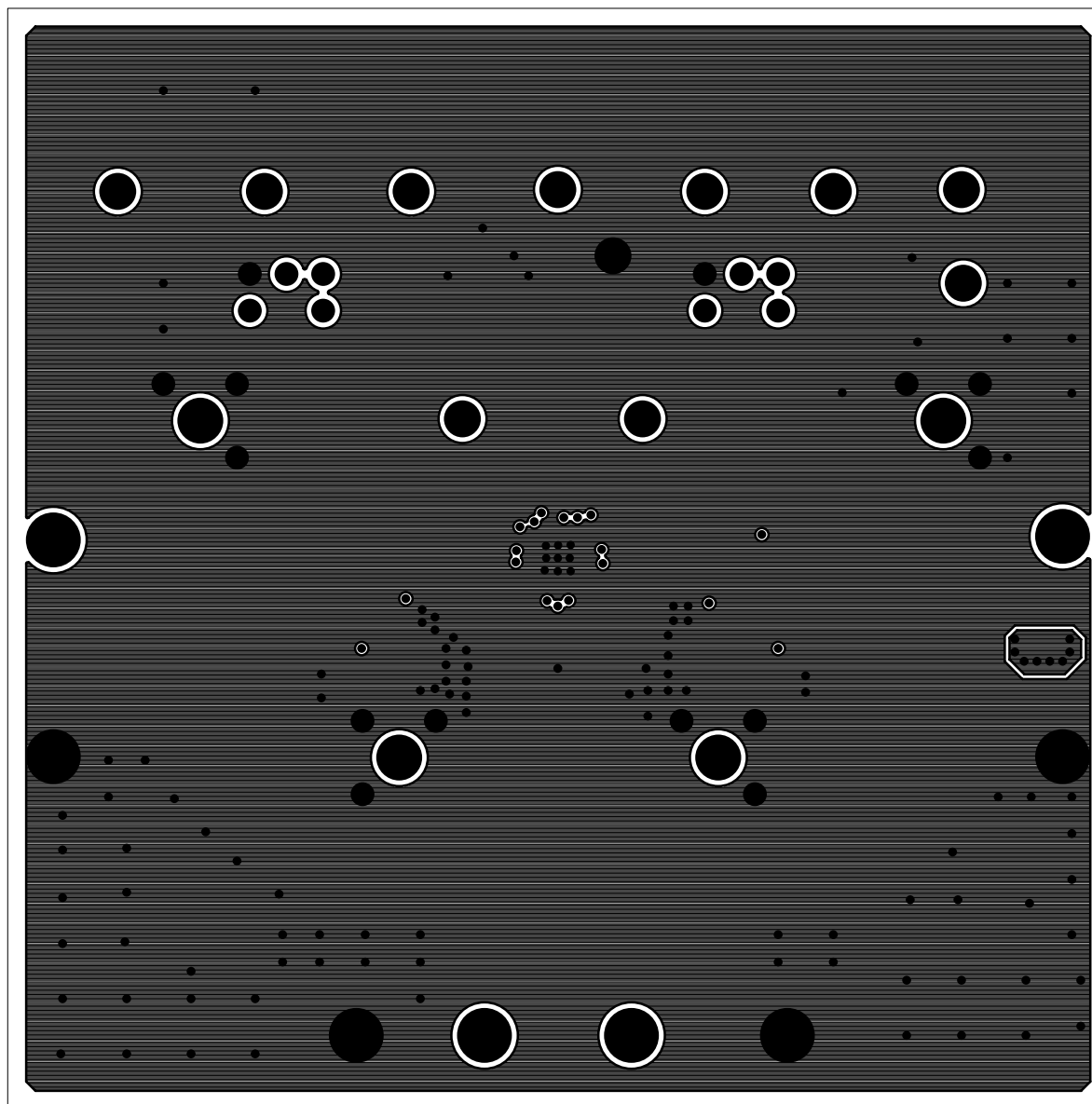
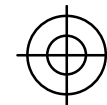
INTERSIL CORPORATION

06-17-2009

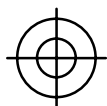




ISL85033EVAL1Z REV.B

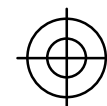


LAYER 3



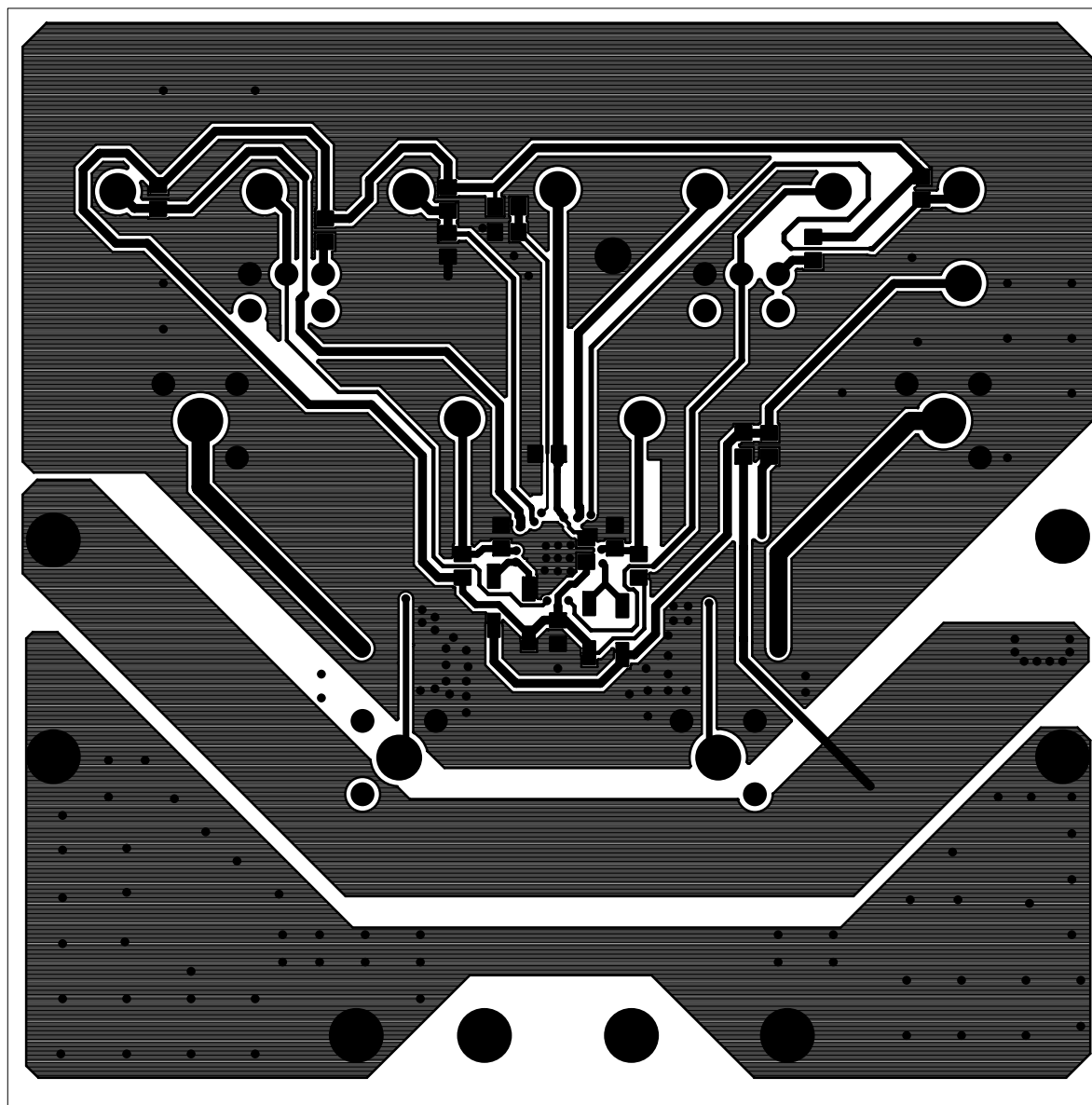
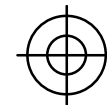
INTERSIL CORPORATION

06-17-2009





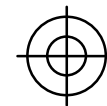
ISL85033EVAL1Z REV.B

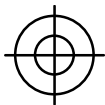


BOTTOM LAYER SOLDER SIDE

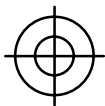
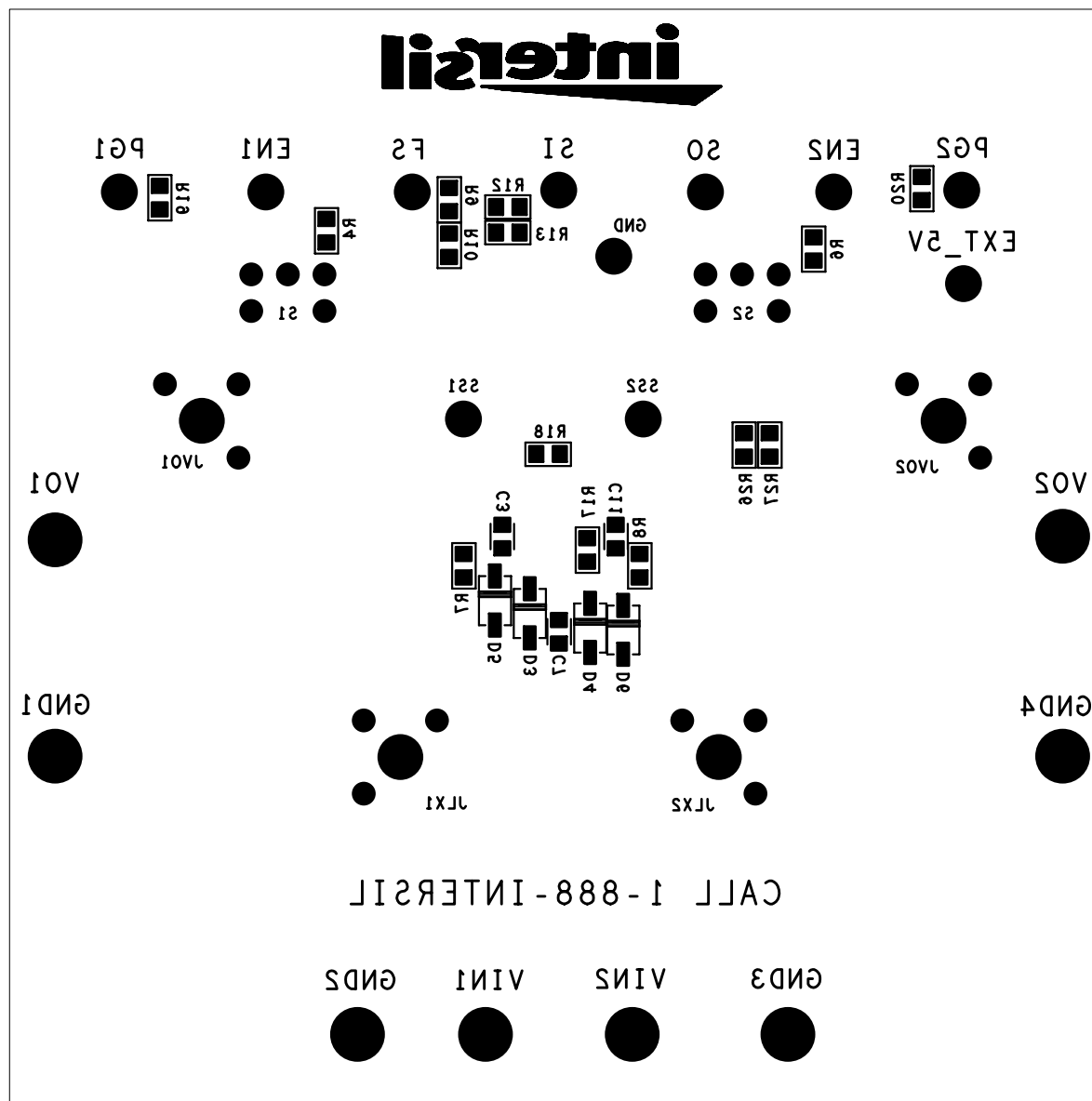
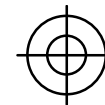
INTERSIL CORPORATION

06-17-2009

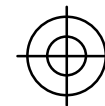




ISL85033EVAL1Z REV.B

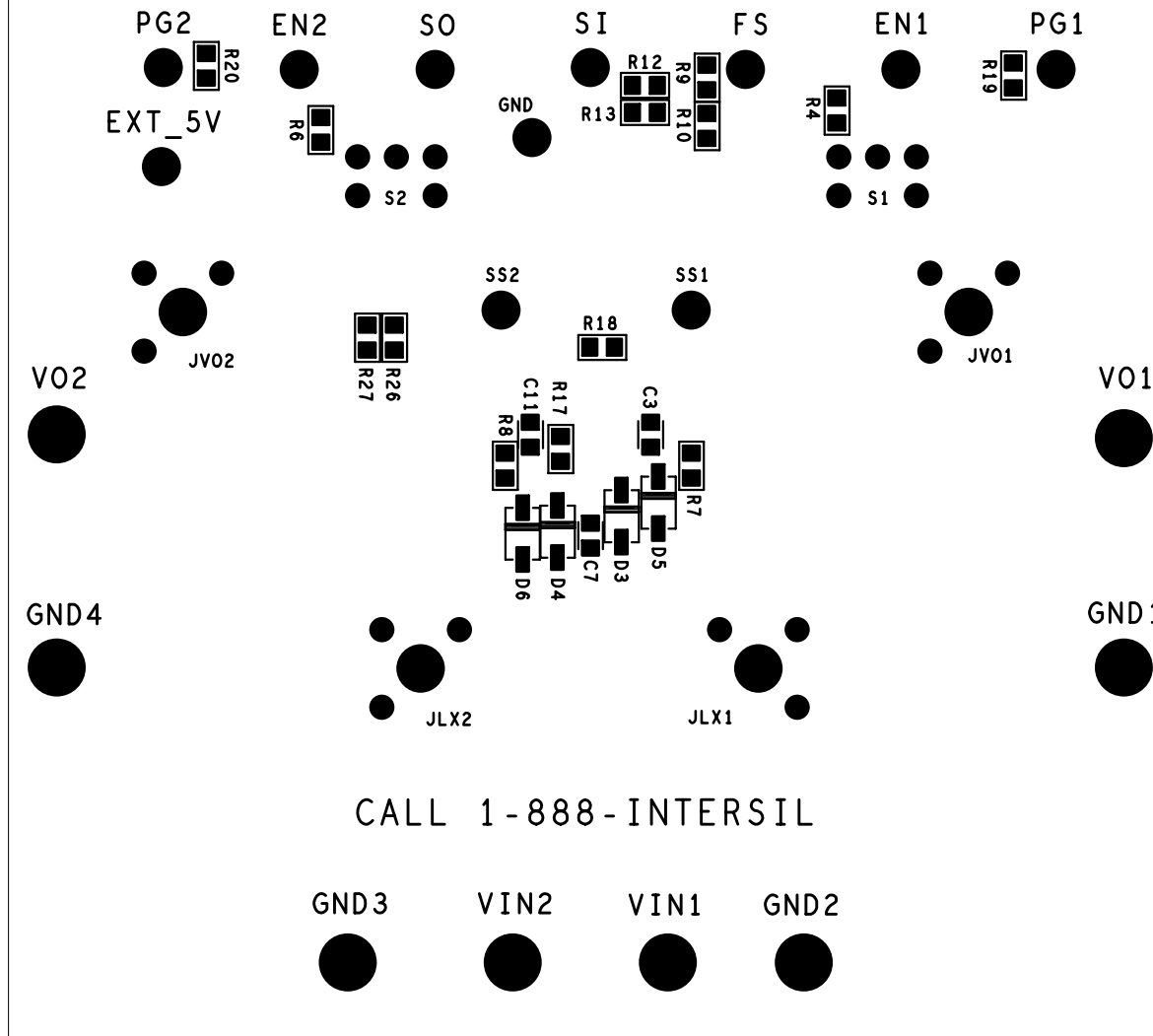


SILK SCREEN BOTTOM
INTERMIL CORPORATION
06-17-2009



I2L82033EVAL15 REV.B

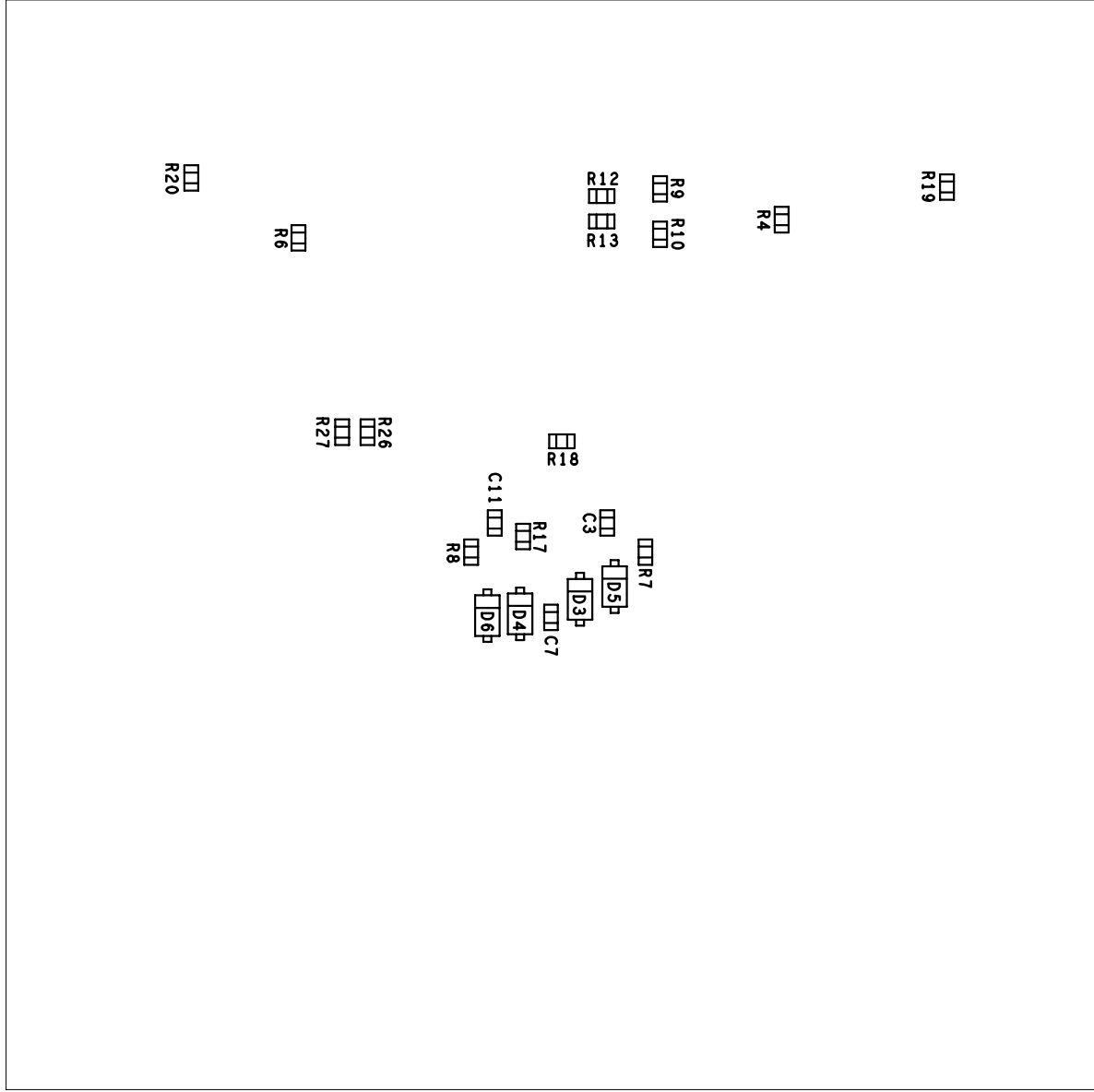
intersil



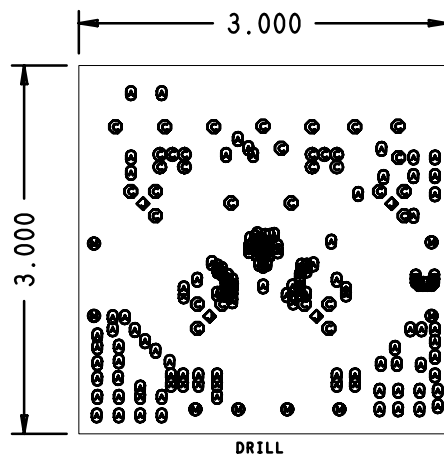
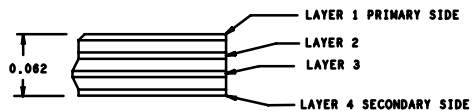
CALL 1-888-INTERSIL

INTERSil CORPORATION
06-17-2009
SILK SCREEN BOTTOM

06-17-5009
INTERCIL CORPORATION
ASSEMBLY BOTTOM



I2L82033EVAL15 REV.B



DRILL CHART: TOP to BOTTOM			
ALL UNITS ARE IN MILS			
FIGURE	SIZE	PLATED	QTY
12.0	12.0	PLATED	9
14.0	14.0	PLATED	131
35.0	35.0	PLATED	10
37.0	37.0	PLATED	23
93.0	93.0	PLATED	4
110.0	110.0	PLATED	8

- NOTES:
1. THIS BOARD IS RoHS COMPLIANT.
 2. PRINTED WIRING BOARD DESIGN AND ACCEPTANCE CRITERIA SHALL BE IAW WITH THE REQUIREMENTS OF IPC-D-275 AND IPC-A-600.
 3. MATERIAL: FR4 (RoHS COMPLIANT), 2 OZ COPPER.
 4. APPLY SOLDER MASK, BOTH SIDES OVER BARE COPPER IAW IPC-SM-840. CLASS 2 (LPI) (BLUE MASK).
 5. ALL PATTERNS ARE VIEWED FROM THE PRIMARY SIDE LOOKING THROUGH THE BOARD.
 6. UNLESS OTHERWISE SPECIFIED ALL HOLE DIAMETERS ARE AFTER PLATING.
 7. APPLY SILKSCREEN USING WHITE NON-CONDUCTIVE EPOXY BASED INK.
 8. PWB MUST BE 100% ELECTRICALLY TESTED FOR SHORTS AND CONTINUITY. USE NETLIST PROVIDED ISL85033EVAL1Z_IPC356.IPC IAW IPC-D-356.
 9. MARK DATE CODE AND MANUFACTURES IDENTIFICATION ON SOLDER SIDE PER IPC-6011 AND IPC-6012.
 10. TOLERANCE ON ALL DRILL HOLES SHALL BE IAW IPC-D-2221 & 2222 UNLESS OTHERWISE SPECIFIED.

APPROVAL	DATE	BY
APPROVAL	DATE	BY
APPROVAL	DATE	BY
APPROVAL	DATE	BY
APPROVAL	DATE	BY
APPROVAL	DATE	BY
APPROVAL	DATE	BY
APPROVAL	DATE	BY
APPROVAL	DATE	BY
APPROVAL	DATE	BY

PART TO BE MADE BY NAME AND PHONE NUMBER CUSTOMER'S NAME AND PHONE NUMBER ADDRESS CITY STATE ZIP COUNTRY		ORDER NO. DATE OF ORDER QUANTITY PRICE TERMS PAYMENT DELIVERY COMMENTS		intersil PRINTED WIRING BOARD, EVAL- ISL85033EVAL1Z DATE: 2/1 REV: B SHEET: 1 OF 1	
--	--	---	--	--	--