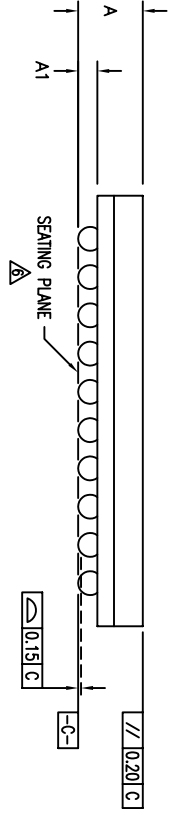
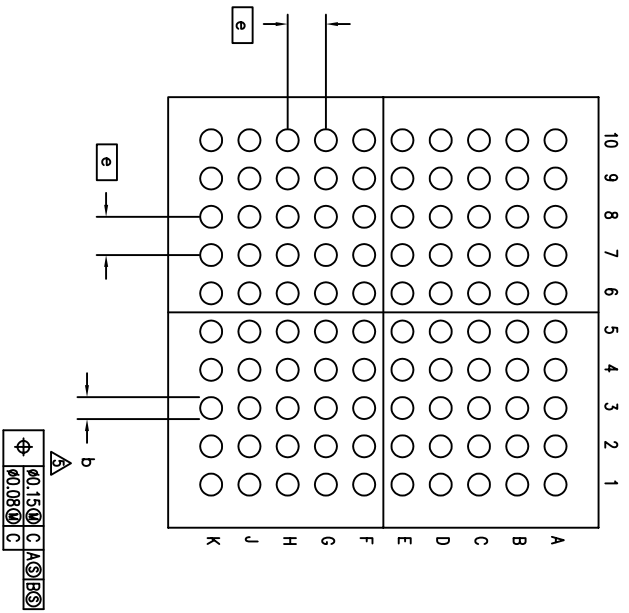
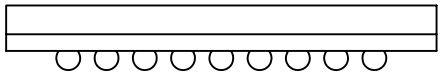
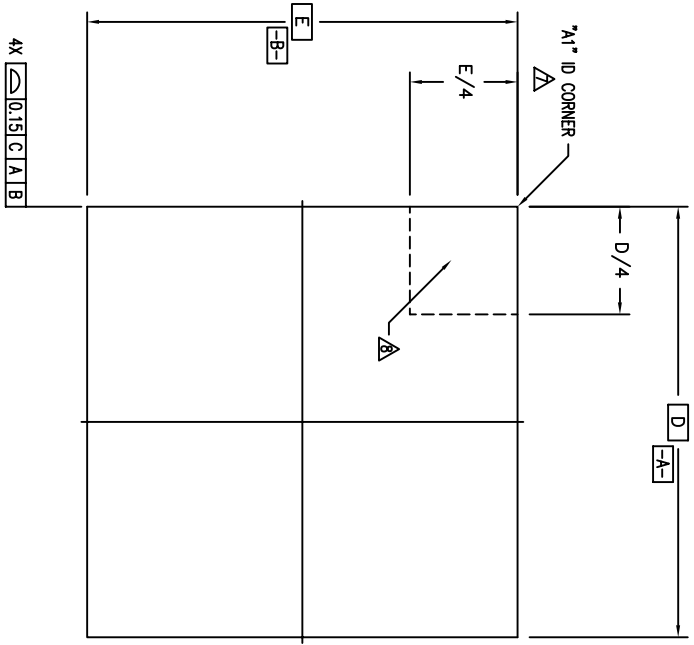


REVISIONS			
REV	DESCRIPTION	DATE	APPROVED
00	INITIAL RELEASE	10/06/09	PKP
01	COMBINE POD & LAND PATTERN	5/23/13	KS

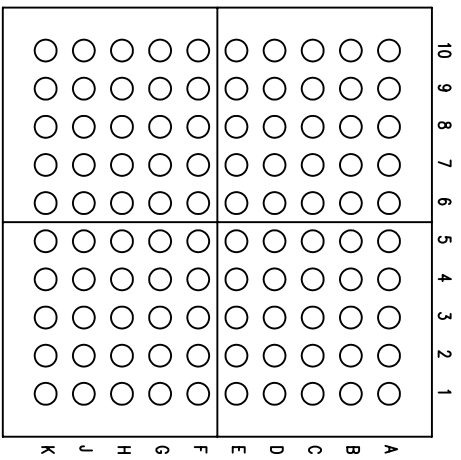


TOLERANCES UNLESS SPECIFIED		DECIMAL ANGULAR	
XXX.X	±	XXX.X	±
XXXX.X		XXXX.X	
APPROVALS	DATE	TITLE	SIZE
DRAWN 979	06/20/09	AB/ABG100 PACKAGE OUTLINE	C
CHECKED		FPBGA	DRAWING No.
		9.0 X 9.0 mm BODY	PSC-4282
			REV
			01
DO NOT SCALE DRAWING			SHEET 1 OF 3



 6024 Silver Creek Valley Road
 San Jose, CA 95138
 PHONE: (408) 248-8333
 FAX: (408) 248-8591
www.IDT.com

REVISIONS			
REV	DESCRIPTION	DATE	APPROVED
00	INITIAL RELEASE	10/06/09	PKP
01	COMBINE POB & LAND PATTERN	5/23/13	KS



(100 BALLS)

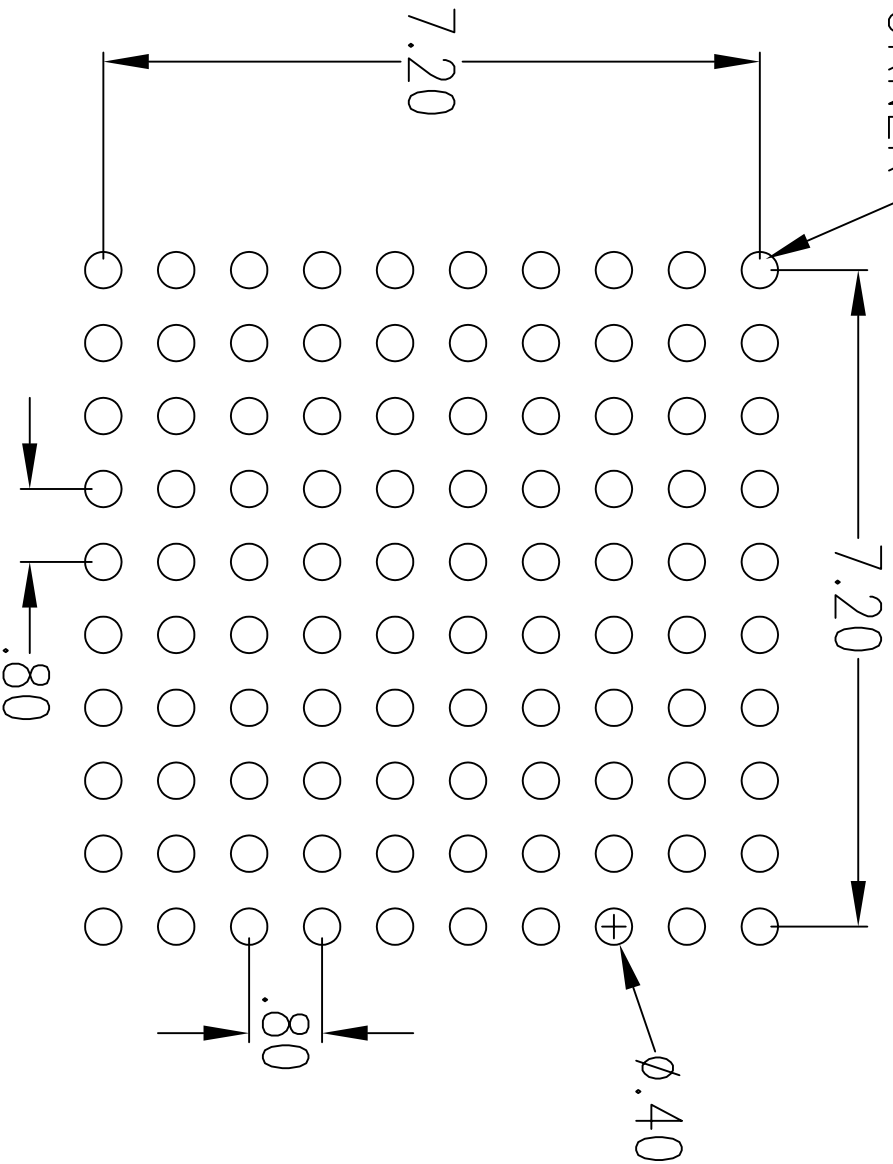
NOTES:

- 1 ALL DIMENSIONING AND TOLERANCING CONFORM TO ANSI Y14.5M-1982
 - 2 "e" REPRESENTS THE BASIC SOLDER BALL GRID PITCH
 - 3 "N" REPRESENTS THE MAXIMUM SOLDER BALL MATRIX SIZE
 - 4 "N" REPRESENTS THE BALLCOUNT NUMBER
- △ DIMENSION "b" IS MEASURED AT THE MAXIMUM SOLDER BALL DIAMETER, PARALLEL TO PRIMARY DATUM $\boxed{-C-}$
- △ SEATING PLANE AND PRIMARY DATUM $\boxed{-C-}$ ARE DEFINED BY THE SPHERICAL CROWNS OF THE SOLDER BALLS
- △ "A1" ID CORNER MUST BE IDENTIFIED BY CHAMFER, INK MARK, METALIZED MARKING, INDENTATION OR OTHER FEATURE ON PACKAGE BODY
- △ IF "A1" ID CORNER IS ON PACKAGE BODY, IT MUST BE LOCATED WITHIN THE ZONE INDICATED
- 9 ALL DIMENSIONS ARE IN MILLIMETERS

SYMBOL	JEDEC VARIATION			NOTE
	MO-205			
	MIN	NOM	MAX	
A	1.30	1.40	1.70	
A1	0.25	0.40	0.45	
D	9.00 BSC			
E	9.00 BSC			
M	10 X 10			3
N	100			4
e	0.80 BSC			
b	.40	.45	.50	5
CENTER BALL MATRIX	N/A			


TOLERANCES UNLESS SPECIFIED		6024 Silver Creek Valley Road	
DECIMAL	ANGULAR	San Jose, CA 95138	
XXX.X	Z	PHONE: (408) 248-3333	
XXXX.X		WWW.IDT.COM	
XXXX.X		FAX: (408) 248-8991	
APPROVALS	DATE	TITLE	
DRAWN 372	06/20/09	AB/ABG100 PACKAGE OUTLINE	
CHECKED		9.0 X 9.0 mm BODY	
		FPBGA	
SIZE	DRAWING No.	PSC-4282	REV
C			01
DO NOT SCALE DRAWING			SHEET 2 OF 3

"A1" ID CORNER



RECOMMENDED LAND PATTERN DIMENSION (mm)

REVISIONS			
REV	DESCRIPTION	DATE	APPROVED
00	INITIAL RELEASE	10/06/09	PKP
01	COMBINE POD & LAND PATTERN	5/23/13	KS

TOLERANCES UNLESS SPECIFIED		 6024 Silver Creek Valley Rd San Jose, CA 95138 PHONE: (408) 294-8200 FAX: (408) 294-3572
DECIMAL	ANGULAR	
XX± 0.05	±	
XXXX±		
XXXX±		
APPROVALS	DATE	TITLE AB/ABG100 PACKAGE OUTLINE
DRAWN 57J	06/29/09	9.0 x 9.0 mm BODY
CHECKED		FPBGA
SIZE	DRAWING No.	REV
C	PSC-4282	01
DO NOT SCALE DRAWING		
SHEET 3 OF 3		