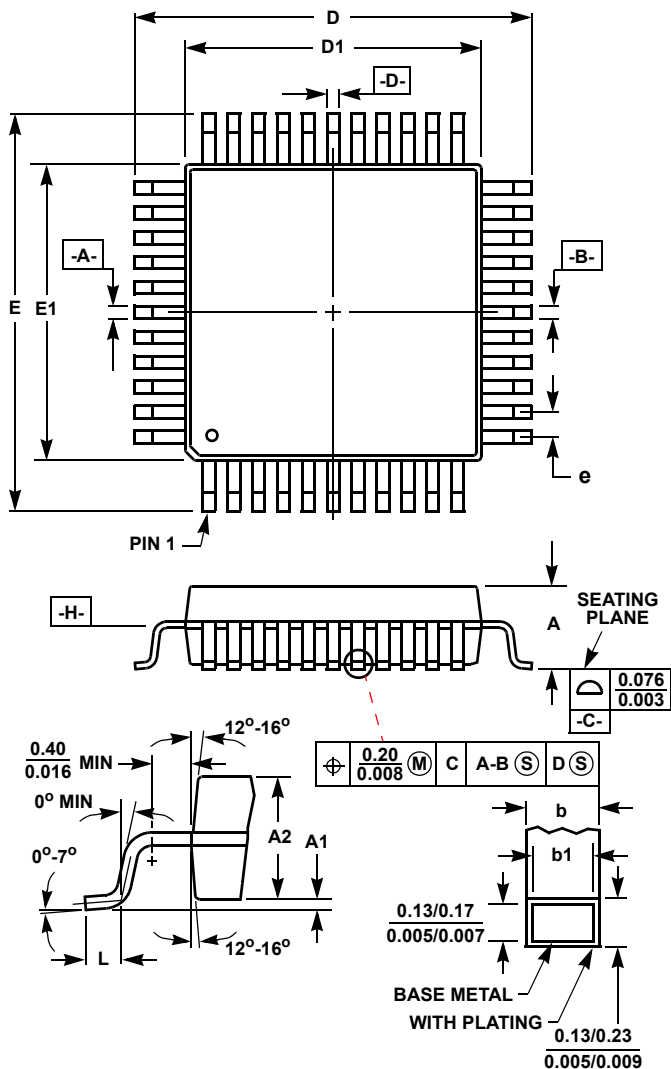


Plastic Packages for Integrated Circuits

Metric Plastic Quad Flatpack Packages (MQFP)



Q100.14x20 (JEDEC MS-022GC-1 ISSUE B)
100 LEAD METRIC PLASTIC QUAD FLATPACK PACKAGE

| SYMBOL | INCHES | | MILLIMETERS | | NOTES |
|--------|-----------|-------|-------------|-------|-------|
| | MIN | MAX | MIN | MAX | |
| A | - | 0.134 | - | 3.40 | - |
| A1 | 0.010 | - | 0.25 | - | - |
| A2 | 0.101 | 0.113 | 2.57 | 2.87 | - |
| b | 0.009 | 0.015 | 0.22 | 0.38 | 6 |
| b1 | 0.009 | 0.013 | 0.22 | 0.33 | - |
| D | 0.908 | 0.918 | 23.08 | 23.32 | 3 |
| D1 | 0.782 | 0.792 | 19.88 | 20.12 | 4, 5 |
| E | 0.673 | 0.681 | 17.10 | 17.30 | 3 |
| E1 | 0.547 | 0.555 | 13.90 | 14.10 | 4, 5 |
| L | 0.029 | 0.040 | 0.73 | 1.03 | - |
| N | 100 | | 100 | | 7 |
| e | 0.026 BSC | | 0.65 BSC | | - |
| ND | 30 | | 30 | | - |
| NE | 20 | | 20 | | - |

Rev. 1 4/99

NOTES:

- Controlling dimension: MILLIMETER. Converted inch dimensions are not necessarily exact.
- All dimensions and tolerances per ANSI Y14.5M-1982.
- Dimensions D and E to be determined at seating plane [-C-].
- Dimensions D1 and E1 to be determined at datum plane [-H-].
- Dimensions D1 and E1 do not include mold protrusion. Allowable protrusion is 0.25mm (0.010 inch) per side.
- Dimension b does not include dambar protrusion. Allowable dambar protrusion shall be 0.08mm (0.003 inch) total.
- "N" is the number of terminal positions.