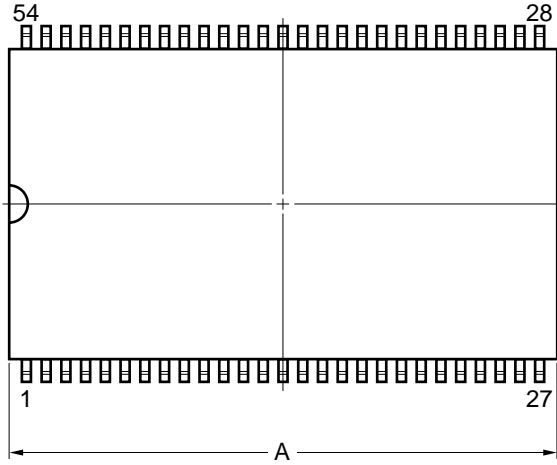
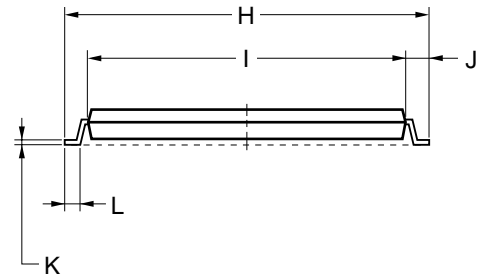
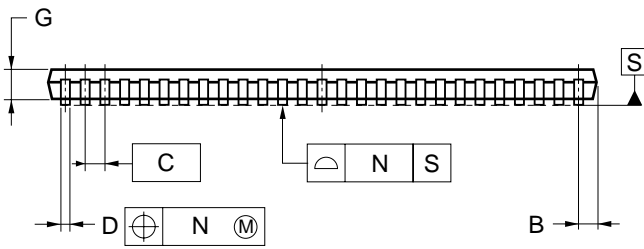
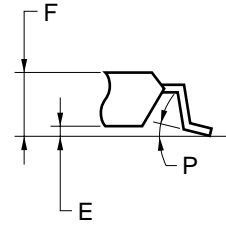


# 54-PIN PLASTIC TSOP(II) (12.70 mm (500))



detail of lead end



**NOTE**

Each lead centerline is located within 0.13 mm of its true position (T.P.) at maximum material condition.

ITEM	MILLIMETERS
A	22.66 MAX.
B	0.96 MAX.
C	0.8 (T.P.)
D	0.30±0.10
E	0.05±0.05
F	1.1 MAX.
G	0.97
H	14.3±0.2
I	12.7±0.1
J	0.8±0.2
K	0.125 <sup>+0.10</sup> <sub>-0.05</sub>
L	0.5±0.1
M	0.13
N	0.10
P	3 <sup>°</sup> <sub>-3</sub> <sup>7</sup> <sub>°</sub>

S54G7-80-7JF-1