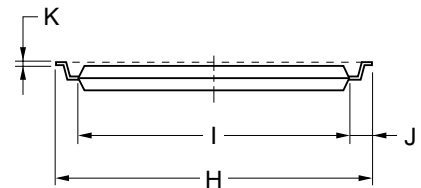
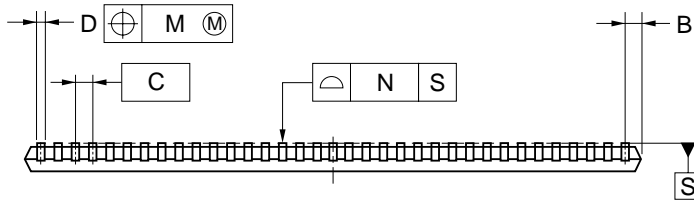
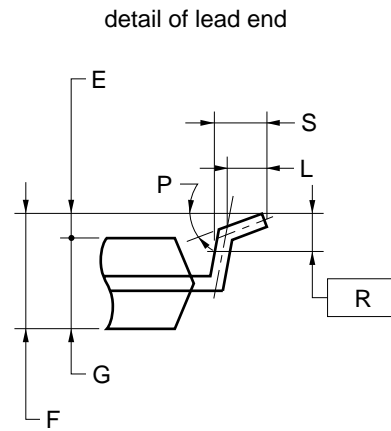
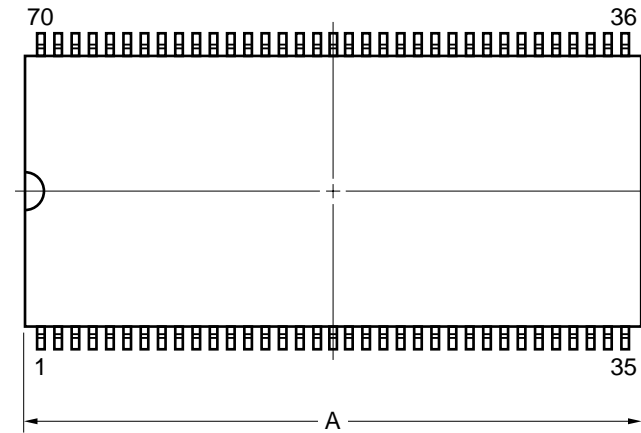


# 70-PIN PLASTIC TSOP(II) (10.16 mm (400))



## NOTES

1. Each lead centerline is located within 0.10 mm of its true position (T.P.) at maximum material condition.
2. "A" excludes mold flash. (Includes mold flash : 24.29mm MAX.)

ITEM	MILLIMETERS
A	23.45±0.10
B	0.85 MAX.
C	0.65 (T.P.)
D	0.24 <sup>+0.08</sup> <sub>-0.07</sub>
E	0.1±0.05
F	1.2 MAX.
G	0.97±0.08
H	11.76±0.2
I	10.16±0.1
J	0.8±0.2
K	0.145 <sup>+0.025</sup> <sub>-0.015</sub>
L	0.5
M	0.10
N	0.10
P	3° <sup>+5°</sup> <sub>-3°</sub>
R	0.25
S	0.60±0.15

S70G5-65-7KG1-1