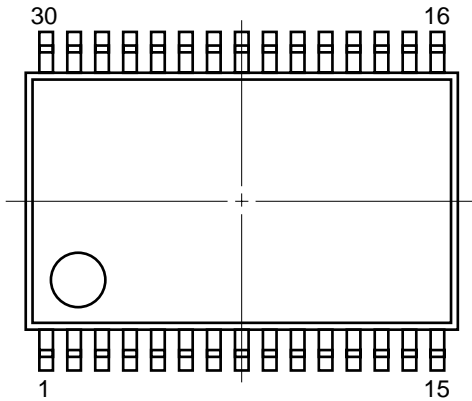
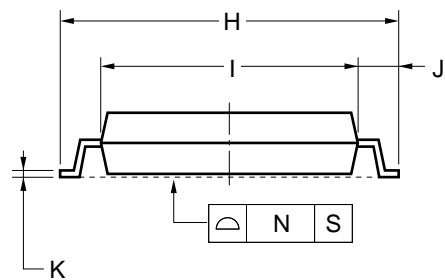
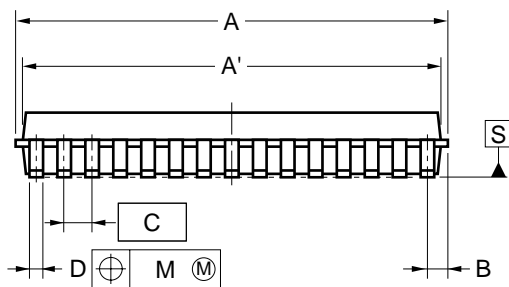
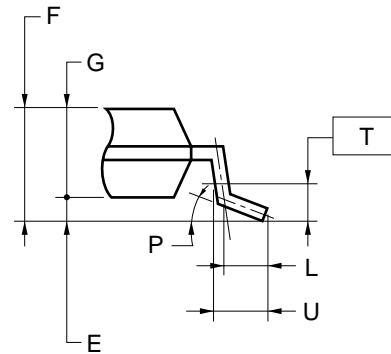


30-PIN PLASTIC TSSOP (7.62mm(300))



detail of lead end



NOTE

Each lead centerline is located within 0.10 mm of its true position (T.P.) at maximum material condition.

| ITEM | MILLIMETERS |
|------|----------------------------------|
| A | 9.85±0.10 |
| A' | 9.7±0.1 |
| B | 0.375 |
| C | 0.65 (T.P.) |
| D | 0.24±0.05 |
| E | 0.1±0.05 |
| F | 1.2 MAX. |
| G | 1.0±0.05 |
| H | 8.1±0.1 |
| I | 6.1±0.1 |
| J | 1.0±0.1 |
| K | 0.145±0.025 |
| L | 0.5 |
| M | 0.10 |
| N | 0.10 |
| P | 3° ^{+5°} _{-3°} |
| T | 0.25 |
| U | 0.6±0.15 |

S30MC-65-6A4