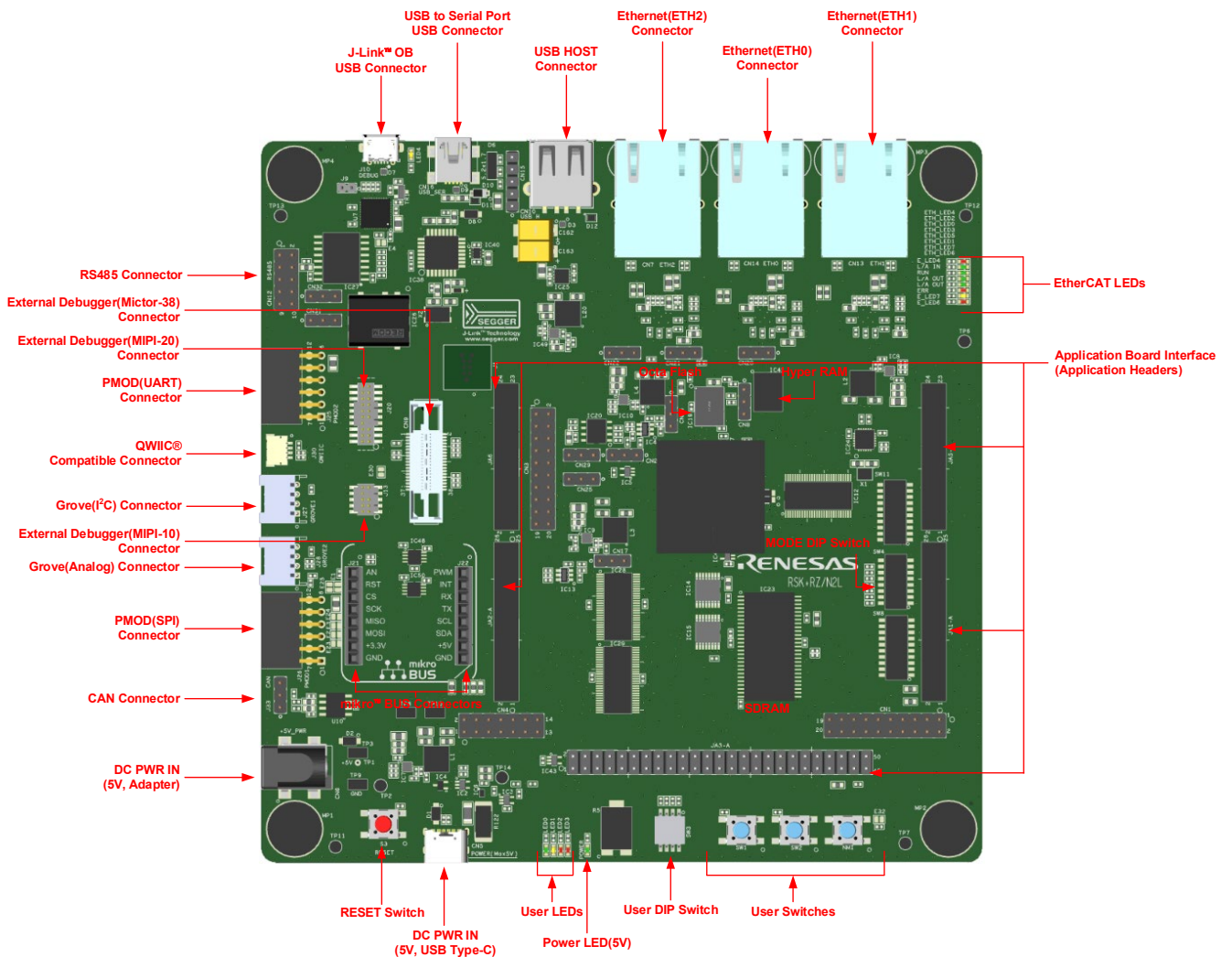


# Quick Start Guide Renesas Starter Kit+ for RZ/N2L



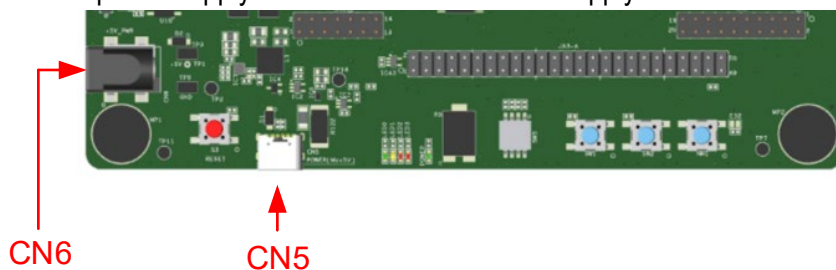
## 1. Connection

Supply power to the CPU board. The sample code is written to the CPU board at the time of shipment. When power is supplied, the program that blinks the User LEDs are executed.

### 1. Supply power to the CPU board.

This board has a USB Type-C connector (CN5) and an optional centre positive supply connector using a 2.0mm barrel power jack (CN6). Supply power to the CPU board from either CN5 or CN6.

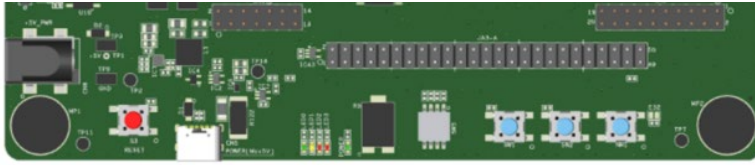
The main power supply connected to CN6 should supply a minimum of 15W to ensure full functionality.



Connector	Supply voltage
CN5	Type-C VBUS (5VDC)
CN6	Input 5VDC

\* USB cable Type C (USB C to USB C) is included with the product.

2. After power is supplied, the User LEDs will blink.



↑  
User LEDs

## 2. Next Step

The user's manual and schematic of this RSK+ are available on the following website. The development environment, sample code, and application notes are also available for download.

<https://www.renesas.com/rskrzn2l>



## 3. Support

Technical Contact Details

Global & Japan: <https://www.renesas.com/support/contact.html>

General information on Renesas microprocessors can be found on the Renesas website at:

<https://www.renesas.com/>

© 2022 Renesas Electronics Europe GmbH. All rights reserved

© 2022 Renesas Electronics Corporation. All rights reserved.

Website: <https://www.renesas.com/>

D017894\_11\_S01\_V02

R20UT4986EG0200

Jul.4.22